



California WATERCOLOR Association

October 2011

P.O. Box 4631
Walnut Creek, CA 94596

www.californiawatercolor.org
email: info@californiawatercolor.org

contents

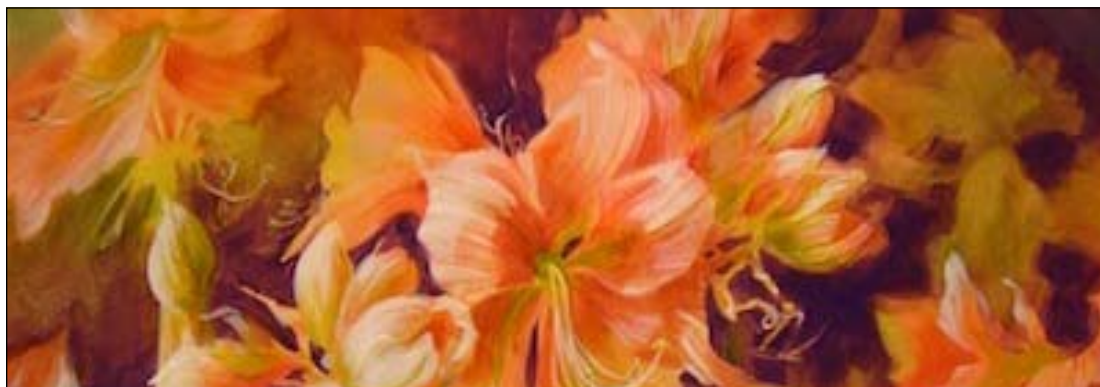
- 2** From the President
- 3** CWA Workshops
- 4** Member News, Show News
- 5** Workshop Corner Show News Notes & Announcements
- 6-7** 42nd Update
- 8** Directors, Committees, Staff, Plein Air Corner
- 9** Outreach News, Sponsorships
- 10** Calendar

Join Us At The Next Paint Out October 15 at Viansa Winery

For details, go to:
www.californiawatercolor.org
on the calendar page.

General Meeting • 7:30 pm, Wednesday, October 19, 2011 • Shadelands Center, 111 N. Wiget Lane, Walnut Creek, CA

October Demo Artist Kathleen Conover



With a unique vision and innovative approaches to water media painting, our October guest artist Kathleen Conover, has garnered a number of prestigious awards, in addition to teaching workshops, being a juror, and lecturing across the country, while her travels around the world continue to enrich and inspire her work. Kathleen is a Signature Member of the American Watercolor Society (AWS), National Watercolor Society (NWS), International Society of Experimental Artists (ISEA) – Master Status, and the Transparent Watercolor Society of America (TWSA) – Master Status. She has been invited and juried into many top national and regional exhibitions, and has received awards from the American Watercolor Society, the International Society of Experimental Artists, the Transparent Watercolor Society of America, the Audubon Artists 50th Annual Exhibition, and the National Collage Society.

Check out the fall issue of Watercolor Magazine, available September 20, for an article on Kathleen's work and there will be a feature article on her in the Feb. 2012 issue of Watercolor Artist magazine. Kathleen has also been included in several books and publications, including "Creative Watercolor Workshop" by Mark Mehaffey, "Watercolor Expressions" by Betty Lou Schlemm, "The Best of Watercolor 2" by Betty Lou Schlemm, and "Creative Watercolor: Step-by-Step Guide and Showcase" by Mary Ann Beckwith.

Painting has been the focus of Kathleen's life ever since she was given a set of paints and won her first award in a regional school competition. This interest was supported by her exposure to an art-rich environment and being surrounded by working artists, nationally acclaimed instructors and a strong "California School of Art" style of contemporary painting during her growing up years in Southern California. She then studied fine arts at San Diego State University and the University of Washington and earned her Master of Arts degree at Northern Michigan University. Although experienced in printmaking, textiles, and metal smithing, Kathleen has focused her life's work on the challenge of watercolor media.

For over 30 years, Kathleen has lived in Marquette near Lake Superior in Michigan's Upper Peninsula, which has enabled

her to have "an intimate relationship with a dramatic nature: it's severity and beauty, it's abstract forms and concepts and it's natural complexities." Inspired by this relationship, Kathleen has developed her signature techniques: "Chaos to order," "Frozen Ice Crystal Paintings," and "Symbolism." For a full description of these, check out her website at www.kathleenconover.com. Brief descriptions follow. "Chaos to Order" is her most commonly-used approach to painting. Working spontaneously, intuitively and without expectations, she combines color and gestural mark making to begin the layering process of her paintings. She then brings order, working back into the layers, interlacing a planned compositional under structure, and introducing imagery, until the painting is complete.

"Frozen Ice Crystal Paintings" is a process in which Kathleen freezes her watercolors in winter to see what she can "catch." This process is her most recognized "signature technique." She mixes the pigments inside, takes them outside in sub-freezing winter air, pours water on her paper, and pours the pigment into the water. The resulting frozen water and pigments form intricate crystallized patterns which Kathleen then develops with details and composition into a final form.

Kathleen states that her most significant signature element is "deep symbolism." For example, the frozen surface of a winter pond reveals multiple layers of ice patterns, trapped leaves, air-bubbles, and the dark water below speaks of the layered depth of a person. Looking through layers of ice is like looking into ourselves. The surface layer is easily recognized and understood. However, deeper exploration is needed to reveal the complex and veiled richness of the wonders within.

Do plan to join us for Kathleen's demonstration at the October meeting; with her innovative and signature approaches to her art, and increasing success and recognition, her instruction should be quite informative.



newsletter deadline info

The deadline for placing items in the newsletter is the 15th of each month prior to publication.

Send articles and photos by disk, email, fax or in writing to:

Patricia Rosa

newsletter@californiawatercolor.org

5499 Wilke Dr.

Concord, CA 94521

Ph: 925.672.3052

eFax: 413 375.1851

membership/ data manager

Mail all changes of address, phone number and email to:

Anne Jacobson

cwa.data@gmail.com

c/o CWA P.O. Box 4631

Walnut Creek, CA 94596

monthly meetings

Meetings are held the third Wednesday of each month (except June and December) at 7:30 pm,

Shadelands Center

111 N. Wiget Lane

Walnut Creek, CA

(NW corner of Wiget Lane and

Ygnacio Valley Road).

cwa workshop info

Wendy Oliver

925.280.1944

Susan Lenoir

925.482.4900

June Hunt

510.525.0965

cwa gallery

Gallery Concord

1765 Galindo

Concord, CA

925.691.6140

Hours:

Thursday -Sunday, 11:00 - 4:00 pm

Free parking behind the Gallery,
accessible only from Clayton Road

(just west of Galindo)

www.galleryconcord.com

e-newsletter info

To receive this newsletter electronically (and in color) please send a note to our Data Manager with the email address at which you wish to receive the newsletter. You will then no longer receive it on paper in the mail, but will receive it via email.

from the president

Another Exhibition is Launched

September 14, 2011

Last Wednesday night my wife and I attended the VIP reception for CWA's 42nd National exhibition. It looked great. I had seen the gallery at the Marin Art and Garden Center a number of times and wasn't sure it could hold 100 paintings. But the Marin Society of Artists were able to fit them all in without making the show look crowded.



Bruce Stangeland by Leslie Wilson

The sun was still shining when we arrived so we had a chance to enjoy the beautiful gardens, fountain, gazebo and octagonal house, all of which I've painted in the past during a plein air class. The crickets were in fine voice.

Chris Kelley, the CEO of the Marin Art and Garden Center, likes parties, and decided that would be a good way to launch the exhibition. I found him to be a gracious host and a hard worker. After the event I found him outside putting away tables. I kidded him about it. He felt that somebody had to clean up, so why not him.

Chris gave a short speech welcoming CWA to the gallery and told us a little about the history of the Marin Art and Garden Center. Then I got to thank them for their hospitality and told them something of the history of CWA and its mission. Eileen Libby then thanked all the people who helped with the 42nd National Exhibition, both from CWA and also from MAGC and MSA. She seemed relieved to have the exhibition finally hung and underway.

We had a good turnout for this reception and a delightful pianist whose music added to the festive mood. I was pleased to see a number of old friends and two former colleagues from work. I had a chance to talk with a number of the artists and attendees. I even met a banjo-ukulele player.

Anne Jacobson came up to me and asked if I had gotten any response to my request for volunteers or for members of a nominating committee. I had to say I still needed help. She said, "Well, I can do it then". I was delighted, and asked her to think about who would be good to complete the three-person committee. Less than an hour later, she came back to me and said Eileen Libby and David Savellano had agreed to join her on the committee. Great news. Nothing beats networking while enjoying good food, wine, and conversation at a reception.

Our nominating committee will be putting together a list of candidates for our board for 2012. We will vote on their recommendations at our November General Meeting. So, please contact them soon with your thoughts and suggestions.

Oh, one more thing. Samantha McNally, who was running our credit card machine, reported the sale of a painting. It was Jerry Stitt's "Corinthian Yacht Club".

*Cheers,
Bruce Stangeland*

workshop corner

Kathleen Conover "Chaos to Order"

October 17 - 21 (All levels)

About her workshop, Kathleen says the following: This week's focus is on strengthening your compositional skills from wherever you are in painting experience. You will bring your paintings from colorful and textured "chaos" to "order" with good design (see definitions below). I teach with daily demonstrations, lead you through design-strengthening exercises and share new painting techniques (including gesso and acrylic mediums). You will work independently each day and have some fun, too. Goals: Understand and implement Design Principles and Elements; create strong compositions and designs; and paint from a plan (your design) and without a plan (intuitively).



Kathleen's passions cover a range of subject matter, as shown by the four series on her website: "Life Cycles" utilizes floral images to express cycles of life, death, and life; "The Industrial Evolution" series is about the changes America is undergoing in its struggling technological and manufacturing industries and is inspired by travels throughout the U.S., but, most specifically, by the Marquette, Michigan iron ore docks (one of these paintings has been selected by AWS for its traveling exhibition currently touring the US); "Frozen Crystal" series interprets nature using frozen paint crystals; and "Contemporary Design" series of abstracts inspired by interactions with the environment.

Kathleen provides the following definitions related to her workshop: **Chaos-** is the exciting and/or interesting, often confusing, beginning of a painting that captures a particular mood, energy, inspiration, texture or other "magic" that is difficult to introduce in your work at a later stage of development.

Order- transforms the chaos of a great "start" into a successful painting through the use of Design Principles and Elements.



Personal Imagery/ Style-is often defined:

1. MARKS: repeated strokes, colors, shapes
2. SYMBOLS: objects of meaning, recurring attractions, dreams. Images with meaning become your symbols and can develop into series of unique work.
3. CONTENT is what your "person" brings to the subject.



\$395 for CWA members.



Registration is still available for this last workshop of 2011!



2012 Workshops

Linda Sutton, March 19-21

Ric Dentinger April 16-20

Mark Mehaffey May 14-18

David Lobenberg June 16-17

Kathleen Alexander September 17-21

**ALAMEDA
FREE LIBRARY
"New Works Exhibit"
Reception**

1550 Oak Street
Alameda, CA
(510) 747-7777
Wed., October 12, 2011
6:00pm - 8:00pm
(Wine Served)

member news

Francesca Brayton's painting "Crab Cooker" is in Splash 12: Artistic Vision (now available); "NYC MoMA" is in Richeson 75 International Landscape 2011 (now available); "Big Corona" and "Crystal Cove Hill" are in the City of Brea's Plein Air Invitational Exhibition August-September, 2011; "Birthday Flowers" accepted into Watercolor West October - December 2011.

Jean Pederson has an article on perspective in the August issue of Watercolor Artist. Kimberley's art complex Centre 64 will present traveling exhibition "Farm Fragments". The installation will run in British Columbia from September 1-October 29, 2011. Jean Pederson collected various parts of her family's farm- old receipts, and photographs (both historical and contemporary) – in an attempt to tell the story of the ever-changing landscape and social fabric of the prairies. This artistic journey took her outside of her traditional practice, supplementing it with mixed media assemblages, and installations. The group of work pays tribute to all of those who built the social and economic foundations for the Canadian Prairies. www.kimberleyarts.com.

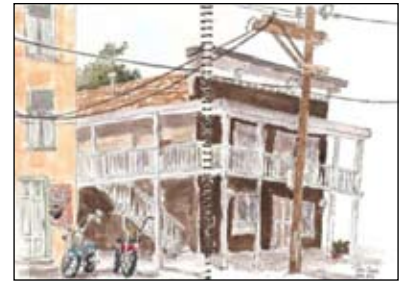


Lost by David Peterson

Associate Member David Peterson, of Sacramento, was awarded 2nd Place at Watercolor Artists of Sonoma County "Aquaareas" Open Exhibit. Judge Manette Fairmont picked "Lost", a Midtown Sacramento plein air work for the honor. www.aquarellist.com.

Look for **Juanita Hagberg** in Watercolor Magazine's October 2011 issue. The "Letters to the Editor" column is exclusively devoted to favorable comments about Juanita Hagberg's article in the June issue. Her article, "The Doctor is In" will appear in "Studio Staples" in the December 2011 Watercolor Artist Magazine. In it, Juanita tests and reports on Daniel Smith's Watercolor Ground.

Beth Bourland is a CWA member and a Alameda resident. She is an avid sketcher, and posts 2 or 3 sketches weekly on her blog. Beth writes: "Sketching is my daily journal, a way of observing and appreciating moments, working out ideas, and being present." Check out her Blog at <http://bethbourland.wordpress.com>. Beth's posts include sketches, before-and-after views of painting projects; plus challenges, humor, successes, and of course, a few klunkers. The blog is mostly image-driven, with very brief text. Save the link on your Favorites; subscribe; or check in occasionally whenever you feel like it! Beth is a member of CWA and East Bay Plein Air Painters.



Port Costa Double by Beth Bourland

Terri Hill, well-known for her paintings of bikes, is having another exhibition featuring many of her two-wheeled traveling machines, October 3-30, at Viewpoints Gallery in Los Altos. Artist's reception is on Friday evening, October 14. There will also be a special appearance of hand-built, custom bikes using recycled parts at the reception. www.designerhill.com. Viewpoints Gallery, 315 State Street, Los Altos, CA 94022. 650-941-5789.

Pat Dispenziere's watercolor "Tallinn" has been juried by Don Andrews into the Kentucky Watercolor Society's 34th Annual National show. The show will be held at the Actors Theatre of Louisville, Louisville, Kentucky, September 27-October 29, 2011. Pat's watercolor "Bishop's Chair" has been juried by Frank Webb into the Kansas Watercolor Society's National Exhibition 2011 to be held at The Wichita Center For the Arts, Wichita, Kansas, November 18-December 29, 2011.

Several of **Samantha McNally's** paintings will be featured in the Brown Couch Café in Oakland in October. 340 14th St (between Harrison Street and Webster Street) Oakland, CA, 510-452-1664. The reception is on October 7 from 7:00pm-9:00pm.

show news

Call for Entries— Yosemite Renaissance XXVII

Deadline: November 10, 2011

Yosemite Renaissance is an annual juried competition/exhibition intended to encourage diverse artistic interpretations of Yosemite. Historically, the arts have played a very important role in the establishment of our State and National Parks. It is our hope that they can be just as important in future efforts to preserve and protect that heritage. Entries should be recent works of the landscape, environment, wildlife, and people of Yosemite or the Sierra Nevada. Both representational and non-representational

submissions are accepted. Entries may be in any fine art medium including painting, photography, drawing, printmaking, textile and sculpture. Entries in the form of digital files are due by November 10, 2011. The entry fee is \$15 per entry. Artists may submit up to eight entries each. 30 to 45 pieces will be selected for the exhibition. Cash awards of at least \$4,000. Possible purchase awards.

"With You in Mind"...

you are invited by The Fairmont Gallery, The Wine Country Plein Air Invitational Gallery Exhibition 2011 Exhibition continues until October 17, 2011. Original paintings of both plein air and studio works by 15 of the top nationally renowned "Sonoma/California" plein air artists, painting landscapes in the plein

air tradition. Their inspiration will be the autumn colors of Sonoma landscapes during the harvest season. This is exclusively a gallery exhibition only. Artists will paint original paintings in oil, pastel or watercolor on location. Exhibition includes, for the Collector's pleasure, special studio paintings by the artists. Featured Artists: Michael Obermeyer, Jim McVicker, Stock Schlueter, Laurie Kersey, Douglas Morgan, Carolyn Lord, Kim Lordier, Manette Fairmont, John Poon, Francine Hurd, Tom Solteszy, Dick Cole, Sally Cataldo, Robin Purcell, Michelle Usibelli. Hosted and Curated by the Fairmont Gallery, 447 First Street West, Sonoma, CA, on the historic Plaza. Info at www.fairmontgallery.com or 707-996-2667.

continued on page 5

workshop corner workshops by members and others

Sketchbooking with Watercolor and Collage at the Pleasanton Art League

November 2-4, 9:30-4:30, Firehouse Arts Center, 4444 Railroad Ave., Pleasanton, CA. \$225. Using pen, watercolors, collage and personal stamps create your own captivating color sketchbook, discovering a new way to relate visual experience and record it with your personal reactions. Contact Lsbeach@comcast.net, 925-449-4226 or go to www.pal-art.com.

Susan Cornelis Workshops

The Muse Group: Painting Lab for Creative Expansion, Sebastopol, CA.

8 - Week Tuesday Group

starting September 27, 1:30-4:30 weekly

6 - Month Saturday or Sunday Groups

starting October 1 - 2, 10-2:30 monthly

\$240 for a series

Learn to paint intuitively in the playful format of art journaling. Features a different mixed media painting technique in each session.

Watercolor Paint-Away in Provence with Sonja Hamilton, SWA

June 24-July 1, 2012. Visit, paint, sketch, photograph beautiful Provence during the lavender bloom, Roussillon (home to ochre pigment), St. Remy, Gordes and more. Our restored farmhouse/hotel, with a view of the mountains, is situated in the heart of Provence, France, but is quiet, quaint, cozy and lovely with its blue doors and comfy patio. Discount if deposited before November 30, 2011. Open to only 7 participants. This is Sonja's 5th tour

with French Escapade and knows this will also be a winner! For more information:

www.frenchescapade.com

www.sonjahamilton.com

sonjaswa@aol.com

frenchescapade@yahoo.com

Painting the Still Life Oil Painting Workshop with Michael Siegel

October 14 - 16, 2011

Known for his still-life, portraiture, and figure painting, Michael uses a dramatic "light-and-shadow" approach to create powerful and moving paintings. His work has been featured numerous times in Southwest Art Magazine. Visit his website at: www.siegelfineart.com

Patris Studio at S12, 1200 S Street, Sacramento, CA, 916-397-8958

artist_patris@yahoo.com

Self Portraiture and the Human Face with Daryl Urig

Open Media Exploration

October 17-19, 2011

Nationally Acclaimed oil painter Daryl Urig will provide a unique presentation of rich instruction on the benefits of self-portraiture and describing the human facial features using three different and complimentary approaches. These will benefit the artist in developing a more in-depth portrait. Students will develop preliminary studies and a final self-portrait based on demonstrations, artistic self-exploration and inspiring instruction. We will take a closer look at our self and our work and the things that help communicate

who we are. All mediums welcome.

Patris Studio at S12, 1200 S Street,

Sacramento, CA, 916-397-8958

artist_patris@yahoo.com

Mira White Workshops in October and November:

About GRAPHITE! An Experimental Workshop exploring painting and drawing possibilities with Graphite working with both Dry and Wet Media. Tuition: \$200.

October 29-30, 2011, 10:00am-4:00pm

Lafayette Studio, Plaza Center, Lafayette, CA.

Contact info: miraMwhite@earthlink.net

925-947-5773

Open Studios: Lamorinda Arts Alliance

Featuring Oils, Pastels, Watercolors and Mixed Media, October 22-23, 2011, 11:00am-4:00 pm

Lafayette Gallery, 1008 East St. Mary Blvd, Lafayette, CA; Lafayette Studio Plaza Center, Mt. Diablo Blvd., Lafayette, CA

Encaustic Masters: Inspirational Voices

September 22-October 12, 2011

Columbia River Gallery, Troutdale, OR

September-November 3, 2011

Mendocino Art Center, Mendocino, CA

Experimental Acrylic Painting/Collage

Sebastopol, CA. November 19-20, 10:00am-4:30pm, \$160. Pour, splatter, stamp and layer fluid acrylics, adding textures with acrylic mediums and collage to create uniquely personal art expressions.

Contact susan@imaginewithart.com,

www.imaginewithart.com,

707-824-8163.

Show News continued from page 4

ArtWalk Livermore

10th Anniversary ArtWalk

ArtWalk Livermore brings a celebration of art to downtown Livermore on October 8, 2011, with over 150 artists displaying multiple media in a new, easily walkable format. Event hours are 11:00am-5:00pm, and planned highlights include multiple art demonstrations, a graffiti wall, a figurative exhibition through presented by the Bothwell's Figure Workshop group, and the grand opening of a new gallery in downtown (details to follow). Further info at www.artwalklivermore.org, where participating artist galleries will also be posted by September 18, 2011.

notes & announcements

Congratulations Margaret!

Margaret Washington was inadvertently omitted from last month's listing of new CWA Signature Members.

CWA Workshop The Kathleen Conover Workshop is still not full; so you can still sign up. It is October 17-21. Contact June Hunt to sign up.

CWA Alameda Public Library Show

Enter a CWA show at a new venue to us, the beautiful Library in Alameda.

www.californiawatercolor.org/shows/20111002.pdf

CWA Plein Air Paint Out

Enter the CWA plein air painting contest at the Marin Art and Garden Center.

www.californiawatercolor.org/paintouts/20111001paintout.html

Help Wanted—CWA Budget Director

42nd National Exhibition

Committee Update for October



September 6, 2011 was Installation Day for the 42nd, and after five full hours of lifting and moving, all 101 paintings were hanging in place! Quite a dramatic sight, and a wonderful accomplishment, even with the collapse of one of the large panels at MSA Gallery. Fortunately this happened before paintings were hung, and even more fortunately, with Jim Brainerd, Michael Beaver and Robert B. on hand to fix it! Great thanks to Marge Gray and Melinda Shook for their wall tag hanging, and to Ventena Amico and Pam Leigh, in the crew for Marcia Kent and Judy Samborski's installation expertise.

The Preview Party hosted by Marin Art and Garden Center was a lovely September 7th evening, with a Swing Fever keyboardist providing ambiance for art appreciation. It was wonderful to see the 101 paintings hung to great effect both as individual paintings, and a flowing combination. Jump starting the show was our first sale, *The Corinthian Yacht Club*. Congratulations Jerry Stitt!

Compliments galore keep coming to the fabulous catalog for sale at the MSA Gallery and the MAGC office for interested visitors. However, nothing is perfect, even with multiple proofreading, especially for a publication of this complexity. Please note that the MSA gallery will be open Monday-Friday from 11:00am-4:00pm, during this exhibition, a change from their usual "closed Friday" status. Jo Smith, their manager, has revised their answering machine greeting for the duration of the 42nd.

Special thanks to Karen Gann, Judy Klausenstock, Lynda Moore, and Sue Lyttle for Friday Gallery sitting, and for Sue's special help with signs, great humor, and graphic design.

Outreach assistance appreciation to Demo Artists: Linda Sutton, Julie Cohn, Mary Spivey, David Broad, and David Lobenberg, with assistance from (so far) Barbara Daniell, Charlotte Britton, Marilyn Hill, Mona Rivers-Vazquez, and Michal Weinstein. FROgard Butler and Nan Lovington have been challenged by the beginning of school timing!

Volunteers are still needed for:

Paintings Return Shipping on October 11 and 12, Gallery Concord, 10:00am-3:00pm, let me know at eileenlibby@gmail.com, or 510-237-8181. Outreach Fridays: September 30 and October 7 for morning and afternoon session assistance. Contact FROgard Butler at frogard2000@yahoo.com.

If you missed the Awards Reception on September 18, come see this exhibition before take-down on October 9. There is nothing like being in front of the real paintings!

*Eileen Libby, Director
42nd National Exhibition
California Watercolor Association*



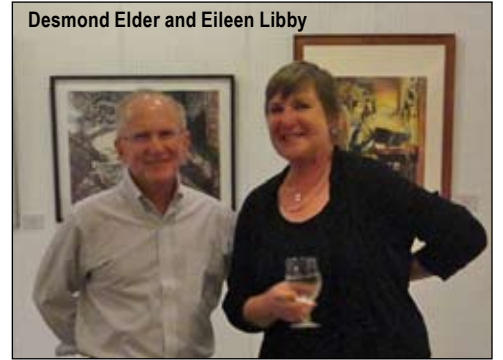
Lucille Rella-Clohessy, CWA

We are honored to acknowledge Lucille Rella-Clohessy, CWA as a Signature Member of the California Watercolor Association. In spite of our best efforts, the image of her alternate entry was printed in error in the catalog for our 42nd National Exhibition. CWA has apologized to the artist and regrets this error. "Woman of Kalaw" pictured left, is the correct image accepted into the exhibition.

Charlotte and Neal Huntley



Desmond Elder and Eileen Libby



Bruce Stangeland, Dave Benoit, and Chris Kelley, the CEO of MAGC

Swing Fever



Photos by Samantha McNally

board of directors

<i>president</i>	Bruce Stangeland 510.526.9075
<i>vice president</i>	Eileen Libby 510.237.8181
<i>director california exhibits</i>	Lynda Moore 415.454.4027
<i>director of programs</i>	Pamela Miller 925.288.9900
<i>secretary</i>	Leslie Wilson 925.935.7529
<i>budget director</i>	Open
<i>director of communications</i>	Samantha McNally 415.828.4991
<i>directors of workshops</i>	Wendy Oliver 925.280.1944
	Susan Lenoir 925.482.4900
	June Hunt 510.525.0965 asst: Alexis Milea
<i>director of outreach</i>	Nan Lovington 925. 930.6503 asst: FROgard Butler
<i>director of membership</i>	Sue Johnston 510.531.5471

volunteer committees

<i>national exhibition</i>	Eileen Libby
<i>gallery concord co-directors</i>	Pablo Villicaña Lara and Carol Jurasin
<i>gallery concord treasurer</i>	Gladys Schaible
<i>gallery concord publicity</i>	Qian Gao
<i>area representatives</i>	Joyce Leopardo*(San Jose) David Broad (San Rafael) Sally Cataldo (Santa Rosa) Carolyn Cappello (Penn Valley) Gary Foll (Oregon) James Gleeson (San Francisco) Donna Gamel (Emeryville) Georgia Herrick (Modesto) Alvin Joe (Foster City) Ara Leites (Santa Cruz) Carol Maddox (Pleasanton) David Peterson (Sacramento) Judy Rowe and Carolyn Warm Sun (Oakland) Mary Spivey (Berkeley) Sal Valencia (Pittsburg) Pablo Villicaña Lara (Concord) Betty Turnquist (Walnut Creek) Qian Gao (San Ramon) Myrna Wacknov (Foster City) Ron Ridley (Elk Grove)
<i>community outreach</i>	Carol Smith, Helene Yu-June Rice, Mona Rivers-Vasquez, Jack Gautreaux, Charlotte Huntley
<i>mail distribution</i>	Sue Johnston
<i>hospitality</i>	Phyllis Annee-Wecker, assistant: position open
<i>greeter</i>	Donna Gamel
<i>treasurer assistants</i>	Gladys Schaible, Annette Hodtwalker
<i>video library</i>	Charlotte Morris*, Cathy Riggs*
<i>photographer</i>	Rollando Barrero
<i>panel rental</i>	Barb Bochenek*, Pam Howett
<i>cwa webmaster</i>	Bruce Stangeland

staff

<i>membership/data manager</i>	Anne Jacobson
<i>newsletter editor</i>	Patricia Rosa
<i>accountant</i>	Kathy Vigil
<i>audio/visual set up</i>	Stephen Abst
<i>outreach</i>	FROgard Butler

*Chair of Committee

plein air corner



Paint Out – Lands End

Don't those words bring visions of ocean, cliffs and rugged terrain to your mind? That is what I thought when I looked at the CWA website to find out where we were painting August 20th. Lands End. I told my husband, Don and he jumped at the chance to participate as he did on the Mare Island paint out. I caught BART in Pleasant Hill a little after 8am, got off at Embarcadero, and then caught the MUNI 1. I jumped off at 33rd and Geary, catching the 18 which drops you off right in front of the Legion of Honor. There I was met by Samantha McNally. The first thing she said was "we might be the only ones" since she had not seen anyone else as yet. She had made arrangements with the staff in the Legion of Honor for any CWA painters to use the facilities while we were there. Not a moment later, Sara Kahn joined us...we were three hardy souls braving the cold, wind and fog to paint the glorious scenes before us. We split up to find the subjects that would inspire our artistic talents. As I was sitting on a bench facing the Golden Gate Bridge a van pulled up behind me. I thought it was tourists looking at what I was doing again when I looked up to see Leslie Wilson. She introduced her companion, Sal Valencia. I let them know that we were meeting up at the sculpture in the middle of the circle parking lot at 1pm, and off they went to find their inspiration. By noon Don had arrived by public transportation. He found Leslie, Sara and Samantha but I was no where to be found. He tracked me down by cell phone, and then went on his way with his new device, an Ipad2. He took pictures and videos as he walked along the coastal trail. We met at the parking lot for a brief critique of our work. What different styles we all have. People stopped, looked and offered praise. Sara, Carol, Leslie and Sal painted the bridge. Sal created a cityscape. Samantha, the Legion of Honor and Carol the quest for world peace monument. One of the painters threw out the word "wimps" but we all agreed that this area of San Francisco is both breathtaking and unpredictable. Photos were taken as well as video. Don put together a video which he loaded to his website. You can find a link to it on the CWA Facebook page – www.facebook.com/californiawatercolor. Join us on October 1 at the Marin Art and Garden Center for the annual CWA plein air competition. The next plein air day is on October 15 at Viansa Winery in Sonoma. Details are available on the CWA website: www.californiawatercolor.org. It's fun, friendly and a great way to meet fellow painters and enjoy the world around you.

Carol Husslein

CWA Outreach



Mary Spivey



Photos by FROgard



Julie Cohn

Marin Art and Garden Outreach Event

The children had a blast with Linda Sutton doing the demo. They had a tour of the gallery to view the work before the demo and after the demo another tour to try to see which paintings used salt and which ones has spots on them where the white of the paper was saved. They learned about artist's statements and looked through the binder about the artist and asked many good questions. Ross's Elementary School provided us with a wonderful group of 28 fourth graders. Their teacher was thrilled at the demo and proud of her students work. Fun was had by all.

Marin Art and Garden Friday Demos

I would like to encourage more adults to come out for the "drop in" demos in the pm, starting at 1pm and ending at 2:30. All the Friday demos are free to participants and all materials are supplied courtesy of CWA Outreach. Come join the fun!

www.frogard.wordpress.com

To Volunteer, contact
outreach@californiawatercolor.org

sponsorships

The CWA newsletter is accepting ads from anyone who would like to be a sponsor of CWA. The newsletter is sent out monthly to all of our members. It is a very effective way to reach a large audience of artists. All CWA artists paint with watercolors, but not exclusively. Many members also paint in oils, acrylic and pastels.

We are offering the following sponsor packages that reflect available advertising space. All ads, except Classified, run for a minimum of 3 months and are payable in advance. A 10% discount is available to CWA members, members also get classified ads for free. Deadline for insertion is the 10th of each month prior to publication (ie, February 10 for the March newsletter).

Formats accepted are digital or camera-ready artwork. Images should be scanned at 300 dpi. File format preferred is PDF, but we can accept JPG, TIFF, EPS files. All ads will appear in black and white in the print version, and in color in the email version.

Contact Patricia Rosa at
newsletter@californiawatercolor.org
or (925) 672-3052 for further information.

sponsor levels

Distinguished Donor

Full Page/7.5 x 10
3 months: \$750
12 months: \$3000

Benefactor

Half Page/7.5 x 5
3 months: \$450
12 months: \$1800

Fellowship

Third Page/7.5 x 3.25
3 months: \$360
12 months: \$1440

Patron

Quarter Page/3.75 x 5 (vert)
3 months: \$240
12 months: \$960

Friend

Eighth Page/3.75 x 2.5 (hrz)
3 months: \$180
12 months: \$720

Classified

text only: approximately 400 characters, including spaces. \$50/month (free to CWA members and non-profit organizations)



CALIFORNIA
WATERCOLOR
ASSOCIATION Box 4631 • Walnut Creek, CA 94596-0631

Nonprofit Org.
U.S. Postage
PAID
Concord, CA
Permit No. 720

Return Service Requested

2011 Calendar

MEETINGS & DEMOS

October 19	Kathleen Conover
November 16	Barry Levin
December 3	Holiday Party at Gallery Concord 1pm-3pm

WORKSHOPS

October 17-21	Kathleen Conover
---------------	------------------

MEMBER SHOWS

Alameda Public Library
Reception October 12 6:00 - 8:00pm
Wine Served
Show October 2-29

CWA PLEIN AIR PAINT OUTS

10:00am-1:00pm.
October 15 Viansa Winery
November 19 China Camp
See www.californiawatercolor.org for details.

2012 Calendar

MEETINGS & DEMOS

January 18	TBA
February 15	TBA
March 21	Linda Sutton
April 18	Ric Dentinger
May 16	Mark Mehaffey
June	No Meeting
July 18	TBA
August 15	TBA
September 19	Kathleen Alexander
October 17	TBA
November 21	TBA
December TBD	Holiday Party at Gallery Concord 1pm to 3pm

MEMBER SHOWS

Feb. 25 – Mar. 30	John Muir Medical Center
May 18 – July 5	Gallery at 48 Natoma, Folsom

WORKSHOPS

March 19-21	Linda Sutton
April 16-20	Ric Dentinger
May 14-18	Mark Mehaffey
June 16-17	David Lobenberg
September 17-21	Kathleen Alexander

CWA PLEIN AIR PAINT OUTS

January 14, 1 pm	Planning meeting at Gallery Concord
------------------	--

RSVP to info@californiawatercolor.org
Bring suggestions for places to paint.
*(Required: restrooms and that it be open to the public
on the third Saturday of the month. Bonus: picnic tables.)*

**Plan ahead! Submissions for the
newsletter must be received by the
15th of the month prior to publication!
Send to Patricia Rosa (see page 2).**



Photos of Paint Outs, CWA show winners, & Monthly
Demos are on www.facebook.com/californiawatercolor