



# California WATERCOLOR Association

July 2012

P.O. Box 4631  
Walnut Creek, CA 94596

[www.californiawatercolor.org](http://www.californiawatercolor.org)  
email: [info@californiawatercolor.org](mailto:info@californiawatercolor.org)

**contents**

- 2** From the President
- 3** CWA Workshops
- 4** Member News  
Gallery 48 at Natoma Reception
- 5** Workshop Corner  
Show News
- 6** Directors, Committees, Staff, Outreach Announcements
- 7** Plein Air Corner  
Sponsorships
- 8** Calendar

**Insert**  
43rd National Exhibition Prospectus

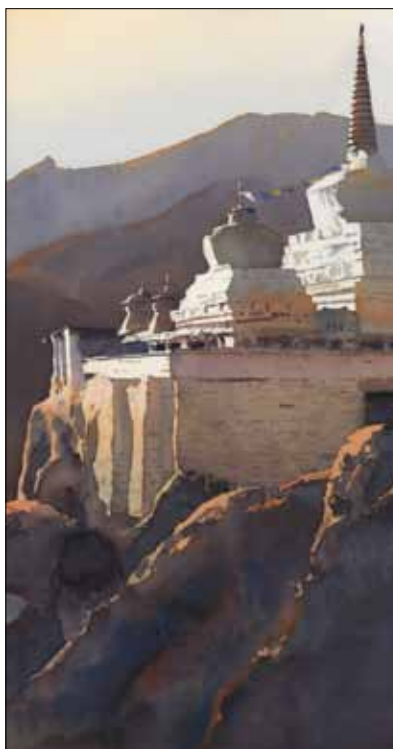
**PLEIN AIR**  
Come paint with us in Crab Cove on July 28

For details, go to:  
[www.californiawatercolor.org](http://www.californiawatercolor.org)  
on the calendar page.

General Meeting • 7:30 pm, Wednesday, July 18, 2012 • Shadelands Center, 111 N. Wiget Lane, Walnut Creek, CA

## July Workshop Instructor Michael Reardon

Michael Reardon, an award-winning watercolorist based in Oakland, is a committed plein air painter who enjoys the unique challenges associated with painting out of doors. And the first thing he does when he comes across a scene that inspires him is to determine how he can use the white of the paper to engage the viewer. A close viewing of his work reveals that Michael's whites are actually subtle shades of white. "The beauty of painting shades of white goes to the heart of my approach to painting in watercolor, capturing the fleeting qualities of light," Michael noted in his interview with Bob Bahr for the spring 2011 issue of *Watercolor Magazine*. And he continued, "Light bouncing off a white object is the clearest example. Keen observation discerns the subtle tints of blue reflected from the sky, warm tones from the ground, greens from adjacent vegetation, or myriad other colors that reflect from the object and affect its 'whiteness.'" His award-winning painting Lamayuru Chorten, Ladakh, of a white sunlit monastery in India is a wonderful example of his use of whites.



Both a plein air and a studio artist, Michael earned a degree in architecture school, then starting doing architectural illustrations in pen and ink for a living, which he has now done for over thirty-two years. He is an avid traveller and finds great inspiration to create in landscapes and architecture from around the world. Using his extensive background in architecture and illustration, Michael composes convincing and evocative watercolors. He begins his paintings by identifying a potential composition from a scene that has inspired him, creating one or more value sketches to work out the composition, laying down a wash, and proceeding to paint, generally mixing his colors on the paper rather than on the palette. His palette consists of Daniel Smith paints.

Michael was a featured artist in the Fall 2007 and Spring 2011 issues of *Watercolor Magazine*, and the June 2011 issue of *Watercolor Artist*. Recently, he was included in the "Artists to Watch" section of the June issue of *Southwest Magazine*. He is a signature member of the American Watercolor Society, National Watercolor Society, Watercolor West, and the California Watercolor Association. He is also an Artist member of the California Art Club. Two of Michael's paintings were in the show, Artistic Visions of the Golden Gate Bridge, a recent exhibit in honor of the 75th birthday of the bridge; the exhibit was hosted by The George Krevsky Gallery in San Francisco; at least one of the paintings sold. To see the whole series, check out his

[michaelrreardon.blogspot.com/2012/02/golden-gate-bridge-series.html](http://michaelrreardon.blogspot.com/2012/02/golden-gate-bridge-series.html)"blog.

Michael will be teaching a two-day plein air workshop for CWA on July 21st & 22nd; although it's currently full, don't hesitate to get on the wait-list if you're interested, because sometimes people have to cancel. And if you love to paint en plein air and/or you love the freshness of Michael Reardon's style, you should make a point of catching his demonstration at the July meeting.

You might also want to check out his website [reardonwatercolors.com](http://reardonwatercolors.com) for future plein air workshops.



## newsletter deadline info

The deadline for placing items in the newsletter is the 15th of each month prior to publication.

Send articles and photos by disk, email, fax or in writing to:

**Patricia Rosa**

newsletter@californiawatercolor.org

5499 Wilke Dr.

Concord, CA 94521

Ph: 925.348.1120

eFax: 413.375.1851

## membership/ data manager

Mail all changes of address, phone number and email to:

**Anne Jacobson**

cwa.data@gmail.com

c/o CWA P.O. Box 4631

Walnut Creek, CA 94596

## monthly meetings

Meetings are held the third Wednesday of each month (except June and December) at 7:30pm,

**Shadelands Center**

111 N. Wiget Lane

Walnut Creek, CA

(NW corner of Wiget Lane and

Ygnacio Valley Road).

## cwa workshop info

**Wendy Oliver**

925.280.1944

**Janet Groza**

925.922.1235

**Michele Weitzenberg**

707.576.0466

## cwa gallery

**Gallery Concord**

1765 Galindo

Concord, CA

925.691.6140

**Hours:**

Thursday - Sunday, 11:00am - 4:00pm

Free parking behind the Gallery,

accessible only from Clayton Road

(just west of Galindo)

[www.galleryconcord.com](http://www.galleryconcord.com)

## e-newsletter info

To receive this newsletter electronically (and in color) please send a note to our Data Manager with the email address at which you wish to receive the newsletter. You will then no longer receive it on paper in the mail, but will receive it via email.

# from the president

## *Dry Brush Dilemma...*

My husband and I just finished 8453 miles of adventure while exploring many areas of this grand country, keeping our cozy Airstream in tow. I took all my art supplies with honest intentions of coming home filled with pieces of finished art. Instead, I returned with a gazillion photos and memories of what it was like to see other parts of the USA not yet visited and hiked by the two of us. It was just plain wonderful!

I want to thank everyone on the CWA board and members for covering while we were experiencing the Cliff Palace of Mesa Verde, listening or lurking for grizzlies on Glacier National Park trails and staring in awe at many scenes of the Colorado Plateau. It was even more pleasurable, knowing that many gracious people covered my CWA responsibilities. And, their efficiencies made it possible for me to slide into a board meeting 24 hrs after my return.

We had another full and successful CWA board meeting. I would like to share a few things with you about the meeting.

We have a new bookkeeper. Melissa Alva, new CWA Bookkeeper, has corporate, personal and non-profit bookkeeper experience. Wendy Oliver, CWA Workshop Director, recommended Melissa Alva. Kathy Vigil, previous CWA bookkeeper, gave notice a few months ago. Thank you to Kathy for her faithful years of service to CWA. Thank you to Melissa for filling this very important CWA position.

Luckily, a soft transition was activated and very positive results for CWA are taking place. The CWA finances are in a tune-up phase. When this process is completed, early fall, the board will present a financial report, in the newsletter, to the members. For now, I would like to respond to inquiries received in the General Meeting Suggestion Box.

## *Suggestion Box Questions from May General Meeting*

1. How much money is in the Building Fund?
2. Why do we (CWA) charge artists extra for this fund?
3. Do you really think CWA will EVER build or buy a Building?

## *Response*

1. This subject was raised during the June 20, 2012 board meeting. A request was made to determine the Building Fund balance. A response from the bookkeeper is expected at the July 11 board meeting.
2. The Building Fund, established by a previous CWA board, will need a board vote to eliminate the fee to artists. The current CWA board is awaiting financial results and evaluating the need for this charge. The members will be informed of a new policy in the CWA newsletter following a vote.
3. This is a very good question. The board is aware of the reality of a CWA building and giving it very serious discussion. Please watch for an announcement in future newsletters.

Thank you again to all our members. The board is working very diligently to address the needs of this organization. We appreciate your participation and welcome your help.

## *With a soon to get wet brush,*

Karen J. Powers, CWA President

(510) 502-6211

[karen\\_powers@hotmail.com](mailto:karen_powers@hotmail.com)



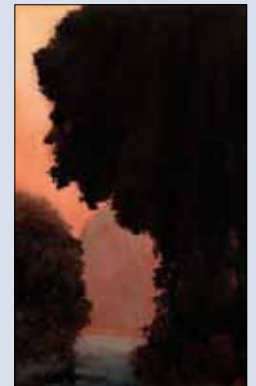
# Last Two CWA Workshops for 2012

For more info, check out artists' websites and/or the 2012 or 2013 workshop brochures (available online at [californiawatercolor.org/](http://californiawatercolor.org/)"CWA). And remember that if you sign up for two or more at the same time, you'll get a 10% discount.

## MICHAEL REARDON [WAIT-LIST] *Plein Air Painting* July 21-22/All Levels

Michael has traveled the world, creating plein air paintings as he goes. In this workshop he will share some of his insights into painting plein air, and how to enjoy it. Through demonstrations and hands-on painting, Michael will show ways to simplify and create dynamic compositions, work quickly and decisively, and capture the essence of a scene convincingly. He will cover the use of a limited palette, dynamic color mixing, and the use of light and value to describe form.

[www.reardowatercolors.com](http://www.reardowatercolors.com) \$165 for members.



## KATHLEEN ALEXANDER *Detailed Realism in Luminous Color* September 17-21/All Levels

Kathleen teaches and paints in both Hawaii and California and exhibits nationally. Her workshop will focus on how to capture the grace and beauty of tropical flowers and still life, so that your paintings look alive. Kathleen will show you how to create smooth transitions in petals, and flowers that glow with an inner radiance by underpainting and glazing. She will also cover the choice of painting subjects and the importance of light and composition. Although the primary subject of this workshop is flowers, it is important to note that the techniques you will learn are totally transferrable to any subject matter and many different styles of painting.



About her process, Kathleen says, "I paint from photos I've taken while in Hawaii and in California. Sometimes I combine many photos to create my composition. Lately, the focus of my painting has been tropical flowers and still life. I try to capture the grace and beauty of my subjects, and hope viewers of my paintings can share in the happiness they bring me. My goal is to make my paintings look alive."

For a step-by-step of Kathleen's painting process, check out this link:

<http://kathleenalexanderwc.blogspot.com/>

For other info about Kathleen, go to her website: [www.kathleenalexanderwatercolors.com](http://www.kathleenalexanderwatercolors.com)  
\$395 for CWA members.

# WATERCOLOR WORKSHOPS 2013



(More details here next month; see CWA website for the brochure)

Katherine Chang Liu	"Open Studio"	Feb. 18-22
Birgit O'Connor	"Big, Bold & Beautiful Flowers"	Mar. 18-22
Gerald Brommer	"Landscape Painting – Design & Content"	Apr. 15-19
Thomas Schaller	"The Architecture of Light"	May 10-12
Ric Dentinger	"Seeing & Painting the Layers of a Subject"	July 15-19
Jean Pederson	"Faces & Figures in Water Media"	Sept. 16-20
Lian Zhen	"Chinese Brush & Watercolor Painting"	Oct. 14-18



# member news

**Larry Cannon, CWA** recently had his painting *South Laguna View* accepted into the Laguna Plein Air Painters Association (LPAPA) 8th Annual Best of Plein Air Exhibit in Laguna Beach. The watercolor was completed during the Laguna Plein Air Invitational 2010 event (image attached). He also received the Best Watercolor Award from juror Gil Dellinger at the recent Carmel Art Festival plein air event.



South Laguna View by Larry Cannon

**Leslie Wilson, CWA Signature Member**, is exhibiting 26 paintings at the Boundary Oaks Clubhouse, 3800 Valley Vista Road, Walnut Creek, CA 94598. This exhibit is sponsored by Civic Arts Education in Walnut Creek, and runs through July 25, 2012.



by Valerie P. Cohen

**Stanford University Art Spaces has invited Valerie P. Cohen, CWA, SDWS** to have a show, July 6 to September 6, 2012. Her paintings will hang in the Paul G. Allen Building on campus.

**CWA members Janet Groza, Iretta Hunter, Carolyn WarmSun, Carol Husslein, Denise Oyama Miller and Charlotte Severin** all had paintings accepted into the Fresh Works 2nd Annual Open Exhibit, May 30 to June 30, 2012, at the Harrington Gallery at the Firehouse Arts Center, Pleasanton, CA.



**Ruth Miller** will have a dozen paintings on display at Mike's Cafe, 2680 Middlefield Rd., Palo Alto, CA. June 26 - August 26, 2012. Stop by for lunch/dinner and an art exhibit.

A Beer and a Bed by Ruth Miller

**Tony Segale** earned second place in watercolor for his painting "Percy Lasby Farms", in the Lodi spring Art Show at Woodbridge Winery, one of eight paintings accepted into this show.



Percy Lasby Farms by Tony Segale

**Pat Dispenziere** had six watercolors juried into the 2012 San Diego County Fair Exhibition of Fine Arts which runs June 8 thru July 4, 2012 at the Del Mar Race Track in Del Mar, CA. She received a 1st Place Award on "Tallin", a 3rd Place Award on "Still Waiting" and Honorable Mention Awards on "Tired Feet" and "Santorini Light".

## CWA 43rd National Exhibition The Prospectus

**Who:** Water media painters—here, there and everywhere

**What:** CWA 43rd National Exhibition

**Where:** Harrington Gallery, Pleasanton, California

**When:** Entry deadline September 8, 2012

**Why:** Because you love to paint!

Our committee is working hard in the back room. We are counting on you to be working hard in your studios, in a park, or down the street preparing great entries. Combined we can make this a great exhibition for you, local art enthusiasts, and all the potential visitors at the Harrington Gallery. Start now putting paint and water together on paper!

## Gallery at 48 Natoma Reception



Gallery at 48 Natoma reception on May 18. The show runs until July 5 at this great Gallery in Folsom, CA. Photographs by Pablo Villicana-Lara, who was the juror of this exhibition.





# Call for Entries

California Watercolor Association  
43rd National Exhibition  
January 17-February 16, 2013

HARRINGTON GALLERY, FIREHOUSE ARTS CENTER | PLEASANTON, CALIFORNIA

**ENTRY DEADLINE:** September 8, 2012

\$12,000 ANTICIPATED AWARDS

## **Juror: M.E. "Mike" Bailey, NWS**

Mike Bailey has won awards from watercolor societies around the country and has appeared in "Watercolor," "The Palette," and "Watercolor Artist" magazines. His work has also been featured in several books on the subject of watercolor. His paintings are held in corporate and private collections throughout the USA, Europe and Australia.

Considered a gifted art teacher, he is noted for his ability to articulate the elements and principles of design. He devised and taught a class at the University of California at Santa Cruz Extension, "Watercolor Beyond the Obvious," based on the principles of design and developing one's art through series work. He is a popular workshop instructor across the USA and occasionally in Europe.

He is a Signature Member and President Emeritus of the National Watercolor Society, a member of the California Watercolor Association and the Santa Clara Valley Watercolor Society. His art blog can be found at <http://www.mebaileyart.blogspot.com>

He lives with his wife Diana in Santa Cruz, California. His work and contact information can be seen at [www.mebaileyart.com](http://www.mebaileyart.com)

## **Venue**

The Harrington Gallery, in the Firehouse Arts Center, 4444 Railroad Avenue, Pleasanton, California, features the works of renowned visual artists of regional and national stature in painting, sculpture, installations, and conceptual art. Old Fire Station Number One, established in 1888, served downtown Pleasanton well for many years. This rebuilt facility became the basis for the Firehouse Arts Center, including a portion of the original building with brick walls preserved within the gallery space. The gallery is adjacent to Wayside Park and just a few steps off Main Street in the heart of downtown Pleasanton.

## **Exhibition Calendar**

September 8	Entry deadline
October 15	Acceptance/decline notification
November 12-16	Shipped paintings received
November 17	Hand-delivered paintings received
November 18	Juror's award selection
January 17, 2013	Exhibition opens to the public
January 19	Artists' reception and awards, 1pm to 3pm
February 16	Exhibition closes

## Eligibility

The 43<sup>rd</sup> National Exhibition is open to all artists 18 years or older. Paintings must be two-dimensional and primarily of water-based media on paper surface; watercolor canvas, Yupo, and Tyvek are acceptable. Pastel or collage may be used as long as **water-media is the dominant element**. No digital media, photography, prints, or reproductions. Source material and composition must be wholly original and not derived from any published images. Entries must be recent works completed within the last two years, entirely the work of the artist, and not shown previously in a CWA National Exhibition. No workshop or class work. Artists who fail to provide an accepted entry are disqualified from the next three CWA National Exhibitions.

## Size Limits

Minimum Image: 140 square inches, no side less than 10 inches

Maximum Frame, outside dimensions: 40"x40"

Maximum Weight: 40 lbs.

## Framing

All paintings must be framed in simple, square-cornered frames ready for hanging and protected under Plexiglas. Mats (optional) must be white or off white. Colored liner mats accepted. Additional details will be included in instructions to accepted artists.

## Online Entries Only

To enter, go to [www.californiawatercolor.org](http://www.californiawatercolor.org), click "Shows/Exhibitions," then "National Prospectus" for online submission details. Artists may enter up to three images submitted as digital files only. Images must be jpegs in RGB format (not CYMK), with 1200 pixels on the longest side, one painting per file. Show only the image without mat or frame. Label the image file with: Lastname\_Firstname\_Painting Title, i.e. (Doe\_Jane\_Bouquet of Roses.jpg).

## Entry Fees (non-refundable)

Entry fee is payable on PayPal by credit, debit, or individual account. CWA members: \$35 for one image, \$5 each additional image, maximum of three images. Non-members: \$45 for one image, plus \$5 each additional image, maximum of three images. Those wishing to join CWA may add \$45 annual dues during the entry process. Benefits of membership, effective for one year from date of payment, are at [www.californiawatercolor.org](http://www.californiawatercolor.org).

## Accepted Entries

Only one entry per artist may be accepted. All artists will be notified by email and posted online after October 15, 2012. Artists with accepted artwork may be asked for a higher resolution image for the catalog. Full instructions for shipping will be attached to the acceptance email. All accepted paintings will have a handling fee of \$45. Accepted work must match submitted image; paintings not consistent with submitted image may be disqualified. All accepted paintings will be represented in the catalog. Each Exhibition entrant will receive a complimentary catalog. Additional catalogs will be available for purchase.

## Sales

The Firehouse Arts Center will handle all painting sales and retain a 30% commission.

## Conditions and Liabilities

No work may be withdrawn before the end of the exhibit. CWA and the Harrington Gallery reserve the right to photograph artwork or copy images for promotional purposes. Insurance coverage is the artist's sole responsibility, both in transit and during the exhibit. Neither CWA nor the Harrington Gallery insures the artwork and neither shall be responsible for loss or damage to any artwork submitted. Accepted artists must sign a release of liability. The submission of entries to this competition shall constitute an agreement on the part of the artist to the terms and conditions as set forth in this prospectus.

If you have any questions, please email [43rd.national@californiawatercolor.org](mailto:43rd.national@californiawatercolor.org)

or call Exhibition Co-Chairs:

Sue Johnston

510-908-3097

Iretta Hunter

925-330-2988

Ready to enter? [Go to www.californiawatercolor.org](http://www.californiawatercolor.org) to continue with the online entry procedure.





## workshop corner workshops by members and others

**Michael Reardon AWS, NWS, CWA** will be leading a plein air workshop at the Mendocino Art Center September 22-23, 2012. The workshop will run from 9:30-4:30 each day. Enjoy a beautiful weekend in Mendocino while learning some of Reardon's tips for improving your painting en plein air. All levels welcome. Please go to [www.reardonwatercolors.com/workshops](http://www.reardonwatercolors.com/workshops) or [www.mendocinoartcenter.org/Fall12/Reardon.html](http://www.mendocinoartcenter.org/Fall12/Reardon.html) for more information and registration.

### **The Allure of Watercolor Workshop by Claire Verbiest**

July 27-29, 2012, 9:30-3:30

Concord, CA

\$295 for three days

Life-long learning in watercolor is rewarding and fun with Claire Verbiest, a talented and knowledgeable painter, who stimulates your creativity, relieves artists' block and inspires new ideas. The workshop theme is street scenes and flowers, giving you a solid foundation to create your own paintings. All levels of expertise are welcome. It does require basic knowledge of drawing and color.

For more information, or to register, go to:

[www.claireverbiest.com](http://www.claireverbiest.com), (925) 639-7161

or email [pam.howett@sbcglobal.net](mailto:pam.howett@sbcglobal.net)

### **3rd Annual Women's Journaling Alpine Retreat**

Join us, September 9-14, 2012, for the 3rd Annual Women's Journaling Alpine Retreat in the Sierras near Bear Valley with Elaine Frenett and Jean Warren, as we journal with PAINT and WORDS along shimmering Lake Alpine, the forest trails and in our cozy cabins. Savor women's energy and the FAB food

(our Culinary Institute Chef's Encore performance!!) - All included. Sign-up by July 15 for two extra days!

<http://visualartjournaling.wordpress.com/itinerary-2012-retreat/>  
or call Jean at (707) 875-9240 or Elaine at (541) 944-2196

**Painting Laboratories for Creative Expression with Susan Cornelis** in her Sebastopol, CA studio. Learn to paint intuitively, capturing thoughts and feelings in a playful format while learning mixed media painting techniques; inks, acrylics, textures, collage, image transfers and more.

### **Tuesday Afternoon Muse Group**

(meets weekly for 6 weeks) July 17-Aug 21, \$210

**Inks and Textures Galore!** A one day workshop, Aug. 11, \$80

Contact Susan at (707) 824-8163 or [susan@imaginewithart.com](mailto:susan@imaginewithart.com)

### **3-Day Watercolor Workshop with Jane Hofstetter,**

October 12-14, 2012, daily 9.30 to 4 pm. The first day is indoors at the South Lake Tahoe Recreational Complex, 1180 Rufas Allen Blvd. followed by plein-air classes in Hope Valley for the fall color. Non-members \$ 200, TAL members \$ 175.

For details and to sign up contact:

TAL Workshop Coordinator Dee Miller -Meyer,

[deeatthelake@charter.net](mailto:deeatthelake@charter.net) or call (775) 588-5416

Tahoe Art League Gallery telephone is (530) 544-2313

### **Tom Jones Plein Air Watercolor Adventure**

Five Day Workshop, September 17-1, 2012

Great Smokey Mountains, Cherokee, NC

Cost: \$295.00 (Includes All Art Supplies)

Contact: Tom at (386) 775-3635

Email: [Tom@TomJonesArtist.com](mailto:Tom@TomJonesArtist.com)

Web Site: [www.TomJonesArtist.com](http://www.TomJonesArtist.com)

## show news

### **NAWS Northern Arizona Watercolor Society Call for Entries**

Experimental Water Media Exhibition 2012. September 26 - October 14, 2012. Special Exhibition Gallery at the Sedona Arts Center, 15 Art Barn Road, Sedona, AZ. Deadline For Entries is Aug 1, 2012. This exhibition is open to all NAWS members whose dues are current.

Nonmembers may enter by paying membership dues and entry fees. Prospectus can be downloaded from: <http://naws-az.org>

### **The Pittsburgh Watercolor Society presents its 66th Annual International Exhibition 2012 Aqueous Open**

October 6-November 3, 2012 at Third Street Gallery, Carnegie, PA. Over \$5,000 in cash and prize awards. Juror is Miles Batt, author of *The Complete Guide to Creative*

*Watercolor*. Entry deadline is July 9, 2012

Prospectus available at:

[www.pittsburghwatercolorssociety.com](http://www.pittsburghwatercolorssociety.com)

### **Santa Cruz Art League presents Visual Politics: Art and the American Experience, 2012**

October 27-November 25, 2012. Juried by Maureen Davidson, \$1,000 in Awards. Open to U. S. residents, 2D & 3D art. Prospectus at [www.scal.org](http://www.scal.org) or send SASE to Santa Cruz Art League, 526 Broadway, Santa Cruz, CA 95060  
Jpeg & Prospectus deadline is August 24, 2012, 5pm. For info contact [cindy@scal.org](mailto:cindy@scal.org)

### **FACE ME Juried Exhibition**

July 26-September 1, 2012. The Sebastopol Center for the Arts calls for artwork that captures the likeness, the personality or even the mood of a person in a self-portrait or portrait. Any style or medium, including video and film. Deadline for submissions is

July 9, 2012, 3-6pm. Juried by Carlos Merino de Villasante. For guidelines and to apply online go to [www.sebarts.org](http://www.sebarts.org) or contact Catherine Devriese at Sebastopol Center For The Arts, 6780 Depot St., Sebastopol, CA. (707) 829-4797

### **2nd Annual SOFA Art Walk**

August 4-5, 2012. 11:00am-5:00pm South A St., Studios, #7, Arts District in Santa Rosa, CA. For info contact Christie Marks at (707) 695-1011

### **MASQUERADE" National Juried Exhibition**

October 25- November 18, 2012. Submissions deadline is August 24, 2012. Sculpture, painting, drawing, photo, printmaking, ceramics, assemblage, collage, mixed media, fiber art, artist book. Arc Gallery, 1246 Folsom St, San Francisco, CA. Juried by Jack Fischer. For info go to [www.arc-sf.com](http://www.arc-sf.com) or [arcstudiossf@gmail.com](mailto:arcstudiossf@gmail.com).

## board of directors

*president* **Karen Powers** 510.502.6211  
*vice president* **Open**  
*director california exhibits* **Lynda Moore** 415.454.4027  
*director of programs* **Carol Husslein** 925.935.6779  
*secretary* **Leslie Wilson** 925.935.7529  
*budget director* **Open**  
*director of communications* **Open**  
*directors of workshops* **Wendy Oliver** 925.280.1944  
**Janet Groza** 925.922.1235  
asst: Alexis Milea  
registrar: Michele Weitzenberg 707.576.0466  
*co-directors of outreach* **Sheila Cain** 510.845.0863  
**Maryellen Reinthaler** 925.672.0102  
*director of membership* **Sue Johnston** 510.531.5471  
*board members at large* **Iretta Hunter, Joan Gombos** 510.367.4295

## volunteer committees

*national exhibition* **Open**  
*gallery concord co-directors* Myrna Wacknov and Mary Spivey  
*gallery concord treasurer* Gladys Schaible  
*gallery concord publicity* Qian Gao  
*community outreach* Carol Smith, Helene Yu-June Rice,  
Mona Rivers-Vasquez, Jack Gautreaux,  
Charlotte Huntley  
*mail distribution* Sue Johnston  
*hospitality* **Open**, assistant: **Open**  
*greeter* Donna Gamel  
*treasurer assistants* Gladys Schaible, Annette Hodtwalker  
*video library* Charlotte Morris\*, Carolyn WarmSun, Terrie Moore  
*plein air* Samantha McNally  
*photographer* Rollando Barrero  
*panel rental* Barb Bochenek\*, Pam Howett  
*cwa webmaster* Bruce Stangeland

## staff

*membership/data manager* Anne Jacobson  
*newsletter editor* Patricia Rosa  
*accountant* Melissa Alva  
*audio/visual set up* Stephen Abts

*\*Chair of Committee*

## announcements

### Back Issues of The Artist and American Artist Magazines

Victoria Chiofalo has been saving every single issue of The Artist and American Artist Magazines since 1985 (5 office boxes of space). If anybody wants them to call Victoria Chiofalo at (510) 669-1150 or her cell (510) 734-6737.

# CWA Outreach



Chela Fuentes  
6-8th Grade  
Livermore Valley  
Charter School



Ganeet Jhajj  
9-10th Grade  
James Logan High School



Amy Su  
11-12th Grade  
Redwood Christian School

## Alameda County Fair Student Art Show

In our effort to encourage the next generation of watercolorists, CWA is awarding three fifty dollar checks to the best student paintings in three age categories. On June 14, Signature Member and show juror, Margaret Fago, and board member Joan Gombos, traveled to the Alameda County Fairgrounds in Pleasanton to judge the Student Art Show Awards.

The winner in the 6-8th grade category is Chela Fuentes from Livermore Valley Charter School. Ganeet Jhajj from James Logan High School, won for the 9-10th grade and Amy Su from Redwood Christian School took the award for 11-12th grades. We applaud these students interest in watercolor and encourage them to continue painting.

Margaret Fago, CWA  
Show Juror



To Volunteer, contact  
[outreach@californiawatercolor.org](mailto:outreach@californiawatercolor.org)



# plein air corner



## Two Diverse Locales Provide Inspiring Plein Air Choices

by Andrea Baron

The Bay Area provides a wealth of beautiful areas to paint, and the two locales recently captured by CWA plein air artists were no exception.

On Saturday, May 19, seven artists gathered along the shores of China Camp State Park, where San Pablo Bay's intertidal salt marshlands provide an ideal habitat for grass shrimp and shorebirds near the remnants of a former Chinese fishing village. Painting that day were Andrea Baron, Rolando Barrero, Marshall Lockman, Samantha McNally, J.P. Panter, Brian Rusnak, and David Savellano. China Camp is on the list of planned state park closures. Treat yourself to your own plein air day before this peaceful park is no longer available to you.

Two weeks later, on Friday, June 1, ten artists spread out at Blake garden—the 11-acre teaching garden belonging to the University of California and located in the Berkeley/Kensington foothills. Spring was in full force as nature displayed glorious color throughout the garden. Painting that day were Irina Sztukowski, Patrice Stone, Mary Spivey, Brian Rusnak, Robin Moreno, Samantha McNally, Sharon Lewis, Carol Jurasin, and Andrea Baron. This was a return



trip for CWA from last year, yet 10 more trips would yield fresh painting ideas.

### *A message about critiques from CWA Plein Air Chair Samantha McNally*

At each plein air event, we have a show and tell and optional critique when we meet at 1 pm. We gather together to see the paintings, finished or not, that were created at the event. As chair, I'll remind the group each time that critiques are optional, and I'll ask each person as we go through the paintings whether or not he/she wants a critique. A critique can sometimes be helpful to an artist, but it is not at all required or even preferred by CWA.



## sponsorships

The CWA newsletter is accepting ads from anyone who would like to be a sponsor of CWA. The newsletter is sent out monthly to all of our members. It is a very effective way to reach a large audience of artists. All CWA artists paint with watercolors, but not exclusively. Many members also paint in oils, acrylic and pastels.

We are offering the following sponsor packages that reflect available advertising space. All ads, except Classified, run for a minimum of 3 months and are payable in advance. A 10% discount is available to CWA members, members also get classified ads for free. Deadline for insertion is the 10th of each month prior to publication (ie, February 10 for the March newsletter).

Formats accepted are digital or camera-ready artwork. Images should be scanned at 300 dpi. File format preferred is PDF, but we can accept JPG, TIFF, EPS files. All ads will appear in black and white in the print version, and in color in the email version.

Contact Patricia Rosa at [newsletter@californiawatercolor.org](mailto:newsletter@californiawatercolor.org) or 925.348.1120 for further information.

## sponsor levels

### Distinguished Donor

Full Page/7.5 x 10  
3 months: \$750  
12 months: \$3000

### Benefactor

Half Page/7.5 x 5  
3 months: \$450  
12 months: \$1800

### Fellowship

Third Page/7.5 x 3.25  
3 months: \$360  
12 months: \$1440

### Patron

Quarter Page/3.75 x 5 (vert)  
3 months: \$240  
12 months: \$960

### Friend

Eighth Page/3.75 x 2.5 (hrz)  
3 months: \$180  
12 months: \$720

### Classified

text only: approximately 400 characters, including spaces. \$50/month (free to CWA members and non-profit organizations)



CALIFORNIA  
WATERCOLOR  
ASSOCIATION Box 4631 • Walnut Creek, CA 94596-0631

Nonprofit Org.  
U.S. Postage  
**PAID**  
Concord, CA  
Permit No. 720

Return Service Requested

## 2012 Calendar

### MEETINGS & DEMOS

January 18	Marcy Wheeler – pet portraits
February 15	Member critique and show
March 21	Linda Sutton
April 18	Ric Dentinger
May 16	Margaret Fago
June	No Meeting
July 18	Michael Reardon
August 15	Salvador Valencia
September 19	Kathleen Alexander
October 17	Leslie Wilson
November 21	Jerry Stitt
December	No Meeting

### MEMBER SHOWS

Feb. 25 – Mar. 30	John Muir Medical Center
May 18 – July 5	Gallery at 48 Natoma, Folsom

### WORKSHOPS

March 19-21	Linda Sutton
April 16-20	Ric Dentinger
June 16-17	David Lobenberg
July 21-22	Michael Reardon
September 17-21	Kathleen Alexander

### CWA PLEIN AIR DAYS

January 14	Planning meeting at Gallery Concord 1:00pm
February 18	Niles
March 17	Tao House
April 21	Sonoma Town Square
May 19	China Camp
June 1 (Friday)	Blake Garden
June 16	Crockett
July 21	Michael Reardon's Plein Air Workshop <small>(See workshop page of CWA's website)</small>
July 28	Crab Cove
August 18	Miller Knox Park
September 15	Pt. Reyes, Pierce Pt. Ranch
October 20	Briones Park
November 17	Benicia
December 15	Quinn's Lighthouse

**Plan ahead! Submissions for the newsletter must be received by the 15th of the month prior to publication! Send to Patricia Rosa (see page 2).**



Photos of Paint Outs, CWA show winners, & Monthly Demos  
are on [www.facebook.com/californiawatercolor](http://www.facebook.com/californiawatercolor)