



August 2014

# California WATERCOLOR Association

General Meeting • 7:30 pm, Monday, August 20, 2014 • Shadelands Center, 111 N. Wiget Lane, Walnut Creek, CA

P.O. Box 4631  
Walnut Creek, CA 94596  
www.californiawatercolor.org  
email: info@californiawatercolor.org

## contents



- 2** From the President
- 3-4** CWA Workshops
- 5** Member News
- 6** Directors  
Committees  
Staff  
Dear Elizabeth
- 7** Outreach
- 8** Show News
- 9** Sponsorships  
Artist Getaways
- 10** 45th National Show
- 11** Plein Air
- 12** Workshop Corner
- 13** Calendar

**PLEIN AIR**  
Come paint with us  
August 16 in  
Santa Cruz

For details, go to:  
[www.californiawatercolor.org](http://www.californiawatercolor.org)  
on the plein air page.

## August Guest Artist Melissa Adkison



Melissa Adkison paints in most media, but she specializes in watermedia. Her paintings in watercolor favor flat washes combined with a wet'n'wet technique using bright colors and varied patterns to attain distinctive textures. Her works in Gouache demonstrate her love of portraits, landscapes and her creative drive towards abstraction.

"I have been influenced by many artists. Frieda Kahlo painted her feelings, the good ones and the ugly ones. I realized that when you paint what is important to you, it is the most creative you will be. Each of us are unique in the way that we paint. My watercolor technique establishes composition and value with dark shadows first. Next is the glazing with the local colors. This way I can create the drama. I see mainly in value and color. Picasso is another exciting artist. When I look at his work I remember that there are many ways to do the same thing. My recent abstractions in Gouache are influenced by his cubist movement. Truly I am inspired by all artists."

Melissa lived in Boulder Colorado from 1981 until 1987, where she studied watercolor with Charles Ott focusing primarily on still life and urban settings. Since then she has been living and work-

ing in Novato, California. She studied for two years with Wally Hedrick, and her subject matter migrated to include life commentaries, self-expression, portraiture and landscapes.

Adkison is a signature member of the National Watercolor Society, Marin Society of Artists, San Diego Watercolor Society, Missouri Watercolor Society, California Watercolor Society and a graduate of Fine Arts at UC Santa Barbara. She has been painting professionally since 1985.

Collectors across the country own Melissa's paintings. Her works are currently being shown at Marin Society of Artists Rental Gallery, Gallery One in Petaluma, Accents in Novato and Marin General Hospital. She has been a consistent award winner throughout her career, having received awards at juried shows including the California Watercolor Society National Exhibition, the Rocky Mountain National Watercolor Exhibition, the California State Fair, the Triton Art Museum Biennial State-wide Watercolor Exhibition, Los Gatos Art Museum, the Marin County Fair, Wasco and Marin Society of Artists.

Her work has been accepted into other juried national and international shows, including Watercolor USA, the National Watercolor Society Traveling Exhibition, National Watercolor Society Exhibition, the Louisiana International Watercolor Society Annual Exhibition, the San Diego International Watercolor Exhibition, and National Watercolor Exhibitions in Ohio, Alabama and Tubac, Arizona. She has been published in the book Best of Watercolor: Composition and in the national magazine Watercolor Artist.

She also participates in various local summer art festivals and museum exhibitions around the state. You will find her every Spring at Marin Open Studios in her home studio in Novato. Her other activities include teaching art, conducting demonstrations, writing magazine columns and judging shows in the Bay Area.

[theartistmelissa@gmail.com](mailto:theartistmelissa@gmail.com)  
[www.theartistmelissa.com](http://www.theartistmelissa.com)





## newsletter deadline info

The deadline for placing items  
in the September newsletter is the  
15th of August.

Send articles and photos by disk,  
email, fax or in writing to:

**Patricia Rosa**

newsletter@californiawatercolor.org

5499 Wilke Dr.

Concord, CA 94521

Ph: 925.348.1120

eFax: 413.375.1851

## membership/ data manager

Mail all changes of address,  
phone number and email to:

**Anne Jacobson**

cwa.data@gmail.com

c/o CWA P.O. Box 4631

Walnut Creek, CA 94596

## monthly meetings

Meetings are held the third  
Wednesday of each month  
(except June and December)  
at 7:30pm,

**Shadelands Center**

111 N. Wiget Lane

Walnut Creek, CA

(NW corner of Wiget Lane and  
Ygnacio Valley Road).

## cwa workshop info

**Wendy Oliver**

925.280.1944

**June Hunt**

510.520.3802

**Anne Jacobson**

510.339.6916

## e-newsletter info

To receive this newsletter electronically  
please send a note to our Data Manager  
with the email address at which you wish  
to receive the newsletter.

# from the president

## A Few Years ago...



*Early Oakland, 7th and Adeline Streets, The Southern Pacific Depot*

William Keith

1867

16 x 23" watercolor

Oakland Museum of California

Gift Mrs. Nancy Crane Hussey

Picture, watercolor of Adeline station in 1867. Painted by William Keith, 1838-1911. Scottish born William Keith's reputation as California's most prominent painter of grand Sierra Nevada landscapes began small with his illustrative work as a commercial wood engraver in San Francisco. Keith was living in Oakland in 1867 when he produced a number of watercolors depicting East Bay scenes that included this rural looking view of passengers waiting at a small station house on the 7th Street rail line leading to Oakland's waterfront on San Francisco Bay.

Please enjoy your summer and William Keith's watercolor. How things have changed.

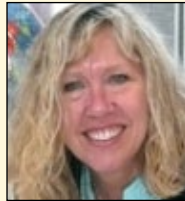
*All the best,*

*Karen J Powes, CWA President*

References: Oakland Museum of California [www.museumca.org](http://www.museumca.org)  
[www.wikipedia.org](http://www.wikipedia.org)



# JEANNE VODDEN AUGUST 2014



## *Jeannie Vodden*

Florals & Still Life—Very Colorful, Somewhat Loose

All Levels

3 Days/August 14 to 16

Jeannie Vodden is a versatile painter of portraits, still life, floral, landscape and fantasy. Jeannie will demonstrate her rhythmic wet-on-dry approach to watercolor using a limited palette of transparent staining color. The subject will be a small floral still life, working from photo references. The workshop will include watercolor demonstrations, plenty of painting time, individual attention and gentle critiques. Students will gain skill in basic watercolor techniques, the use of a limited palette, how to heighten color, and how to see and paint light and color. CWA members \$395, non-CWA \$450.



And remember that if you sign up for two or more at the same time, you'll get a **10% discount**.

# DICK COLE SEPTEMBER 2014



**Dick Cole**  
Re-Imagining the Familiar  
5 Days, September 15 -18

We are pleased to announce that Dick Cole will be giving a workshop entitled Re-Imagining the Familiar. The focus of this workshop will be to expand your watercolor experience by exploring new techniques and materials, and revisiting familiar ones from a different perspective. Students will be challenged to try to discover the extraordinary within the ordinary. "We need to learn to paint in our own 'backyards' in order to find the worthwhile in the commonplace".

In the workshop, we will study and practice contrast through value studies. We will paint on different surfaces, combining transparent and semi-opaque watercolor. This diverse workshop will include figure studies using old family black and white photos for reference, and marine and landscape themes using identifiable objects to establish scale. All painting sessions will begin with a preliminary value sketch. And above all, Dick says, he will endeavor to make the class a joyful experience.

He has taught painting and illustration at the Academy of Art University, San Jose State University and Foothill College, and is an Artist Member of the California Art Club.

CWA members \$440, non-CWA \$495.





# member news



Waiting for The Boys by Barbara Tapp

**Barbara Tapp** received an honorable mention in the San Clemente Plein Air Event Quick Draw competition for her painting “Waiting for The Boys”.



In the Everglades by Pat Moseuk

**Pat Moseuk's** painting, “In The Everglades” has been juried into the Society of Acrylic Painters 17th Annual International Exhibition. She is eligible to become a Signature Member of ISAP. The exhibition will run from July 31 - August 24, 2014 at the Paso Robles Art Assoc. show room gallery, 1130 Pine Street, Paso Robles, CA. Public Reception takes place August 2, 5:00 - 9:00pm.



After the Fire by Robin Purcell

**Robin Purcell** has three paintings in this Saint Mary's Museum of Art Exhibit “By Invitation Only, Revealing the Landscape” a contemporary landscape invitational featuring 27 of the Greater Bay Area's most intriguing and gifted artists, emerging, mid-career, and established, who vividly demonstrate the remarkable range and breadth of this iconic subject.

The opening is August 10, 2:00 - 4:30pm. The exhibit runs August 10 to September 21.

“This is the side of the mountain I paint most often. It had a lovely trail of pink soil left in the fire's path. There was a brief green season this spring with softer greens than usual. I feel compelled to try to capture the changes on Mount Diablo as it heals and am working on an after the fire Series”. *Robin Purcell*

**John A Komisar** will be exhibiting 18 watercolor Paintings at the Art Gallery at the Walnut Creek Library from July 23 - September 15. The title of this show is “Contra Costa Trails Series”. If you have any questions concerning this exhibition, please email John at jakart3113@aol.com or call him at (925) 933-8344.



## board of directors

<i>president</i>	<b>Karen Powers</b> 510.502.6211
<i>co-vice president/membership</i>	<b>Sue Johnston</b> 510.531.5471
	<b>Robert Davidson</b> 510.552.4924
<i>co-chair california shows</i>	<b>JoAnn McMahon</b>
	<b>Fran Osborne</b>
<i>director of programs</i>	<b>Carol Husslein</b> 925.935.6779
<i>secretary</i>	<b>Leslie Wilson</b> 925.935.7529
<i>budget director</i>	<b>Iretta Hunter</b> 925.330.2988
<i>co-chair communications</i>	<b>Sharon Hind-Smith</b> 415.310.8165
	<b>Arena Shawn</b> 765.491.8338
<i>directors of workshops</i>	<b>Wendy Oliver</b> 925.280.1944
<i>workshops assistants</i>	registrar: June Hunt 510.525.0965
	publicity: Anne Jacobson 510.339.6916
<i>co-directors of outreach</i>	<b>Sheila Cain</b> 510.845.0863
	<b>Victoria Bianco</b> 925.687.8675

## staff

<i>membership/data manager</i>	Anne Jacobson
<i>newsletter editor</i>	Patricia Rosa
<i>bookkeeper</i>	Melissa Alva
<i>audio/visual set up</i>	Annegret Van Gemenen- <i>primary</i> Don Husslein- <i>alternate</i>

## volunteer committees

<i>national exhibition</i>	Ruth Miller
<i>community outreach</i>	Carol Smith, Helene Yu-June Rice Mona Rivers-Vasquez Charlotte Huntley Maria Batkova Deb Taylor
<i>mail distribution</i>	Sue Johnston
<i>hospitality</i>	Open, assistant: Open
<i>greeter</i>	Donna Gamel
<i>treasurer assistants</i>	Annette Hodtwalker
<i>video library</i>	Charlotte Morris* Terrie Moore
<i>plein air</i>	Samantha McNally
<i>photographer</i>	Rolando Barrero
<i>panel rental</i>	Barb Bochenek* Pam Howett
<i>cwa webmaster</i>	Efrain Ibarra

## Dear Elizabeth...

### Questions and answers about watercolor art

#### Can we learn how to try something new in our painting?

In my second column, I am going to follow up on Mary Whyte's comments on how we might learn. We start by looking at and perhaps copying the work of others. As we keep working, our individual and unique voice begins to emerge. I wanted to share some thoughts about how I might try something new and recognize the outcomes as worthwhile.

As inspiration, I returned to one of my favorite paintings, that while not watercolor was very innovative when painted in 1929. Georgia O'Keeffe's painting of the Lawrence Tree evokes powerful memories for me. Like most of us, I remember lying on the ground and gazing up through tree branches and leaves, to find stars in the sky. In O'Keeffe's painting, an unusual composition brings back memories and more.

The Lawrence Tree explores an extraordinary personal perspective. O'Keeffe is very far from traditional landscapes because she uses a horizontal rather than vertical perspective.

I remember lying on the horizontal ground to see stars at night, in the painting; I see sinuous branches moving against dark foliage. The stars shining through softly moving branches are O'Keeffe's vision, which interacts with my memories. The experience is oddly moving and I love the painting.

Being innovative is more acceptable in some contexts. Adding and subtracting like spelling are probably not arenas for original thought. In contrast, the arts place a value on original expression. In addition to and maybe greater than her skill, O'Keeffe brought an original character to her art. As an innovator, she crossed boundaries, took calculated risks, found opportunities where others saw limits, and was a passionate and adventurous woman.

As I consider my own work and life, I ask what opportunities I might have missed? I wonder if I am adventurous enough. What would I be willing to give up to find the answers? What might I lose if I fail to learn something new?

If I take some risks as an artist, how might I know if the piece works? Looking at the Lawrence tree, reminds me that judging art is non-verbal, part hunch and part empathy. Does the piece work? Does it feel right? I keep looking until I know. When I look at O'Keeffe's painting, I know.



Well, just a few thoughts about art on this lovely morning in California. I am beginning to see a some questions appear in my email. Please remember to send in your thoughts, comments, and questions as we begin our community dialogue. Thanks for reading and I hope to hear from you soon!

Email: [ejohns5513@aol.com](mailto:ejohns5513@aol.com)





# Alameda County Fair Awards

## OUTREACH



For many years CWA has judged and given \$50 awards plus blue ribbons to students for their water media paintings at the Alameda County Fair.

On June 12th Sheila Cain, Victoria Bianco and Marianne Elliot viewed and judged the ACF artwork. It was pleasure to see such accomplished works, sophisticated concepts and some thoughtful titles. There were no entrants for the 7th and 8th grade division which made the dilemma of choosing between Kaylee Vandagriff's painting "Chess" and Charolotte Miranda's "Inside His Mind: Charles Dickens' Hard Times" easy. They became co-winners.

The award for the 11th and 12th grade division had two excellent entrants. "Dog" by Jessica San Nicholas won for both the abstract painting in the background as well as the realistic and appealing dog in the foreground with excellent ranges in the dark values. "Opposum" by Chelsea Camarota would be awarded a letter of recognition as it is truly frightening but counters with the words "FEAR IS A REFLEX: CONFIDENCE IS A CHOICE."

The Alameda County Fair has adult art exhibits and awards. They will be informing CWA of the entry dates. Maybe a CWA artist will win an award in 2015.

To Volunteer, contact outreach@californiawatercolor.org

"Opposum: Fear is a Reflex: Confidence is a Choice" by Chelsea Canarota

The 9th & 10th Grade division was judged a tie. One co-Award for the 9th & 10th grade division went to Kaylee Vandagriff for "Chess".



The second co-Award for the 9th & 10th grade division went to Charlotte Miranda for "Inside His Mind: Charles Dickens' Hard Times."



The Award for the 11th & 12th Grade division went to Jessica San Nicholas for "Dog"



## **ADAS - The Art of the Escape Call for Entries**

August 28 – September 28, 2014,

Artists Reception: August 29, 2014

Registration required by: August 1, 2014

Entry fee: \$25 for (1) or (2) entries

Please direct inquiries to Megan Parks-Haller

at [meganparkshaller@gmail.com](mailto:meganparkshaller@gmail.com),

(925) 413-3438 or (925) 426-9295

[adas4art.org](http://adas4art.org)

Village Theatre Art Gallery

233 Front Street, Danville, CA, (925) 314-3460

## **“DARK” National Juried Exhibition 2014 at Arc Gallery**

What is dark, what was hidden, what needs to be revealed? This exploration of “Dark” showcases the artists’ creation of new and alternative realities, where the worlds of landscapes, figures, architecture, objects, and natural phenomena are emphasized or subverted, revealed or obscured, and investigates the many layers that surround our traditional sense of the real. Categories Accepted: Sculpture, painting, drawing, photo, printmaking, ceramics, assemblage, collage, mixed media, fiber art, artist book.

Venue: Arc Gallery, 1246 Folsom St., San Francisco, CA

Juror: Nancy Toomey

Website: [www.toomey-tourell.com](http://www.toomey-tourell.com)

Exhibition Dates: November 8, 2014 - December 6, 2014

Opening Reception: Saturday, November 8, 2014

Deadline for Submission: September 4, 2014

Submission: [www.arc-sf.com/dark.html](http://www.arc-sf.com/dark.html)

Questions: [ArcGallerySf@gmail.com](mailto:ArcGallerySf@gmail.com)

Website: [www.arc-sf.com](http://www.arc-sf.com)

## **Call for Entries**

### **Fresh Art 2014 - National Juried Art Show**

September 13 -October 12, 2014

Presented by the Marin Society of Artists Gallery located on the grounds of Marin Art & Garden Center, 30 Sir Francis Drake Blvd., Ross, CA, (415) 454-9561

Awards of \$1,000; \$500; \$250

Juror: Dr. Stephanie Hanor

Digital entries uploaded by August 5, 2014. 5:00pm, PDT

Accepted artwork shipped in: September 8, 2014

Accepted artwork walk-in receiving: Sunday, September 7, 1:00pm - 3:00pm and Monday, September 8, 2014 10:00am - Noon

Prospectus and online entry at:

<http://marinsocietyofartists.org>

## **Call to Artists - Art Bra Show**

Women’s Wisdom Art, [www.womenswisdomart.org](http://www.womenswisdomart.org) and Albie Aware Breast Cancer Foundation, [www.albieaware.org](http://www.albieaware.org) are preparing to host the Art Bra Show at Blue Line Arts in Roseville to bring awareness to the plight of breast cancer in the region and its effects on all women.

This exhibit will feature artwork with representation of bras by local artists to help bring awareness and raise funds for Women’s Wisdom Art and Albie Aware Breast Cancer Foundation.

Participants are asked to create a special piece of art using the bra as a symbol of the struggles with breast cancer. These pieces will be displayed in the West Park Workshop Gallery at Blue Line Arts from September 4 - October 4, 2014. All pieces will be included in a silent auction, to take place on September 20, 2014.

Entry to this art show is open to all.

Enter online at <http://bluelinearts.org/exhibits/calls.html>.

Deadline for entry is August 4, 2014.

## **Works on Paper - A National Art Exhibit**

August 15 - September 14

Reception: August 23, 2014 3-5pm

Juror: Noah Buchanan, Artist/Professor

University of California at Santa Cruz

[www.noahbuchanan.com](http://www.noahbuchanan.com)

**‘Scene on the Strait’** returns August 9, 2014

10:00am - 5:00pm

Martinez Regional Shoreline Park

22 Artists Participating

There will be a Fine Art Miniature Gallery Special Show

## **Sebastopol Center for the Arts BEASTIES!**

Deadline for entries: September 22, 2014,

show date: October 30, 2014

Call for artwork featuring animals large or small from any kingdom, real or born in the realm of your imagination. Think also animal-like creatures, prehistoric, realistic to futuristic and expressions of your ‘wild side’, your fears or dreams. Open to any medium; 2 or 3 dimensional, film, costume or performance.

More info at: (707) 829-4797 or [www.sebarts.org](http://www.sebarts.org).



## sponsorships

The CWA newsletter is accepting ads from anyone who would like to be a sponsor of CWA. The newsletter is emailed monthly to all of our members. It is a very effective way to reach a large audience of artists. All CWA artists paint with watercolors, but not exclusively. Many members also paint in oils, acrylic and pastels.

We are offering the following sponsor packages that reflect available advertising space. All ads, except Classified, run for a minimum of 3 months and are payable in advance. A 10% discount is available to CWA members, members also get classified ads for free. Deadline for insertion is the 10th of each month prior to publication (ie, Feb. 10 for the Mar. newsletter).

Formats accepted are digital or camera-ready artwork. Images should be scanned at 300 dpi. File format preferred is PDF, but we can accept JPG, TIFF, EPS files. All ads will appear in black and white in the print version, and in color in the email version.

Contact Patricia Rosa at [newsletter@californiawatercolor.org](mailto:newsletter@californiawatercolor.org) or 925.348.1120 for further information.

## sponsor levels

### Distinguished Donor

Full Page/7.5 x 10  
3 months: \$750  
12 months: \$3000

### Benefactor

Half Page/7.5 x 5  
3 months: \$450  
12 months: \$1800

### Fellowship

Third Page/7.5 x 3.25  
3 months: \$360  
12 months: \$1440

### Patron

Quarter Page/3.75 x 5 (vert)  
3 months: \$240  
12 months: \$960

### Friend

Eighth Page/3.75 x 2.5 (hrz)  
3 months: \$180  
12 months: \$720

### Classified

text only: approximately 400 characters, including spaces. \$50/month (free to CWA members and non-profit organizations)

## artist getaways

### Artist Getaway Art Vacations

Join us on an Artist Getaway. Occidental is in October 2014 and Murphys is in June 2015. Paint with other artists, meet new friends and enjoy an art vacation.

Please visit [www.artistgetaway.com](http://www.artistgetaway.com) for more information about these two Artist Getaways and more to come!

Beautiful Bodega Bay is only 10 scenic miles from Occidental, the small coastal forest town we will be staying in.

October 5-10, 2014  
OCCIDENTAL HOTEL  
3610 Bohemian Hwy  
Occidental, CA 95465.

In Murphys we enjoy participating in the Art Show in the Hovey Winery front lawn each year. Murphys is a small town in the Sierra foothills with plenty of beauty to inspire our art.

June 7-12, 2015  
MURPHYS SUITES  
134 Hwy 4. Murphys, CA 95247

As a participant in any Artist Getaway you may enter your paintings in the Art show at the aRt Cottage - 2238 Mt. Diablo Street, Concord, CA California during the month of July, 2015. [www.artcottage.info](http://www.artcottage.info)

You can visit aRt Cottage this month to see our current show.



## National Exhibition Countdown



Shadows of a Milltown Evolution by Kathleen Conover

Deadline: September 5

---

THE National Exhibition Committee will be meeting at 6:00 for dinner before our August 20th General Meeting at Shadelands. I encourage you to join us. THIS WILL BE OUR ONLY MEETING for our 2015 Exhibition. I will bring dinner if you will come early. Come to learn more about our National Exhibition and maybe find a way to participate. More hands, make for.....well, you know the lecture by now! Please email me if you'll be joining us so I can bring enough forks. This is one of the most exciting CWA events. Please get Involved.



# plein air corner

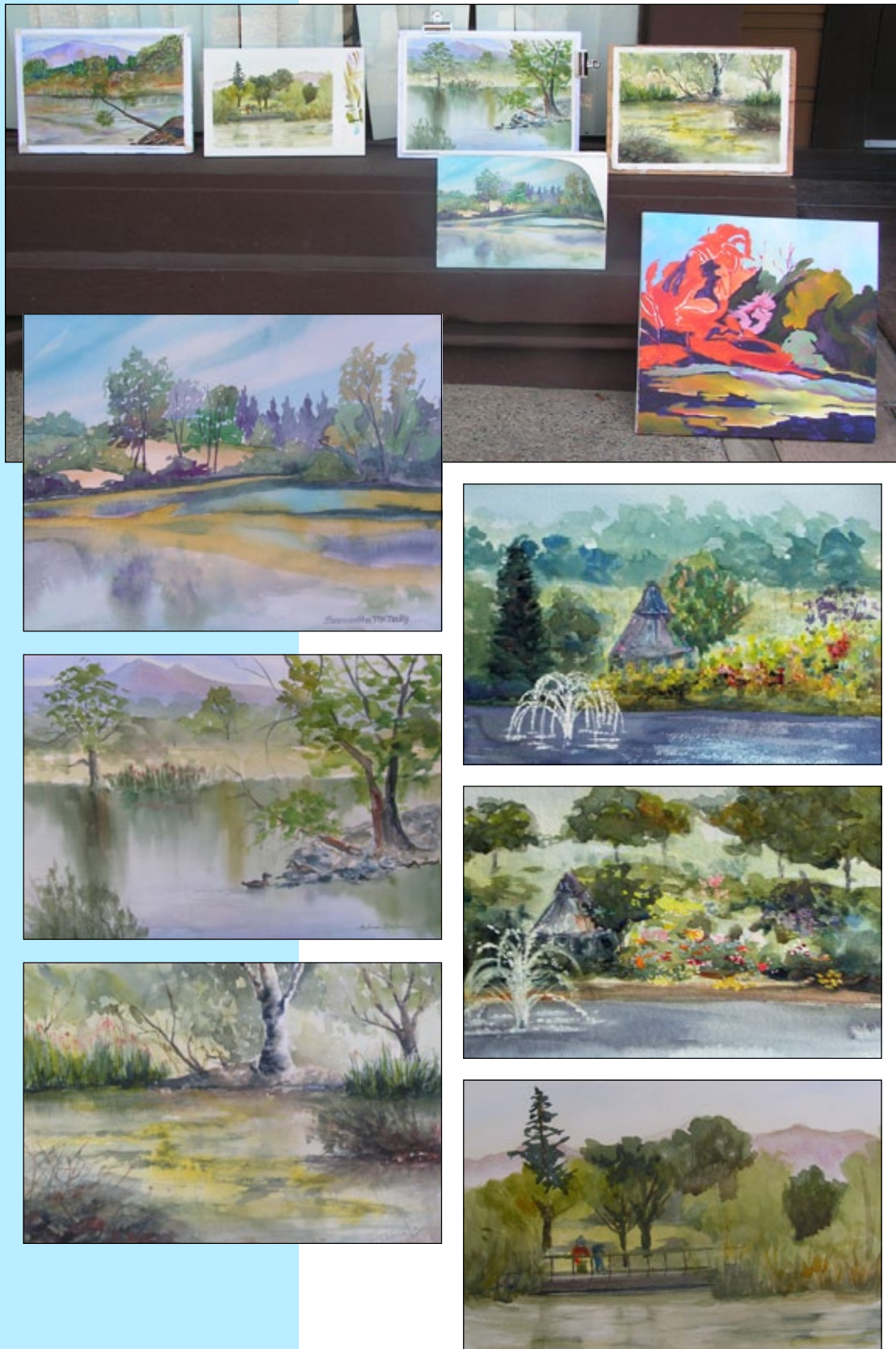
## Algae and Wind Challenge Painters

By *Andrea Baron*

Eight CWA plein air painters met at Heather Farm Park, the largest community park in Walnut Creek, on Saturday, June 21. Most chose to paint the riparian nature area, which featured many ducks and a mucky algae. A more-than-slight breeze kept us on our toes, and equipment that wasn't weighted down was subject to flights of fancy. It was fun to see how different artists addressed the challenges of the greenish-yellow algae floating on the water.

### Painters included:

Theresa Lo,  
Jo Ann McMahon,  
Sharon Hopkins,  
Andrea Baron,  
Brian Rusnak,  
Samantha McNally,  
Sara Kahn, and  
Carol Husslein.



# workshop corner

## **Karen Frey Workshop**

Karen Frey will be teaching "Eat, Sleep, Paint"; a workshop at La Romita in the beautiful Umbrian region of Italy from May 4 - May 18, 2015. Our focus will be on both painting en plein aire and developing a sketchbook. For more information contact Karen Frey at blumule@att.net or (510) 652-9837. To learn more about La Romita visit their website at laromita.org.

## **Michael Reardon**

Painting in Spain with Iain Stewart NWS and Michael Reardon AWS, NWS, CWA. Please join Iain and Michael as they team teach a workshop in a picturesque fishing village on the Costa Brava, just north of Barcelona. The dates are May 18-25, 2015. This is a truly unique opportunity to improve your watercolor painting with two award-winning watercolor artists, not to mention having a memorable painting holiday in Spain. For more information, contact Jackie Grandchamps at contact@frenchescapade.com.

**Join Elaine Frenett and Jean Warren** for the Fifth Annual Women's Journaling Retreat, September 7 - 12, 2014 at Lake Alpine, near Bear Valley in the California Sierras. We hike this artist inspired wilderness area, journal and paint en plein air. Our theme this year, 'New Directions', promises to push our creativity to new heights! Cabin lodging, all meals, and instruction included.

Elaine - (541) 944-2196; Jean - (707) 875-9240.

For details: <http://visualartjournaling.wordpress.com>

## **WASCO Has Two Workshops in October 2015 with World Renown Watercolor Artist Jean Haines**

Jean has requested that you take only one of these workshops since they are duplicates and she wants to give as many a chance as possible - so we are only accepting entry into one workshop per person. We are so honored to have Jean and we do have an exclusive in California for 2015 - if you don't take it here you may have to make a trip to the East Coast or England.

Dates: Workshop 1 - October 6 & 7, 2015

Workshop 2 - October 9 & 10, 2015

Demonstration and Book Signing October 8, 2015 at  
Luther Burbank Art & Garden Center  
2050 Yulupa Avenue, Santa Rosa, CA at 1 pm

For more information you call Joan Wale  
(707) 433-6714 or  
email [mjwale@aol.com](mailto:mjwale@aol.com)

## **Mira M. White Fall Classes:**

### **Abstracting The Figure with Acrylics/Mixed Media**

Sept. 15-Nov. 3, Mon. evenings 7:00-10:00pm (Tentative schedule)  
Art Studio, Room 16, Meher Schools, 999 Leland Dr. Lafayette  
Pre-register: [MiraMwhite@earthlink.net](mailto:MiraMwhite@earthlink.net), (925) 947-5773  
Tuition: \$250 (8 meetings) (enrollment limited to 8)

### **All About Drawing! : Classical & Contemporary**

Sept. 18-Nov. 20, Thurs. 9:00am-12 noon  
Walnut Creek Civic Arts at Shadelands, Wiget Lane, Walnut Creek  
Pre-register: (925) 943-5846, [www.arts-ed.org](http://www.arts-ed.org)  
Tuition: \$172 (10 meetings)

### **Mix Those Media! ( Dry & Wet Color Media)**

Sept. 19-Nov. 21, Fri. 9:00am-12:00 noon  
Walnut Creek Civic Arts at Shadelands, Wiget Lane, Walnut Creek  
Pre-register: (925) 943-5846, [www.arts-ed.org](http://www.arts-ed.org)  
Tuition: \$172 (10 meetings)

### **Stunning Soft Pastels!**

Sept. 16-Nov. 18, Tues. 1:00-4:00pm (no class Nov. 11)  
Walnut Creek Civic Arts at Shadelands, Wiget Lane, Walnut Creek  
Pre-register: (925) 943-5846, [www.arts-ed.org](http://www.arts-ed.org)  
Tuition: \$157 (9 meetings)

### **Watercolor: Loose & Luminous! (All Levels)**

Sept. 15-Nov. ???, Mon. 9:30am -12:30 pm  
Lafayette Studio, 1136 K, Saranap, Walnut Creek  
Pre-register: (925) 947-5773 (enrollment limited to 8)  
Tuition: \$250 (8 meetings)

Sept. 10-Oct. 29, 10:00am-1:00pm

Richmond Art Center, 2540 Barrett Ave., Richmond  
Pre-register: (510) 620-6772, [www.therac.org](http://www.therac.org)  
Tuition: RAC Member \$ 194/Non Member \$ 215

Sept. 10-Oct.29 , 6:30-9:30pm

Studio One Art Center, 365 45th St., Oakland  
Pre-register: (510) 597-5027  
Tuition: TBA (8 meetings)

### **Advanced Painting Seminar: All Media Discussion & Critique**

Sept. 21, Oct. 19, Sun. 10:00am-1:00pm  
Lafayette Studio, 1136 K, Saranap, Walnut Creek  
Pre-register: (925) 947-5773, [miraMwhite@earthlink.net](mailto:miraMwhite@earthlink.net)  
Tuition: \$100

### **Abstract Landscape With Soft Pastel: Inside and On Location**

October 4-5, Sat. and Sun. 9:30am-4:30pm  
Mendocino Art Center, Little Lake St. Mendocino  
Materials List: [www.miraMwhite.com](http://www.miraMwhite.com) (click on workshops)  
Register: [www.mendocinoartcenter.org](http://www.mendocinoartcenter.org)  
Tuition: MAC Member \$207/Non Member \$230

### **Encaustic Intensive: Melted Wax and Mixed Media Techniques**

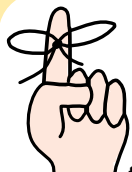
Nov. 1,2,3, Sat., Sun., Mon. 10:00am-4:00pm  
Epperson Gallery, 1400 Pomona St., Crockett  
Tuition: \$375 (Includes many materials)  
Materials List: [www.miraMwhite.com](http://www.miraMwhite.com) (click on workshops)



# CWA 2014 CALENDAR

## CWA MEETINGS & DEMOS

January 15	Gary Bukovnik
February 19	Judy Morris
March 19	Robin Purcell
April 16	David Savellano
May 12	Juanita Hagberg (2nd Monday in May)
June 18	<b>NO MEETING</b>
July 16	Stan Miller
August 20	Melissa Adkison
September 17	Dick Cole
October 15	Dorcas Moulton
November 19	Sal Valencia



**Plan ahead!**

Submissions for the newsletter must be received by the 15th of the month prior to publication!

**September Newsletter  
Deadline is August 15th.**

Send to [newsletter@californiawatercolor.org](mailto:newsletter@californiawatercolor.org)

## CWA Member Shows

**John Muir**  
Exhibit is open  
Pick up August 12 - 5 PM

**Alta Bates**  
Exhibit is open  
Pick up August 23 10 - 1

**Alameda Library**  
August 31 - September 28  
Submission due August 30  
Drop off August 31 9-11  
Pickup September 28 9-1  
Reception Wednesday,  
September 3 6- 8 PM

**Boundary Oaks**  
Exact dates to be determined  
tentatively October - December  
More information to come.

## CWA WORKSHOPS

February 17-21	Judy Morris
April 17-19	David Savellano
June 19-21	Mary Whyte
July 14-18	Stan Miller
August 14-16	Jeanne Vodden
September 15-18	Dick Cole

## CWA PLEIN AIR DAYS

March 15	Stowe Lake
April 4 (Friday)	Blake Garden
April 19	Baker Beach
May 17	Briones Park
June 21	Heather Farms
July 19	Rodeo Beach
August 16	Santa Cruz
September 20	Half Moon Bay
October 18	Lake Chabot



Photos of Paint Outs, CWA show winners, and Monthly Demos are on [www.facebook.com/californiawatercolor](http://www.facebook.com/californiawatercolor)