



January 2015

California WATERCOLOR Association

General Meeting • 7:30pm, Wednesday, January 21, 2015 • Shadelands Center, 111 N. Wiget Lane, Walnut Creek, CA

Leslie Wilson CWA, January Guest Artist



Majestic Mount Diablo by Leslie Wilson

Leslie Wilson is a watercolor artist offering original watercolor paintings and commissions, including landscapes, still life and figures in an impressionistic style. Art has always been fundamental in her life. She has focused on watercolor painting for more than 25 years, capturing the moment in vibrant light and color, both en plein air and in the studio. She loves transforming the ordinary into the extraordinary and reminding people of the places they have been, the people they have met, and the truly remarkable light and color in our world.

Leslie has a B.A. in Secondary Art Education from the University of Maryland. Recent recognition includes a 1st Place for "Majestic Mount Diablo" in the 2014 Walnut Creek Paint Out.

Published:

North Light Books, *Splash 11*, Spring 2010
"The Other Side of the Mountain"

Ongoing Watercolor Classes:

Continuing watercolor classes – Lafayette
Wednesdays, 9:30am-12:30pm
Call or email for schedule

Civic Arts Education – Walnut Creek
Wednesdays, 2:00pm-5:00pm
Fridays, 1:00pm-4:00pm
<http://tinyurl.com/mangdyt>

Art Exploration Class (Open to Seniors)
Valley High School, Dublin
Mondays, 3:00pm-5:00pm
7-week sessions
(Fall, Winter and Spring)
<http://tinyurl.com/kz8heaf>

Contact Info:

Leslie Wilson Watercolors
Walnut Creek, California
(925) 935-7529
lesliewilson@lesliewilson.net
www.lesliewilson.net



contents

2	From the President
3	CWA Workshops
4	Member News Workshop Corner
5	Directors Committees Staff 45th National Show
6	Dear Elizabeth
7	Sponsorships Show News
8	Plein Air
9	Calendar

2015 CWA PLEIN AIR DAYS

The first plein air day is
scheduled for March.
Everyone is welcome.



newsletter deadline info

The deadline for placing items
in the February newsletter is the
15th of January.

Send articles and photos by disk,
email, fax or in writing to:

Patricia Rosa

newsletter@californiawatercolor.org
5499 Wilke Dr.
Concord, CA 94521
eFax: 413.375.1851

membership/ data manager

Mail all changes of address,
phone number and email to:

Anne Jacobson

cwa.data@gmail.com
c/o CWA P.O. Box 4631
Walnut Creek, CA 94596

monthly meetings

Meetings are held the third
Wednesday of each month
(except June and December)
at 7:30pm,

Shadelands Center

111 N. Wiget Lane
Walnut Creek, CA

(NW corner of Wiget Lane and
Ygnacio Valley Road).

cwa workshop info

Wendy Oliver

925.280.1944

June Hunt

510.520.3802

Anne Jacobson

510.339.6916

e-newsletter info

To receive this newsletter
electronically please send a note to
our Data Manager with the email
address at which you wish
to receive the newsletter.

from the president Commit = Pledge

Before you jump, in a flash, to the next page, please continue to read
my message. You won't be sorry, I promise you!

I know we are all committed to many things. We have long-term
commitments to our families, faith, friends, jobs and pets. We have
briefer commitments to cars, cell phones, art supplies and suppliers.
We may have very momentary commitments to hairstyles, fashion,
fragrance and diets.

Many of you have had a long-term commitment to be a member of
CWA. A section of you have a briefer commitment, volunteering on
the board and various committees. An even smaller portion of you
have had momentary commitments to specific events such as a few
hours to hang a show, serve at a reception, or receive art for a show.

Each of these commitment levels is crucial and greatly appreciated!
CWA needs your volunteerism at all of these levels to continue to
thrive and grow into the future. Believe me, every CWA department
will gladly accept your assistance. Never worry, offer your time and
we will use it! Just contact a committee member and ask what you
can do for your level of commitment.

Thank you for asking me to pledge myself to CWA as the 2015
president. I look forward to working with many of you this year!

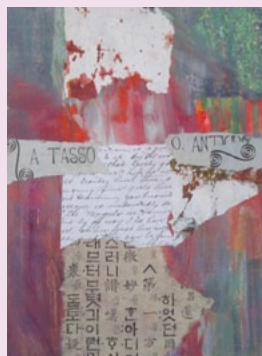
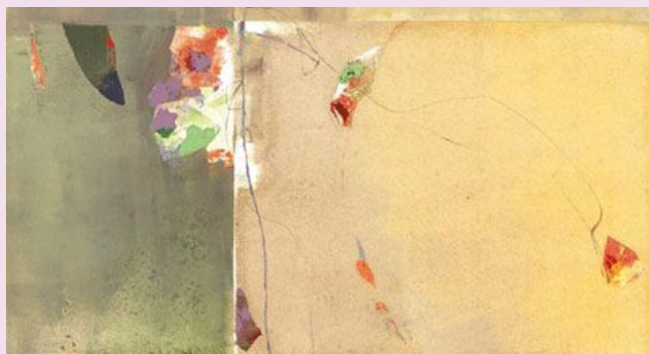


Sincerely,
Carol Husslein



2015 watercolor workshop series

California Watercolor Association



Katherine Chang Liu

5 Days | February 16-20

"Open Studio" Workshop | Intermediate/Advanced

CWA Members \$595, Non-Members \$650.

See Katherine's work at www.jenkinsjohnsongallery.com

The students who take Katherine's class keep coming back for more. Why? Because Katherine gives every artist a great deal of personalized attention. In fact, that is really what Katherine's classes are all about. This is Katherine's 3rd seminar for CWA in recent years, and the reason is that our members keep requesting her. Clearly not all great artists make good teachers, but Katherine certainly does. She was featured in the American Artist March 2008 article entitled Watercolor: 20 Great Watercolor Teachers: Biographies and Artwork.

Katherine has years of experience working with artists individually to help each painter develop his or her strengths and personal style. This approach is a major focus of the renowned Taos Intensive Studies Seminar (ISS), and Katherine is one of their key instructors. Ask previous CWA members who have studied with Katherine and you will get confirmation of the value of her workshop. Apparently some of her students refer to her as the "The Art Whisperer", a tribute to her ability to relate to each artist's ideas and strengths right away, and help in their development of those ideas.

Regarding her teaching philosophy, Katherine says that her preference and strength is to work with artists one on one. "I pay much attention to the observation of each artist's particular intent and ability in his work, and hopefully sort things out, and guide this artist's further development. Sometimes I suggest small adjustments, and other times I try to work with the artist to find the clarification of his content, and how he might best express that content".

Since this is an "open studio" workshop, each artist will bring the resource material and supplies most suitable for his or her own work. This is definitely not a "cookie-cutter" workshop!

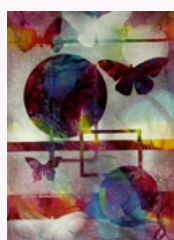
Joseph Zbukvic & Charles Reid 2015 Workshops are sold out!

Space available still at this time for:



Iain Stewart

3 days, July 16-18, Light in Watercolor,
All Levels – Members \$395



Mary Ann Beckwith

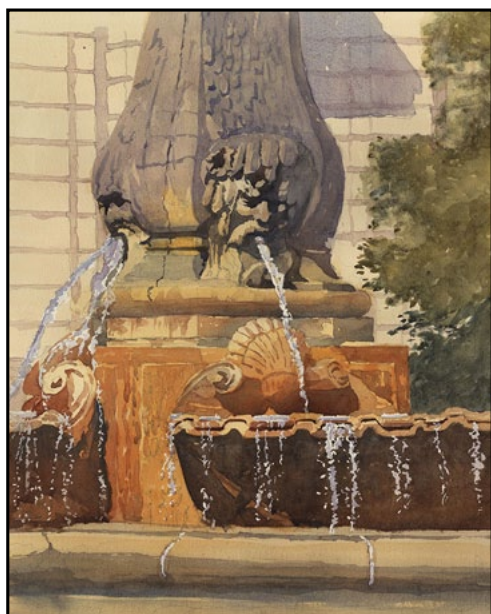
3 days, October 22-24,
Brush and Beyond,
All Levels
Members \$395

member news



ArtZ Vitamins by Irina Sztukowski

Irina Sztukowski's paintings from ArtZ Vitamins series attracted attention of G's Gourmet company from Ireland. As the result of co-operation with this company and GreenHouse designers' studio, several dozens of Irina's new watercolor paintings will be transformed into labels of tasty jams, relishes, and marmalade. Irina Sztukowski comments, "It is exciting to know that my hard work brought delicious fruits; and now my watercolors are literally ready to be served." www.artirina.com



Headwaters by Larry Cannon, CWA

Larry Cannon CWA will be exhibiting his watercolor titled "Headwaters" at the California Art Club's 104th Annual Gold Medal Exhibition to be held at the USC Fisher Museum of Art in Los Angeles from March 29 through April 19, 2015.

workshop corner

Carol Maddox

"Capturing the Green Heart of Italy" workshop at La Romita in the Umbrian Hills will be led by Carol Maddox and Lisa Guthrie. They invite you to paint and sketch along with them, following in the footsteps of Renaissance artists. This will be a 10-day session, August 21-31, 2015.

For more information, visit La Romita's website at www.laromita.org or call Carol at (925) 462-8866 or Lisa at (414) 461-1419.

Donald Davidson Class

Botanical Illustration of Desert Flora, Course Number:ART X454.5
March 20-22, 2015

Learn how to draw artistic and realistic flowering plants in a manner designed to understand the form, function, and identification of native plants. Exciting hands-on experience both in the lab and in the field amid native flora habitats. Techniques in pencil, pen, and watercolor:
Schedule: This field study is based at the Desert Studies Center (of California State University) located within the Preserve at Soda Springs (Zzyzx), about an hour outside Las Vegas, about a three-hour drive from Riverside. The course fee includes two nights' lodging at the Center

Contact David at (202) 744-3647 or donaldddepicts@msn.com
<http://www.nps.gov/plants/cw/watercolor/index.htm>

Tom Lynch – Watercolor Secrets Revealed

Hosted by WASCO March 16-20, 2015. The objective of the workshop is to show the vast range and flexibility of watercolor and to put emotion and conviction into painting by exploring and experimenting, and developing creativity of each individual. This 5 day workshop will be held at the 4-H foundation of Sonoma County on Commerce Blvd, Rohnert Park from 9:30 am to 4:30 pm daily

Level: Intermediate/Advanced

The cost is \$450.00. Payment due with entry.

Please call or email any time with questions:

dianaliebe03@yahoo.com or (707) 245-7512, (707) 739-7285

Karen Frey Workshop

Karen Frey will be teaching "Eat, Sleep, Paint"; a workshop at La Romita in the beautiful Umbrian region of Italy from May 4 - 18, 2015. Our focus will be on both painting en plein air and developing a sketchbook. For more information contact Karen Frey at blumule@att.net or (510) 652-9837. To learn more about La Romita visit their website at www.laromita.org.



board of directors

<i>president</i>	Carol Husslein 925.935.6779
<i>co-vice presidents/membership</i>	Sue Johnston 510.531.5471
	Robert Davidson 510.552.4924
<i>co-chairs california shows</i>	Liz Johnston 925.988.0450
	Unfilled
<i>co-directors of programs</i>	Marilyn Miller 925.631.6673
	Betsy Trtek 925.825.4371
<i>secretary</i>	Leslie Wilson 925.935.7529
<i>budget director</i>	Iretta Hunter 925.330.2988
<i>communications director</i>	Fatima Camiloza
<i>co-directors of workshops</i>	Wendy Oliver 925.280.1944
	Phyllis Brady 925.855.8532
<i>workshops assistants</i>	registrar: June Hunt 510.525.0965
	publicity: Anne Jacobson 510.339.6916
<i>co-directors of outreach</i>	Sheila Cain 510.845.0863
	Victoria Bianco 925.687.8675

staff

<i>membership/data manager</i>	Anne Jacobson
<i>newsletter editor</i>	Patricia Rosa
<i>bookkeeper</i>	Melissa Alva
<i>audio/visual set up</i>	Unfilled

volunteer committees

<i>national exhibition</i>	Ruth Miller
<i>community outreach</i>	Carol Smith
	Helene Yu-June Rice
	Mona Rivers-Vasquez
	Charlotte Huntley
	Deb Taylor
<i>mail distribution</i>	Sue Johnston
<i>hospitality</i>	Open, assistant: Open
<i>greeter</i>	Donna Gamel
<i>treasurer assistants</i>	Annette Hodtwalker
<i>video library</i>	Charlotte Morris*
	Terrie Moore
<i>plein air</i>	Samantha McNally
	Andrea Baron
<i>photographer</i>	Rolando Barrero
<i>panel rental</i>	Barb Bochenek*
	Pam Howett
<i>cwa webmaster</i>	Efrain Ibarra
<i>members at large</i>	Susan Scolnick
	Dmitry Grudsky

*Chair of committee

45TH NATIONAL EXHIBITION 2015

CALIFORNIA WATERCOLOR ASSOCIATION



Forks and Spoons by Anthony Rogone

CWA watercolor

JANUARY 15 - FEBRUARY 21
HARRINGTON GALLERY
4444 RAILROAD AVE.
PLEASANTON, CA

OPENING RECEPTION
JANUARY 15
6:00PM - 8:00PM*

**Come early to enjoy old town Pleasanton
and avoid the commute traffic*

Rose Hotel is walkable
Hyatt House is local

Dear Elizabeth...

Questions and answers about watercolor art

Risky Business...

I received a very interesting note from CWA member Valerie Cohen, (valeriepcohen.com). Valerie commented, “You write that watercolors are rarely seen in galleries or museums because ‘watercolor is an edgy medium.’ EDGY means tense, nervous, irritable, forefront of a trend, outside the limits, experimental, avant-garde.”

Cohen added “Let us consider the catalog for the NWS 2014/15 International Exhibition. Every painting is technically superb (perhaps too superb?), but their subjects are exactly the same as those I have seen, over many decades, in every show catalog. Most of those categories are horrible clichés. Where are the personal statements about the world we live in, the grief, politics, violence, climate-change, disease, racism, violence — or, alternatively, joy in the geomorphology of America?”

I was so interested in hearing more from Valerie that I began a correspondence with her. I explained that I believe because watercolor is on the edge of the traditional art world, an opportunity for innovative and experimental work exists. I do not take full advantage of that opportunity in part because of the demanding nature of the medium and in part (perhaps the greater part) because of the challenge. And yet, the best work seems to emerge when I mindfully step away from my most polished effects.

In looking for the leading edge in watercolor art, I am looking for painters who push the edges. I found many experimental, edgy,

or avant-garde watercolor paintings in the 2011 Tate Watercolour Exhibition in London. Jon Snow, British journalist, passionate watercolor painter and viewer of the exhibition provides a commentary. Snow acknowledges watercolor as a risky, dangerous medium as he strolls through the Tate galleries commenting on a few of his favorite paintings. Click on the You Tube address to view Snow’s commentary. I found watching the five-minute video to be time well spent.

Snow describes watercolor as the medium of the precise. I understand his meaning all too well. Watercolor can evoke meaning in the viewer with seemingly simple color washes. The openness and transparency of watercolor allows the viewer to construct or complete the image. To achieve such complex effects requires the artist to choose the precise amount of time, paint, and effort. The watercolor painter must say so much and no more, to stop painting at precisely the right moment. In my experience, stopping is easier said than done. Valerie added, “The goal is to simplify, to remove all unnecessary detail, yet to preserve form, design, and meaning. As my dear late friend Mildred Zornes said, ‘Stop before that last brush-stroke — better, stop before the last three brush-strokes!’ ”

As we organize the California shows for 2015, I believe at least one venue needs to have an emphasis on experimental or avant-garde work. Valerie might say that we need to encourage non-cliche work. You might try a new and disturbing subject; or, you might choose a subject you have often painted, one that you know and love, but paint it in a whole new way.

I would love to hear more comments from you, dear readers. How might we step out to explore the edges of watercolor.

In closing, for more information and a general description of the 2011 Tate Watercolour Exhibition go to: <http://watercolor.net/british-watercolours/>

Thanks for reading and send your watercolor questions to ejohns5513@aol.com.

sponsorships

The CWA newsletter is accepting ads from anyone who would like to be a sponsor of CWA. The newsletter is emailed monthly to all of our members. It is a very effective way to reach a large audience of artists. All CWA artists paint with watercolors, but not exclusively. Many members also paint in oils, acrylic and pastels.

We are offering the following sponsor packages that reflect available advertising space. All ads, except Classified, run for a minimum of 3 months and are payable in advance. A 10% discount is available to CWA members, members also get classified ads for free. Deadline for insertion is the 10th of each month prior to publication (ie, Feb. 10 for the Mar. newsletter).

Formats accepted are digital or camera-ready artwork. Images should be scanned at 300 dpi. File format preferred is PDF, but we can accept JPG, TIFF, EPS files. All ads will appear in black and white in the print version, and in color in the email version.

Contact Patricia Rosa at
newsletter@californiawatercolor.org
or 925.348.1120 for further information.

sponsor levels

Distinguished Donor

Full Page/7.5 x 10
3 months: \$750
12 months: \$3000

Benefactor

Half Page/7.5 x 5
3 months: \$450
12 months: \$1800

Fellowship

Third Page/7.5 x 3.25
3 months: \$360
12 months: \$1440

Patron

Quarter Page/3.75 x 5 (vert)
3 months: \$240
12 months: \$960

Friend

Eighth Page/3.75 x 2.5 (hrz)
3 months: \$180
12 months: \$720

Classified

text only: approximately 400 characters,
including spaces. \$50/month (free to CWA
members and non-profit organizations)

show news

Call for Entries – Sebastapol Center for the Arts “PEOPLES”

February 27 - March 29, 2015 | Intake submissions: January 26

Juror: Jenny Lynn Hall

We are calling for artwork ranging from pure representation of the body to the essence of human experience (i.e. reflected through activity or emotions). “Peoples” includes the opportunity to share work about cultures and humanity in all its’ forms and is open to all media. To apply online, go to www.entrythingy.com

“PALATES TO PALETTES”

April 3 - May 2 | Intake submissions: March 2

It’s all about food! Glorious food? Survival, indulgence or self destruction? The practice of depicting food and feasting stretches back to antiquity. Through the ages it has continuously been used as skillful observation and/or to share symbolic meaning. All media will be accepted but heavily scented or decaying material should be presented by video or film or in a clear airtight display cabinet. To apply online go to www.entrythingy.com

Art Squared

All Gallery Group Show by The Artists of Viewpoints Gallery (Including CWA Members Veronica Gross, Floy Zittin and Jan Grady)

Exhibits runs January 8-30, 2015

The artists of Viewpoints Gallery celebrate the new year, 2015, with an all gallery group show. The fifteen local artists of Viewpoints Gallery exhibit individual interpretations of Art Squared in oils, watercolor, pastels, mixed media, and ceramics. www.viewpointsgallery.com

Missing Email?

Are You Missing Your Email? Did You Add CWA to Your Personal Contacts?

If you think you are missing CWA email, please start by putting CWA addresses into your personal contacts. The most commonly used email addresses are: datamanager@californiawatercolor.org, national@californiawatercolor.org, membership@californiawatercolor.org and cwa.data@gmail.com. This will help to keep your newsletters and other CWA communications from going astray.

If you can, add @californiawatercolor.org to your Safe-Senders list. If you don’t know how, check the webpage below from Constant Contact.

- You can allow mail from specific email addresses to safely come into your inbox without it being placed in your junk or spam folder by “white-listing” email addresses within your email client or Internet security software and adding email addresses to a safe senders list
- Check this Constant Contact webpage for tricks to work through individual ISPs: <http://support2.constantcontact.com/articles/FAQ/2753>. All the major providers like AT&T, Earthlink, AOL, Verizon, Gmail, Comcast and Yahoo are covered.

Remember to check your spam folders regularly. we send the messages out but we need your help to make sure they get through. If you are getting our messages, please read them!

Take a Sneak Peek at 2015 Plein Air Activities

plein air corner

As 2014 draws to a close, the plein air committee is gearing up for a great 2015 season.

Here are some changes to expect:

- Andrea Baron will join Samantha McNally as co-chair.
- Instead of an open group meeting in January to pick the painting locales, Andrea and Sam will coordinate locales based on previous group favorites. They will aim for locales that are diverse yet close to home. If you have a locale to recommend, please send an email to Andrea (pleinair@californiawatercolor.org) by January 15 with the locale name, address, and best time of year to paint in that area.
- Previously, most plein air meet ups were on Saturday in the week of the CWA monthly meeting. As CWA has added more weekend workshops, it makes sense to coordinate and change some of the plein air days. To that end, some Fridays, Sundays, and alternate Saturdays will be added to the schedule. Hopefully, this will encourage workshop attendees to also join some of the plein air days.

So be on the lookout for a listing of plein air days, which will be posted on the CWA website by the February meeting. The first plein air day is scheduled for March. Everyone is welcome. Hope to see you there.



CWA 2015 CALENDAR

CWA MEETINGS & DEMOS

January 21, 2015 Leslie Wilson

February 18, 2015 Katherine Chang Liu

March 18, 2015 Joyce Faulknor
and Guy Magallanes

April 15, 2015 Member White Elephant

May 20, 2015 John Finger

June 2015 **NO MEETING**

July 15, 2015 Iain Stewart

August 19, 2015 **TBD**

September 16, 2015 Joseph Zbukvic

October 21, 2015 Mary Ann Beckwith

November 18, 2015 Carol Maddox

December 2015 **NO MEETING**

2015 CWA WORKSHOPS

February 16-20 Katherine Chang Liu

April 20-24 Charles Reid
Session 1

April 27-May 5 Charles Reid
Session 2

July 16-18 Iain Stewart

September 14-16 Joseph Zbukvic
Session 1 (EB)

September 18-20 Joseph Zbukvic
Session 2 (SF)

October 22-24 Mary Ann Beckwith

2015 CWA PLEIN AIR DAYS

The first plein air day is
scheduled for March.
Everyone is welcome.



Plan ahead!

Submissions for the
newsletter must be
received by the 15th of
the month prior to publication!

February Newsletter

Deadline is January 15th.

Send to newsletter@californiawatercolor.org

CWA Member Shows

Boundary Oak

October 16 - December 18, 2014
3800 Valley Vista Road
Walnut Creek, CA 94598

Pickup:

Saturday, January 3
11:00am - noon

Chairperson:

JoAnn McMahon
(510) 848-1207
joannm1@me.com

Juror:

Dorcas Moulton

Lindsay Dirkx Brown

Art Gallery

January 5 - 30, 2015

Reception:

Saturday, January 10
2:00pm - 4:00pm

Drop Off:

Monday, January 5, 2015
10:00am - 2:00pm

Pickup:

Friday, January 30, 2015
2:00pm - 4:00pm

John Muir

Medical Center

August 29 - October 9, 2015

Drop Off:

Saturday, August 29, 2015
9:00am - 11:00am

Pickup:

Friday, October 9, 2015
2:00pm - 4:00pm



Photos of Paint Outs, CWA show winners, and Monthly
Demos are on www.facebook.com/californiawatercolor