



June 2015

California WATERCOLOR Association

No Meeting in June • Happy Painting • Shadelands Center, 111 N. Wiget Lane, Walnut Creek, CA

contents

2
From the President

3-4
CWA Workshops

5
Member News

6
Directors
Committees
Staff
Volunteer Bucks

7
Dear Elizabeth

8
Sponsorships
Show News

9
Plein Air Corner

10
Workshop Corner
Artist Opportunities
Artist Getaways

11
Calendar

PLEIN AIR

Come paint with us
June 12

at Sycamore Grove,
Livermore
(Wetmore entrance)

and June 20
at Sonoma Cornerstone,
Sonoma

For details, go to:
www.californiawatercolor.org
on the plein air page.

Call for Entries CWA's 46th National Exhibition



Butch & Roy by Dick Cole

Venue:

Academy of Art University, S.F.

Dates:

January 4 - February 28, 2016

Entry Deadline:

September 1, 2015

Awards Juror:

Dick Cole

Prospectus:

www.californiawatercolor.org

To enter, register or log in to your personal profile



newsletter deadline info

The deadline for placing items
in the July newsletter is the
15th of June.

Send articles and photos by disk,
email, fax or in writing to:

Patricia Rosa

newsletter@californiawatercolor.org

5499 Wilke Dr.

Concord, CA 94521

eFax: 413.375.1851

membership/ data manager

Mail all changes of address,
phone number and email to:

Anne Jacobson

cwa.data@gmail.com

c/o CWA P.O. Box 4631

Walnut Creek, CA 94596

monthly meetings

Meetings are held the third
Wednesday of each month
(except June and December)
at 7:30pm,

Shadelands Center

111 N. Wiget Lane

Walnut Creek, CA

(NW corner of Wiget Lane and
Ygnacio Valley Road).

cwa workshop info

Wendy Oliver

925.280.1944

June Hunt

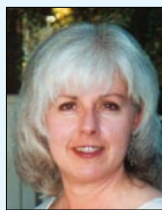
510.520.3802

Anne Jacobson

510.339.6916

e-newsletter info

To receive this newsletter
electronically please send a note to
our Data Manager with the email
address at which you wish
to receive the newsletter.



from the president June 1975 – Forty Years Ago

We all remember certain times in
our lives, for many reasons.

The movie, Jaws opened in theaters
and made people afraid to swim in
the ocean.

You might have seen something
on the news over and over again
like President Ford falling on the
Air Force One stairway.

Former actor and California
Governor Ronald Reagan filed
papers declaring his intent to run
for President.



In June of 1975 the first drive through restaurant was inaugurated.
Maybe you graduated from high school in June 1975!

What matters to all of us is that our association was incorporated
on June 13, 1975 as East Bay Watercolor Society. In 1996 the
name was changed to California Watercolor Association (CWA).

The first executive board members were:

Charlotte Panton, Peggy Humphries, Barbara Luebke, Ruth Haase,
Nancy Havas, Ned Dodds and Shirley Nootbaar.

Charlotte Panton and Shirley Nootbaar continue as members of
CWA.

Happy 40th Birthday CWA!

Sincerely,
Carol Husslein



2015 watercolor workshop series

California Watercolor Association



Workshop Report:

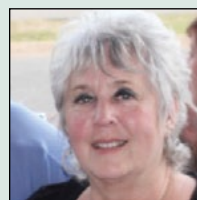
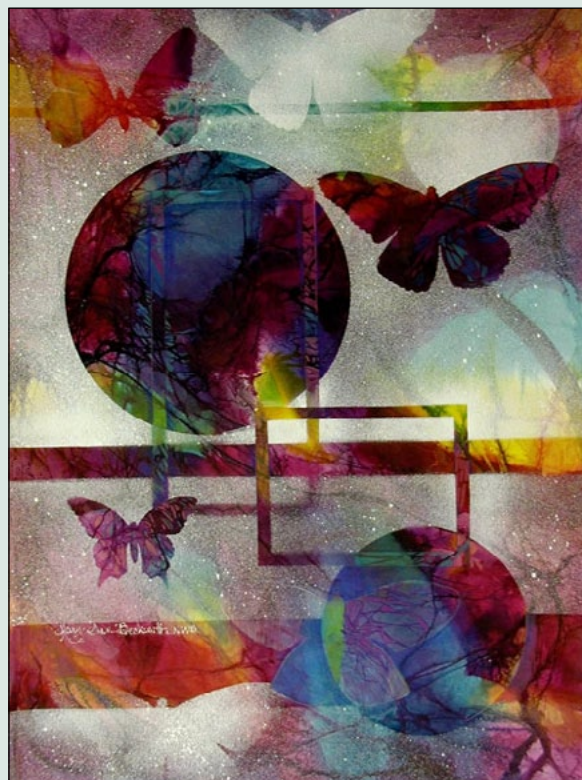
We just had 2 great weeks of workshops with Charles Reid. These popular workshops included 2 days with live models, a plein air day, as well as a choice of still life arrangements and historic photos with which to work.



Our next sold-out workshop in July is the Iain Stewart, master of capturing light in watercolor. We will have photos from that workshop in the August Newsletter.

The only 2015 workshop still available for sign-ups is the Mary Ann Beckwith, October 22-24 | Brush and Beyond | All Levels

Mary Ann's workshop "Brush and Beyond" is an art-altering experience! The energy filled days explore creative methods of watermedia application, including the building layers with texturing and collage, and experimenting with new materials.



Mary Ann Beckwith,
AWS/NWS

3 Days | October 22-24,
Brush and Beyond | All Levels

Members \$395

Learn more about Mary Ann at
www.maryannbeckwith.org

member news



Third Autumn by Douglas Greer

Doug Greer's "Third Autumn" has been juried into the National Watercolor Society's 2015 Member Competition/Exhibition, June 6 - July 31, at the NWS Gallery in San Pedro, CA.

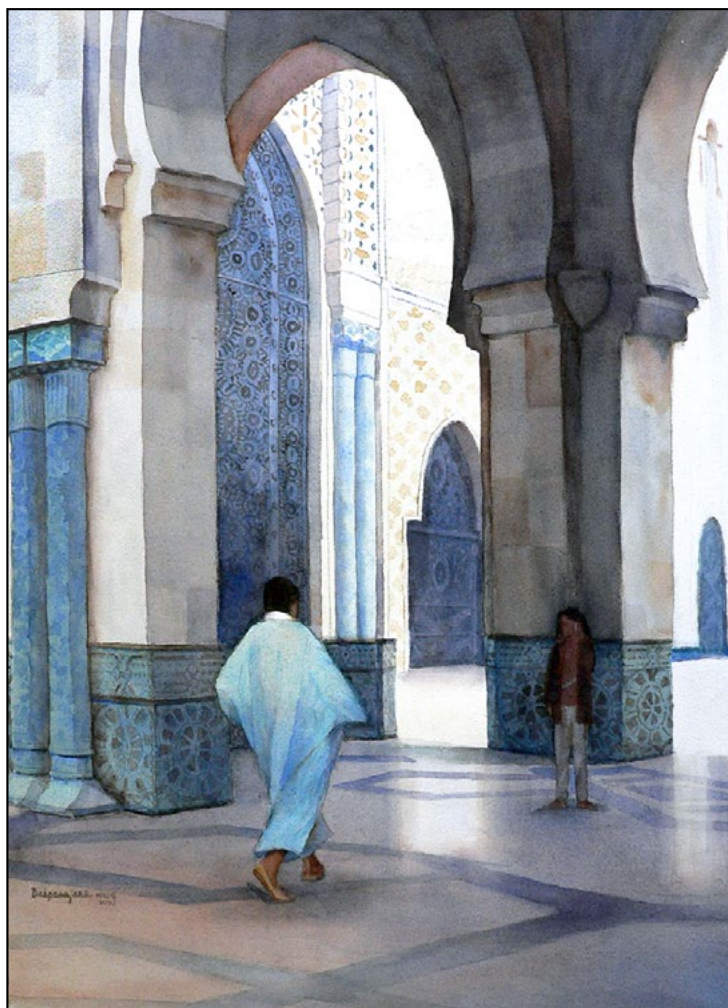


A Moment in Time Malibu by Larry Cannon

Larry Cannon, CWA will be exhibiting his watercolor "Malibu Lagoon" along with a second watercolor at On Location in Malibu 2015: Paintings by the California Art Club at the Frederick R. Weisman Museum of Art at Pepperdine University (Malibu). The exhibition will extend from May 23 through August 2.



A View From My Kitchen Window by Pat Dispenziere



Casablanca Mosque by Pat Dispenziere

Elaine Harvey awarded **Pat Dispenziere** Best of Show Award on her watercolor "Casablanca Mosque" and third place award on her watercolor "A View From my Kitchen Window" in the North County Society of Fine Arts Open Juried show at the Poway Center for Performing Arts, Poway, CA



board of directors

<i>president</i>	Carol Husslein 925.935.6779
<i>co-vice presidents/membership</i>	Sue Johnston 510.531.5471
	Robert Davidson 510.552.4924
<i>chair california shows</i>	Liz Johnston 925.988.0450
<i>co-directors of programs</i>	Marilyn Miller 925.631.6673
	Betsy Trtek 925.825.4371
<i>secretary</i>	Leslie Wilson 925.935.7529
<i>budget director</i>	Iretta Hunter 925.330.2988
<i>communications director</i>	Open
<i>co-directors of workshops</i>	Wendy Oliver 925.280.1944
	Phyllis Brady 925.855.8532
<i>workshops assistants</i>	registrar: June Hunt 510.525.0965
	publicity: Anne Jacobson 510.339.6916
<i>co-directors of outreach</i>	Sheila Cain 510.845.0863
	Victoria Bianco 925.687.8675

staff

<i>membership/data manager</i>	Anne Jacobson
<i>newsletter editor</i>	Patricia Rosa
<i>bookkeeper</i>	Melissa Alva
<i>audio/visual set up</i>	Unfilled

volunteer committees

<i>national exhibition</i>	Ruth Miller
<i>community outreach</i>	Carol Smith
	Helene Yu-June Rice
	Mona Rivers-Vasquez
	Charlotte Huntley
	Deb Taylor
<i>mail distribution</i>	Sue Johnston
<i>hospitality</i>	Open, assistant: Open
<i>greeter</i>	Donna Gamel
<i>treasurer assistants</i>	Annette Hodtwalker
<i>video library</i>	Charlotte Morris*
	Terrie Moore
<i>plein air</i>	Samantha McNally
	Andrea Baron
<i>photographer</i>	Rolando Barrero
<i>panel rental</i>	Barb Bochenek*
	Pam Howett
<i>cwa webmaster</i>	Efrain Ibarra
<i>members at large</i>	Susan Scolnick
	Dmitry Grudsky

*Chair of committee

Volunteer Value Bucks\$\$\$

Ever wonder about the benefits of Volunteering?

First and foremost it's the best way to get to know more about your organization and meet fellow artists, network and form new friendships.

Members **Sandra Morea** and **Susan Scolnick** realized that they had time to kill after class at Shadelands and decided to help out with the cookie table at our general meetings. Thanks to these two we now are able to offer sweet treats to our members. That gesture of good will allows members to meet and greet before each meeting begins. They will receive Volunteer Value Bucks for their time spent. **We VALUE our volunteers!!!**

Volunteers who helped with our National Exhibition this year were invited to visit Gary Bukovnik's studio/home, enjoy coffee and croissants, see his paintings and watch him paint. Not a bad perk for a few hours spent opening boxes of beautiful paintings. Volunteers received Volunteer Value Bucks. **We VALUE our Volunteers!!!**

One national volunteer was overheard saying "Best Breakfast Ever!" when attending a pre work brunch at Ruth Miller's house with the Juror of Awards as guest of honor. All Volunteers received Volunteer Value Bucks for the time they spent helping out. **We VALUE our volunteers!!!**

Volunteer **Juanita Hagberg** had a great time organizing our April Members **Art Mart**. It was such a success many members have already started a collection of items to sell at next years **Art Mart**. Thank you Juanita. Your Volunteer Value bucks are in the mail. **We VALUE our volunteers!!!**

SO... What are Volunteer Value Bucks and what do you do with them??? First off, for every hour you spend volunteering at any CWA event, you receive one buck.

What can you use Value Bucks on?

5 hours: Rent a display panel. (see Forms: Panel Rental for details)

30 hours: One CWA painters apron

60 hours: One years free membership

OR ... after 2 acceptances into our national exhibition, use 60 hours to apply to the equivalent of a 3rd acceptance and use to petition for signature membership

100 hours: \$75 credit toward the cost of CWA workshop registration (limited to one per year) Apply your credit to a workshop of your choice. First come first served.

SO.... What are you waiting for? Start volunteering, ask the chairperson of the event you are working on for a service hour slip (volunteer value bucks), save your bucks and put them to work for you. You'll be surprised how quickly they add up!

You can go to our website: californiawatercolor.org and click on Volunteering in the menu bar. Then click Rewards from the drop down menu to find out more. \$\$



Dear Elizabeth...

Questions and answers about watercolor art

Send your watercolor questions to ejohns5513@aol.com



John Marin – Sunset, 1922



John Marin – Lower Manhattan, 1920

Abstractions in Watercolor

I recently began to study John Marin, an early 20th century painter, who used watercolor as his primary medium. I see his paintings as energetic and energizing. The images are abstractions, playful and confident. The painting process is experimental and I think his work remains fresh and innovative today.

Some of Marin's innovations included abstracting landscapes and cityscapes to simple forms and expressive colors. The shapes are simple and direct, but I get the idea. I see the sun beaming down from heaven or the energy of the city. He combined materials and developed techniques for applying paints to develop unusual effects.

Marin experimented with stamps or syringes to apply paint. He created soft cloud forms with rubbings or smearing paint. He used charcoal line drawings or softened charcoal edges as part of the finished watercolor painting.

Sometimes, his work is framed with open white space around the edges of the painting rather than a mat. Alternatively, paintings might be surrounded with contrasting colors to enforce intensity. The whole surface of the painting is presented as the complete image. From time to time, he created a painted frame around the primary image, giving the viewer an impression of a framed and reframed painting.

As a starting point for my study, I found a Youtube presentation developed by The Art Institute of Chicago, where Marin's work was exhibited in

2011. Marin is credited as an influence on the Abstract Expressionist movement of the mid twentieth century. The presentation is over fourteen minutes long, which is lengthy but well worth the time. We see many paintings by Marin and demonstrations of how he might have achieved the effects.

Marin (1870-1953) showed his work at Alfred Steiglitz's gallery in New York and became very well known during his lifetime. We see his narrow, intense face gazing out at us in vintage photographs of Georgia O'Keeffe, Steiglitz, and others. He visited New Mexico, but spent most of his life as a productive artist in New York with summers in Maine.

I plan to explore some of Marin's techniques in my own work over the next few weeks. I would be interested in your thoughts. Please let me know dear reader, what you might think about John Marin.

sponsorships

The CWA newsletter is accepting ads from anyone who would like to be a sponsor of CWA. The newsletter is emailed monthly to all of our members. It is a very effective way to reach a large audience of artists. All CWA artists paint with watercolors, but not exclusively. Many members also paint in oils, acrylic and pastels.

We are offering the following sponsor packages that reflect available advertising space. All ads, except Classified, run for a minimum of 3 months and are payable in advance. A 10% discount is available to CWA members, members also get classified ads for free. Deadline for insertion is the 10th of each month prior to publication (ie, Feb. 10 for the Mar. newsletter).

Formats accepted are digital or camera-ready artwork. Images should be scanned at 300 dpi. File format preferred is PDF, but we can accept JPG, TIFF, EPS files. All ads will appear in black and white in the print version, and in color in the email version.

Contact Patricia Rosa at
newsletter@californiawatercolor.org
for further information.

sponsor levels

Distinguished Donor

Full Page/7.5 x 10
3 months: \$750
12 months: \$3000

Benefactor

Half Page/7.5 x 5
3 months: \$450
12 months: \$1800

Fellowship

Third Page/7.5 x 3.25
3 months: \$360
12 months: \$1440

Patron

Quarter Page/3.75 x 5 (vert)
3 months: \$240
12 months: \$960

Friend

Eighth Page/3.75 x 2.5 (hrz)
3 months: \$180
12 months: \$720

Classified

text only: approximately 400 characters,
including spaces. \$50/month (free to CWA
members and non-profit organizations)

show news

New Heron Hall Art Exhibit

Breathing Space – paintings by Susan R. Ball

On display May 1 through August 30, 2015

Heron Hall, Laguna Environmental Center, 900 Sanford Road, Santa Rosa, Ca.

This realism exhibit of both large and small format landscapes will feature oil paintings on canvas (linen), and boxed ink drawings (oak gall ink on true gesso, marble dust gesso on panel). For more information about this exhibit, and to read Susan's Artist Statement, visit the Laguna Environmental Center Art Exhibits webpage. Reward yourself by visiting this beautiful exhibit in Heron Hall Monday through Friday, 9am-5pm. Because of the variety of hall uses during the week, please call ahead to make sure you can view the art (707-527-9277, x107). Another great time to view the art exhibit is during our Second Saturday of the Month Open Houses 10am-3pm. Open Houses are FREE and open to the public. Proceeds of art sales benefit the Laguna de Santa Rosa Foundation, a non-profit 501(c)3 organization. The Laguna de Santa Rosa Foundation works to preserve and restore the Laguna de Santa Rosa and to educate the public about this Wetland of International Importance. For more information: www.lagunafoundation.org.



workshop corner

Mike Bailey– Christopher Schink–Myrna Wacknov 1 Model - 3 Fabulous Artists - 3 Points of View!

Saturday, July 18, 2015, 10:00am-2:30pm (Doors open 9:30am)
Los Altos Hills Town Hall, 26379 Fremont Rd., Los Altos Hills, Ca.

Join the Santa Clara Valley Watercolor Society for an unique experience. Watch Myrna Wacknov, AWS/NWS, Christopher Schink, publisher, "The Palette Magazine," and Mike Bailey, AWS/NWS paint portraits of the same clothed, live model. These nationally known artists will work for 2 hours in the morning with model breaks that allow time for the audience to get a closer look, mingle, and enjoy Hobee's famous coffee cake. At noon we break for a lunch of pizza, salad and drinks. In the afternoon each artist will give a 20 minute presentation explaining their individual approach to portraiture. There will also be time to interact with the artists and to visit the SCVWS exhibit "No Limits - Freedom to Create"

Tickets are \$25 for members, \$30 for nonmembers with lunch included in the ticket price. Tickets may be purchased online only by going to www.scvws.org. Use Paypal or a credit card. Members need to sign into the member's only section to get the member's price. Seating is limited. The reservation deadline is July 4. Get your tickets now!

A spectacular day of art in a wonderful setting!!

No Limits–Freedom to Create. Special Event in conjunction with the watermedia Art Show presented by the members of the Santa Clara Valley Watercolor Society and the town of Los Altos Hills. Los Altos Hills Town Hall, 26379 Fremont Road, Los Altos Hills, Ca. Special Event: 1 Model-3 Fabulous Artists-3 Points of View Saturday, July 18, 10:30-2:30. Purchase tickets online, www.scvws.org Exhibit runs: March 9-August 28, 2015. Exhibit hours: Monday- Friday, 8am-noon, 1-5pm. Open to the public.

Phone: 650-941-8073 www.scvws.org.



artist opportunities

Have Your Own Gallery Show at SCA

Sebastopol Center for the Arts offers Gallery II and Gallery III to individual artists, or small groups of artists, for exhibition of their work. The Visual Arts Committee reviews and selects artists for the Gallery II and Gallery III exhibits which are scheduled to run concurrent with exhibits in the Main Gallery.

We are now accepting applications for 2016

Deadline to apply is Friday June 27, 2015

www.sebarts.org

artist getaways

3rd Annual Artist Getaway in Murphys, California

June 7-12, 2015

Join a group of friendly pleinair artists of all levels of expertise on an Artist Getaway, a painting vacation.

Paint the Stanislaus River in Sourgrass, just past Big Trees Park, June 8-9, 2015 (During our stay in Murphys)

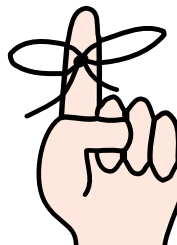
The Sourgrass Recreation Area provides ready access to the beautiful and untamed North Fork Stanislaus River, which has been determined to be eligible for listing as a national Wild and Scenic river. The complex includes a day use area with picnic tables, BBQs and restrooms, as well as a 49-site U.S. Forest Service campground known as Wa Ka Luu Hep Yoo.

See www.artistgetaway.com for details and registration.

Email info@artistgetaway.com

or call Samantha McNally at (415) 828-4991 evenings

Plan ahead!



Submissions for the newsletter must be received by the 15th of the month prior to publication!

**July Newsletter
Deadline is June 15th.**

Send to newsletter@californiawatercolor.org

CWA 2015 CALENDAR

CWA MEETINGS & DEMOS

January 21	Leslie Wilson
February 18,	Katherine Chang Liu
March 18	Joyce Faulkner and Guy Magallanes
April 15	Member White Elephant
May 20	John Finger
June	NO MEETING
July 15	Iain Stewart
August 19	Camille LaPonte-Lyons
September 16	Joseph Zbukvic
October 21	Mary Ann Beckwith
November 18	Carol Maddox
December	NO MEETING

CWA WORKSHOPS

February 16-20	Katherine Chang Liu
April 20-24	Charles Reid Session 1
April 27-May 5	Charles Reid Session 2
July 16-18	Iain Stewart
September 14-16	Joseph Zbukvic Session 1 (EB)
September 18-20	Joseph Zbukvic Session 2 (SF)
October 22-24	Mary Ann Beckwith

CWA PLEIN AIR DAYS

Sat., March 21	John Muir Historic Site, Martinez
Sat., April 11	Downtown Benicia
Fri., May 15	Blake Garden, Berkeley
Sat., May 23	Municipal Rose Garden, Oakland
Fri., June 12	Sycamore Grove (Wetmore entrance), Livermore
Sat., June 20	Sonoma Cornerstone, Sonoma
Sat., July 25	San Pablo Reservoir, El Sobrante
Sat., August 22	Angel Island, San Francisco
Sat., September 26	Borges Ranch, Walnut Creek
Fri., October 2	Sycamore Grove (Veteran's entrance), Livermore
Sat., October 17	Tilden Park/Jewel Lake, Berkeley



watercolor
CALIFORNIA WATERCOLOR ASSOCIATION

Our 2016 National Exhibition Needs a Receiving Venue

National is losing Bishop Ranch as our staging area. The building is coming down to make way for San Ramon's Community Center upgrade. I do not have a backup plan at the moment. This is where I need YOU. I would think in an organization as large as ours someone would have an idea, a connection, a realtor, something that would lead to space for a nonprofit group such as CWA. It could be a space we could lease for a month or two or one that that we'd happily accept on loan. The Bishop Ranch space was probably 1200-1600 sq. feet, but we can try to work with anything. Please get your creative minds working and see what you can come up with. Academy of Arts had been approached, but we were turned down on first request. Although I haven't given up yet! Tenacious to a fault!

Ruth Miller, National Director,
national@californiawatercolor.org

For details, go to:
www.californiawatercolor.org
on the plein air page.

CWA Member Shows

**John Muir
Medical Center**
August 29 - October 9, 2015

Drop Off:
Saturday, August 29, 2015
9:00am - 11:00am

Pickup:
Friday, October 9, 2015
2:00pm - 4:00pm



Photos of Paint Outs, CWA show winners, and Monthly
Demos are on www.facebook.com/californiawatercolor