



May 2015

# California WATERCOLOR Association

General Meeting • 7:30pm, Wednesday, May 20, 2015 • Shadelands Center, 111 N. Wiget Lane, Walnut Creek, CA

P.O. Box 4631  
Walnut Creek, CA 94596

www.californiawatercolor.org  
email: info@californiawatercolor.org

**contents**

- 2** From the President
- 3** CWA Workshops
- 4** Member News
- 5** Directors  
Committees  
Staff  
2016 National  
Exhibition Update

**6** Dear Elizabeth

**7** Sponsorships  
Show News

**8** Plein Air Corner

**9** Workshop Corner  
Artist Getaways

**10** Calendar

## John Finger May Demo Artist



John will speak about where he is at with watercolor after 40 years of working primary with watercolor and the demo will involve integrating line into his watercolor work.

As he demos he will talk about overcoming creative blocks, composition, materials and importantly time. Time is an important issue in watercolor and not discussed and thought about enough. So that will be the take away from his talk if all goes as planned.

Contra Costa County artist John Finger grew up in the Diablo Valley and graduated from the California College of the Arts in 1977. Since then John has been drawing and painting in both the commercial art world and the fine art world.

As a painter, John is best known for his watercolors, however much of his painting is in oil now. He has traveled extensively around the world visiting art centers and collections, drawing from the works of the masters at these sites, and sketching and painting areas of interest and natural beauty. Much of his art is landscapes and people though subject matter of all sorts interest and inspire him.

Although he does a lot of studio painting John sees his art as a way of being engaged with people and places and finds that drawing and painting on location as a way of being involved in the life going on around him.

John has taught painting and drawing classes and workshops at regional art centers around California. He also has taught design and illustration at Diablo Valley College in Pleasant Hill and at The Academy of Art College in San Francisco. He was president of the California Watercolor Association and was on the board of the San Francisco Society of Illustrators.

His website is at [www.fingerart.com](http://www.fingerart.com)



**PLEIN AIR**  
Come paint with us  
May 15  
at Blake Garden

For details, go to:  
[www.californiawatercolor.org](http://www.californiawatercolor.org)  
on the plein air page.



## newsletter deadline info

The deadline for placing items  
in the June newsletter is the  
15th of May.

Send articles and photos by disk,  
email, fax or in writing to:

**Patricia Rosa**

newsletter@californiawatercolor.org

5499 Wilke Dr.

Concord, CA 94521

eFax: 413.375.1851

## membership/ data manager

Mail all changes of address,  
phone number and email to:

**Anne Jacobson**

cwa.data@gmail.com

c/o CWA P.O. Box 4631

Walnut Creek, CA 94596

## monthly meetings

Meetings are held the third  
Wednesday of each month  
(except June and December)  
at 7:30pm,

**Shadelands Center**

111 N. Wiget Lane

Walnut Creek, CA

(NW corner of Wiget Lane and  
Ygnacio Valley Road).

## cwa workshop info

**Wendy Oliver**

925.280.1944

**June Hunt**

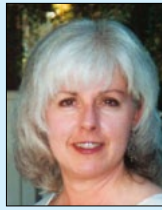
510.520.3802

**Anne Jacobson**

510.339.6916

## e-newsletter info

To receive this newsletter  
electronically please send a note to  
our Data Manager with the email  
address at which you wish  
to receive the newsletter.



# from the president Spring Cleaning, Artist Style



**By now our first CWA white elephant sale has completed and it was a huge success! Several of our members have spring cleaned their studios and are now ready for... what?!**

- Using the items **THEY** bought at the white elephant sale.
- Trying new techniques **THEY** learned at a workshop using new products **THEY** bought for a workshop.
- Using new materials **THEY** learned about at one of our general meeting demonstrations.
- All of the above because **THEY** checked out a video from our extensive video library.

We all need a spark to ignite our creativity sometimes  
and that is what CWA does for **ME!**

How about **YOU?**

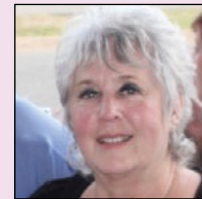
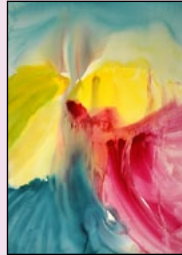
*Sincerely,*  
Carol Husslein





# 2015 watercolor workshop series

California Watercolor Association



*Mary Ann Beckwith,*  
*AWS/NWS*

3 Days | October 22-24,

Brush and Beyond | All Levels

Members \$395

Learn more about Mary Ann at  
[www.maryannbeckwith.org](http://www.maryannbeckwith.org)

## All 2015 workshops except our final one, Brush and Beyond, with Mary Ann Beckwith, are sold out.

Are you ready to try something completely different? Are you ready to work on your design skills or experiment with collage? All this and more is possible in our final workshop of the year with Mary Ann Beckwith, AWS/NWS. This class is intended for artists of all levels.

As a Full Professor twice selected for a Distinguished Teaching award, Mary Ann is an experienced educator of many years at Michigan Technological University, where she taught Painting, Design & Drawing classes. Developing the artistic skills of gifted students was her passion during her tenure at MTU and she continues to support the endeavors of all students of art.

She is the author of *Creative Watercolor: a Step-by-Step Guide and Showcase*. Her work has also been showcased in many articles in books and magazines.

She is a signature member of the American Watercolor Society, the National Watercolor Society, Watercolor USA, and, along with having signature status in many other societies, she is the Executive Director of the International Society of Experimental Artists. To learn more, check out her website at [www.maryannbeckwith.org](http://www.maryannbeckwith.org). Member price for this workshop is \$395.



# member news



Scarlet Ribbons by Juanita Hagberg



Uptown by Jan St. Onge

Carol Huslein's painting, "Good Fortune and Joy; Chinatown Lanterns," Juanita Hagberg's painting, "Scarlet Ribbons" and Jan St. Onge's painting, "Uptown" are included in the Fresh Works V Exhibition at Harrington Gallery, May 2 - June 6. Reception: May 2, 1 - 3. Firehouse Arts Center, Pleasanton, California.



Welcome by Diane Fujimoto

Diane Fujimoto invites you all to visit her booth at the upcoming Los Altos Rotary, Fine Art in the Park, the weekend of May 16-17. This annual art event takes place at Lincoln Park, the grassy area on the left of Foothill Expressway, going north towards Main St. Diane's booth (#190) is located at the far end of all the stands, toward Edith Ave, closer to the Foothill Expressway side. She will be featuring her latest work of watercolor batiks on Japanese rice paper. For more information, go to [www.dianefujimoto.com](http://www.dianefujimoto.com).

Valerie P. Cohen's painting, "Troubled Waters, Mono Lake," has been accepted into Northwest Watercolor Society's 75th International Open Exhibition, 2015, in Seattle WA.



Where Has All the Water Gone by Susan Ashley

Susan Ashley, CWA, wants to invite people to the Sun Gallery exhibition Troubled Waters - Drought and Change from April 22 to May 30, 2015. She had 3 artworks accepted. The image above is a watercolor on yupo, "Where Has All the Water Gone?" The image is 23h X 17 w.

The Troubled Waters Reception is Saturday, May 9 from 1:00-4:00pm. 1015 E Street, Hayward, CA.



## Cheng-Khee Chee Retrospective Exhibition

The University of Minnesota, Duluth Tweed Museum of Art is organizing Cheng-Khee Chee's retrospective exhibition "The Way of Cheng-Khee Chee, Paintings 1974-2014" ([www.d.umn.edu/tma](http://www.d.umn.edu/tma)) which will be held from May 12 through September 20, 2015. The Opening Reception will be on Thursday, May 14 at 6:00 - 8:00pm. This solo exhibition brings together 40 watercolor paintings created over the past 40 years (1974 - 2014), including Duluth Depot of 1974, the first painting Chee exhibited with the American Watercolor Society, as well as the monumental 100 Koi that the artist completed in late 2014. He has also authored two articles: "A Glimpse of the Asian Aesthetic," Ask the Experts Column, Artist's Magazine, March 2015 and "The Improvisational Splash Color Approach to Watercolor," Brush Up Column, Artist's Magazine, May 2015. ([www.chengkheechee.com](http://www.chengkheechee.com))



## board of directors

- president* **Carol Husslein** 925.935.6779  
*co-vice presidents/membership* **Sue Johnston** 510.531.5471  
**Robert Davidson** 510.552.4924  
*chair california shows* **Liz Johnston** 925.988.0450  
*co-directors of programs* **Marilyn Miller** 925.631.6673  
**Betsy Trtek** 925.825.4371  
*secretary* **Leslie Wilson** 925.935.7529  
*budget director* **Iretta Hunter** 925.330.2988  
*communications director* **Open**  
*co-directors of workshops* **Wendy Oliver** 925.280.1944  
**Phyllis Brady** 925.855.8532  
*workshops assistants* registrar: June Hunt 510.525.0965  
publicity: Anne Jacobson 510.339.6916  
*co-directors of outreach* **Sheila Cain** 510.845.0863  
**Victoria Bianco** 925.687.8675

## staff

- membership/data manager* Anne Jacobson  
*newsletter editor* Patricia Rosa  
*bookkeeper* Melissa Alva  
*audio/visual set up* Unfilled

## volunteer committees

- national exhibition* Ruth Miller  
*community outreach* Carol Smith  
Helene Yu-June Rice  
Mona Rivers-Vasquez  
Charlotte Huntley  
Deb Taylor  
*mail distribution* Sue Johnston  
*hospitality* Open, assistant: Open  
*greeter* Donna Gamel  
*treasurer assistants* Annette Hodtwalker  
*video library* Charlotte Morris\*  
Terrie Moore  
*plein air* Samantha McNally  
Andrea Baron  
*photographer* Rolando Barrero  
*panel rental* Barb Bochenek\*  
Pam Howett  
*cwa webmaster* Efrain Ibarra  
*members at large* Susan Scolnick  
Dmitry Grudsky

\*Chair of committee



**watercolor**  
CALIFORNIA WATERCOLOR ASSOCIATION

## Our 2016 National Exhibition Needs a Receiving Venue

National is losing Bishop Ranch as our staging area. The building is coming down to make way for San Ramon's Community Center upgrade. I do not have a backup plan at the moment. This is where I need YOU. I would think in an organization as large as ours someone would have an idea, a connection, a realtor, something that would lead to space for a nonprofit group such as CWA. It could be a space we could lease for a month or two or one that that we'd happily accept on loan. The Bishop Ranch space was probably 1200-1600 sq. feet, but we can try to work with anything. Please get your creative minds working and see what you can come up with. Academy of Arts had been approached, but we were turned down on first request. Although I haven't given up yet! Tenacious to a fault!

Ruth Miller, National Director,  
[national@californiawatercolor.org](mailto:national@californiawatercolor.org)

*Premier Destination Workshops*  
*Since 1983*  
**Art in the Mountains**  
*Call Today* **503-930-4572**

*Santa Barbara and San Diego CA - Venice, Italy - Alaska - Bend and Depoe Bay, OR - Salt Lake City, UT - San Antonio, TX*

**Alvaro Castagnet** **Nicholas Simmons**

*Class Outlines*  
*Biographies*  
*Travel Info*  
*World Class*  
*Instructors*

**Charles Reid**  
**Aimee Erickson**  
**Birgit O'Connor**  
**Karlyn Holman**  
**David Taylor**  
**Frank Eber**

**Mary Whyte** **Richard McKinley**

*Watercolor*  
*Acrylic*  
*Pastel*  
*Oil*

*Request Your Free Full-Color Brochure*  
[www.artinthemountains.com](http://www.artinthemountains.com) [info@artinthemountains.com](mailto:info@artinthemountains.com)



# Dear Elizabeth...

Questions and answers about watercolor art

Send your watercolor questions to [ejohns5513@aol.com](mailto:ejohns5513@aol.com)

## Hello everyone,

This month, we have a technical watercolor question from CWA member Sheila Cain, who asked “what is the granulation I see when I do a heavy wash in cobalt blue, cadmium red, and ultramarine blue?” and “What is going on/wrong when I try a wash over these pigments/colors?” Thanks for these great questions Sheila.

We probably want to start with a definition of granulation. Searching the Internet for granulation in watercolor, I learned the term refers to a technique that adds texture to a painting surface. Heavier paints, such as the cobalt blue, cadmium red and ultramarine blue that Sheila mentions in her question, contain inorganic elements that settle into the paper’s rough surface. Granulation can occur with transparent, semi-transparent or opaque paints.

Rough paper surface, dense color, and lots of water increase granulation effects. According to Daniel Smith, using ionized or distilled water also increases granulation. Mixing granulating paints with other colors can cause many special effects as the granulating paints may separate out. The separation can be unexpected and that is Sheila’s second question. “What is going on or wrong?” The answer is nothing is wrong; granulation has some interesting effects that might be used to great advantage.

I searched around for an example of granulation in watercolor painting and found a famous hare. If you look closely at Dürer’s painting of a rabbit, you will see granulation as part of the surface treatment. We see the rough, uneven fur and skin because Dürer handles the granulating texture so well. Working well with watercolor paints means understanding how far the media might stretch.

Watercolor paints that do not granulate will go on the paper smoothly and evenly. Dye based paints, such as phtahalo blues and greens are less likely to granulate. Another dimension in watercolor paint is transparency or opacity. Transparency means that the watercolor paint allows the whiteness of paper to shine through the color. All watercolor paints are transparent if mixed with enough water, but some paints are more opaque even though very vivid in hue. A transparent paint does not necessarily mean no granulation. Cobalt blue is transparent and yet also may produce granulating effects.

Adding more water to transparent colors means that more white paper will shine through the color. Using opaque watercolor paint will allow



Albrecht Dürer, Young Hare, 1502

the artist to cover the paper surface and the white paper is less likely to mediate paint color. Too much opaque color can deaden the feeling in a painting as most watercolor painters have experienced.

Clear, transparent color can add a lively feeling to paintings. Granulation can bring surface texture and opaque color can add depth. All of these paint qualities can all work well within a painting. Learning how to work with each of these special qualities can increase an artist’s range of expression. Learning to vary effects can add something to each new painting. Thanks to Sheila Cain for some great questions this month. And as always dear reader, I hope these notes on watercolor painting are helpful.

## sponsorships

The CWA newsletter is accepting ads from anyone who would like to be a sponsor of CWA. The newsletter is emailed monthly to all of our members. It is a very effective way to reach a large audience of artists. All CWA artists paint with watercolors, but not exclusively. Many members also paint in oils, acrylic and pastels.

We are offering the following sponsor packages that reflect available advertising space. All ads, except Classified, run for a minimum of 3 months and are payable in advance. A 10% discount is available to CWA members, members also get classified ads for free. Deadline for insertion is the 10th of each month prior to publication (ie, Feb. 10 for the Mar. newsletter).

Formats accepted are digital or camera-ready artwork. Images should be scanned at 300 dpi. File format preferred is PDF, but we can accept JPG, TIFF, EPS files. All ads will appear in black and white in the print version, and in color in the email version.

Contact Patricia Rosa at [newsletter@californiawatercolor.org](mailto:newsletter@californiawatercolor.org) for further information.

## sponsor levels

### Distinguished Donor

Full Page/7.5 x 10  
3 months: \$750  
12 months: \$3000

### Benefactor

Half Page/7.5 x 5  
3 months: \$450  
12 months: \$1800

### Fellowship

Third Page/7.5 x 3.25  
3 months: \$360  
12 months: \$1440

### Patron

Quarter Page/3.75 x 5 (vert)  
3 months: \$240  
12 months: \$960

### Friend

Eighth Page/3.75 x 2.5 (hrz)  
3 months: \$180  
12 months: \$720

### Classified

text only: approximately 400 characters, including spaces. \$50/month (free to CWA members and non-profit organizations)

## show news

### The Elk Grove Fine Arts Center is Hosting their 3rd Annual Open Fine Art Competition

Applications are open through May 9 online at [www.elkgrovetfineartscenter.org](http://www.elkgrovetfineartscenter.org). The following categories are: 1) Water Media; 2) Oil, Acrylic; 3) Pastel or Drawing; 4) Photography; and 5) Three Dimensional including Wood, Glass, Ceramic or Mixed Media. Judges this year are Yoshio Taylor and Jeff Kimbler. The public is invited to the free reception on June 6, and the show will continue through June 25. For more information, call (916) 685-5992 or email [egfinearts@frontiernet.net](mailto:egfinearts@frontiernet.net).

### CALL FOR ENTRIES

#### The Rocky Mountain National Watermedia (RMNW) exhibition

The Rocky Mountain National Watermedia (RMNW) exhibition, in its 42nd year, is presented by Foothills Art Center in Golden, Colorado. RMNW attracts entrants and jurors from throughout the United States, and is regarded as one of the top watermedia exhibitions in the country. This year's exhibition will take place September 19 - October 25, 2015. Foothills Art Center (FAC) selected nationally recognized artist, Mark E. Mehaffey, as the juror for the 2015 Rocky Mountain National Watermedia exhibition.

Mail-In Entry Submission Deadline: May 11, 2015

Online Entry Submission Deadline: May 25, 2015

Masters Workshop with Mark Mehaffey: August 4-6, 2015

\$350 public/ \$315 member

Download the prospectus at <http://tinyurl.com/onu4odw> to enter online now!

Visit [www.foothillsartcenter.org](http://www.foothillsartcenter.org) for more information!

### CALL FOR ART

#### Vacaville Art Gallery

38th Juried Art Show – June 6-July 4, 2015

Charge: members \$12; non-members \$15

Receiving: May 26-30

Reception: June 6, 6-8pm Public is welcome!

Call the Gallery at (707) 448-8712 or

email us at [gallery@vacavilleartgallery.org](mailto:gallery@vacavilleartgallery.org) for more information.

Visit our website to download the 38th Annual Juried Art Show Prospectus:

<http://vacavilleartgallery.org/call-to-artists/>

### SAVE THE DATE

#### Western Sonoma County Open Art Studios

June 6-7, June 13-14, 2015 (Saturday and Sunday) 10am-5pm

Sebastopol Center for the Arts sponsors the ever-popular open studio event the first two weekends in June. This is a great way to see and purchase fine art from hundreds of experienced and emerging artists, while traveling the scenic byways of western Sonoma County.

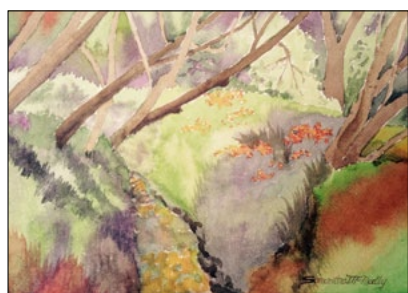
Go to [www.artatthesource.org](http://www.artatthesource.org) for more info.



# Great Weather, Like-Minded Friends— Plein Air at John Muir Historic Site



## plein air corner



The weather at the John Muir Historic Site in Martinez was sunny and warm with a slight breeze. The California poppies were in full bloom, as were other wildflowers on the nine acres of park grounds. Thirteen painters were in attendance: Samantha McNally, Andrea Baron, Brian Rusnak, David Savellano, Theresa Lo, Carol Husslein, Sara Kahn, Terri Anderson (her first time), Georganne Zaro-Eddy, JoAnn McMahon, Juanita Hagberg, Gina Koenig, and Marshall Lockman.

Everyone found something inspiring to paint, including the main house, some out buildings, and the carriage house. Some of the painters were serenaded by Juanita's husband Nils and his saxophone. We were also visited by a gentleman named Al, who seemed interested in joining CWA and was given a brochure and encouraged to paint with us next month.

Everyone enjoyed the time spent painting, and we're looking forward to two garden outings in May: Blake Garden in Berkeley on Friday, May 15, and Municipal Rose Garden in Oakland on Saturday, May 23. See the Website for further details and directions. Hope to see you there!

*Theresa Lo*



# workshop corner

## **The Sixth Annual Women's Art Discoveries Retreat**

Join Jean Warren & Elaine Frenett for wild watercolor techniques while connecting with nature at The Sixth Annual Women's Art Discoveries Retreat, Sept 13-18 at Lake Alpine in the Sierras. Expanding creativity – abstraction – mixed-media - and more! All-inclusive, meals, lodging; instruction! Join us for this magical, once in a lifetime workshop:

<http://tinyurl.com/15uwa7d>

Contact Elaine: (541) 944-2196

or Jean: (707) 875-9240

## **Darla Bostick's 8th Annual Ghost Ranch Workshop/Retreat 2015**

You are invited to Darla Bostick's 8th Annual Ghost Ranch Workshop/Retreat 2015 in Abiquiu, NM, October 4-10, 2015. Includes digital photography, watercolors/acrylics, pencil, incorporating text and mixed media work with opportunity for plein air painting and comfort of a group activity room (floor to ceiling vista views). For 7 days/6 nights you can relax, enjoy, and create. Lodging and meals included at Ghost Ranch property. The Georgia O'Keeffe Landscape Tour takes you where she painted from the magnificent area scenery. Visit the O'Keeffe studio/home on tour. Space is limited to 14 participants. Bring materials you love to work with (or try something new) and join us! The workshop fee is \$495. Room and board at the Ranch are per their rates. Unclaimed rooms will be released 1 September, but I may be able to get rooms after that date. Come and see for yourself why Georgia O'Keeffe loved Ghost Ranch!

For more details: [www.darlabostick.com](http://www.darlabostick.com)

Darla Bostick: (940) 320-5660

Email: [darlabostickart@gmail.com](mailto:darlabostickart@gmail.com)

## **Tom Jones**

### **Three Day Watercolor Workshop**

May 29, 30, 31, 2015

Held at the San Clemente Art Supply

San Clemente, California

Contact Patty Herdell at 949-369-6603

Email: [pherdell@scartsupply.com](mailto:pherdell@scartsupply.com)

Web Site: [www.scartsupply.com](http://www.scartsupply.com)

## **Tom Jones – The Red Barn Special at Madeline Island School of the Arts**

5-day workshop, June 22nd - 26th, 2015.

This is my first time teaching there, and I have heard nothing but the best about this Magical Island, and how MISA's facilities will make for the best possible workshop you will ever experience. Their on-site accommodations are built in the Mission Cottage Style, and are just the best. They are placed close to our studio and the Barn Dining Hall. This year they have a spring special for their new lodging during the month of June.

Madeline Island Campus

Surrounded by Lake Superior

[www.MadelineSchool.com](http://www.MadelineSchool.com)

A 25% deposit is all you need to hold your place in my workshop. To read more about my class and to register call the Registrar Brittany at (715) 747-2054 or email at [misa@cheqnet.net](mailto:misa@cheqnet.net)

To view more of Tom's works visit his

web site: [www.TomJonesArtist.com](http://www.TomJonesArtist.com)

Email: [Tom@TomJonesArtist.com](mailto:Tom@TomJonesArtist.com)

## artist getaways

### **Murphy**

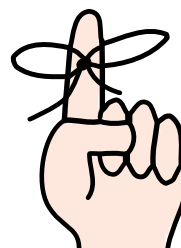
Paint the Stanislaus River in Sourgrass, while on an Artist Getaway in Murphy's CA.

June 7 – 12, 2015

See [www.artistgetaway.com](http://www.artistgetaway.com) for details and registration.

Email [info@artistgetaway.com](mailto:info@artistgetaway.com)

## Plan ahead!



Submissions for the newsletter must be received by the 15th of the month prior to publication!

**June Newsletter  
Deadline is May 15th.**

Send to [newsletter@californiawatercolor.org](mailto:newsletter@californiawatercolor.org)

# CWA 2015 CALENDAR

## CWA MEETINGS & DEMOS

January 21	Leslie Wilson
February 18,	Katherine Chang Liu
March 18	Joyce Faulknor and Guy Magallanes
April 15	Member White Elephant
<b>May 20</b>	<b>John Finger</b>
June	<b>NO MEETING</b>
July 15	Iain Stewart
August 19	Camille LaPonte-Lyons
September 16	Joseph Zbukvic
October 21	Mary Ann Beckwith
November 18	Carol Maddox
December	<b>NO MEETING</b>

## CWA WORKSHOPS

February 16-20	Katherine Chang Liu
April 20-24	Charles Reid Session 1
<b>April 27-May 5</b>	<b>Charles Reid</b> <b>Session 2</b>
July 16-18	Iain Stewart
September 14-16	Joseph Zbukvic Session 1 (EB)
September 18-20	Joseph Zbukvic Session 2 (SF)
October 22-24	Mary Ann Beckwith

## CWA PLEIN AIR DAYS

Sat., March 21	John Muir Historic Site, Martinez
Sat., April 11	Downtown Benicia
<b>Fri., May 15</b>	<b>Blake Garden, Berkeley</b>
<b>Sat., May 23</b>	<b>Municipal Rose Garden, Oakland</b>
Fri., June 12	Sycamore Grove (Wetmore entrance), Livermore
Sat., June 20	Sonoma Cornerstone, Sonoma
Sat., July 25	San Pablo Reservoir, El Sobrante
Sat., August 22	Angel Island, San Francisco
Sat., September 26	Borges Ranch, Walnut Creek
Fri., October 2	Sycamore Grove (Veteran's entrance), Livermore
Sat., October 17	Tilden Park/Jewel Lake, Berkeley

## Fresh Works

5th Annual Juried Exhibition—May 2 through June 6

Reception Saturday, May 2, 1:00-3:00 pm

HARRINGTON GALLERY at the FIREHOUSE ARTS CENTER

4444 Railroad Ave., Pleasanton (925) 931-4849



Artists: Jenny Balisle, Kaethe Bealer, Robin Bowes, Alyssa Casey, Lorelee Chapleau, Tehchi Chien, Jane Corich, Valerie Corvin, Barbara Daggett, Patricia Devitt, Marianne Eisberg, Sue Evans, Niloufar Farzam, Judy Feins, George Garbarino, Linda Garbarino, Anna George, Steffi Gross, Dmitry Grudsky, Juanita Hagberg, Sally Haig, Lynne Hall, Marian Sims Harris, Larry Hatfield, Susan Helmer, Marilyn Hill, Linda Hopwood, Jennifer Huber, Robert Huberman, Carol Husslein, Linda Sailors, Angela Johal, Marti Keeth, Kyong Ae Kim, Franki Kohler, Debbie Koone, Lisa Laird, Lorraine Lawson, Robyn Leimer, Vincent Liu, Amy Liu, Carolyn Lord, Ed Lucey, Peggy Magovern, Claudette McDermott, Ruth Miller, Maralyn Miller, Patty Montgomery, Rob Nye, Laura Ortiz-Spiegel, Denise Oyama Miller, David Pilosof, Rahul Prasad, Reagan Pufall, Grace Rankin, Carol Rienecker, Ron Rigge, Jill Stevenson Ritter, Mike Robles, Maria Grazia Romeo, Wes Rut, Andre Salvador, Tatiana Salvator, Holly Savas, Joyce Savre, Mario Scharmer, Jan St. Onge, John Trimmingham, Cecelia Wambach, Carolyn WarmSun, Julia Watson, Norma Webb, Doyle Wegner, and Kathryn Wills

### GALLERY HOURS:

Wednesday through  
Friday 12-5 pm  
Saturday 11 am to 3pm  
Gallery also open one  
hour prior to most  
theater events and  
during intermission  
Closed Sundays

Admission: Free;  
donations appreciated.

SPECIAL EVENT: Artful Bouquets-Saturday, May 9, 11 am—3 pm

In conjunction with 'The Big Draw' Downtown festival sponsored by Pleasanton Cultural Art Council, floral creations that emulate selected Fresh Works paintings will be on display in the gallery

For details, go to:

[www.californiawatercolor.org](http://www.californiawatercolor.org)

on the plein air page.

## CWA Member Shows

**John Muir  
Medical Center  
August 29 - October 9, 2015**

**Drop Off:**  
Saturday, August 29, 2015  
9:00am - 11:00am

**Pickup:**  
Friday, October 9, 2015  
2:00pm - 4:00pm



Photos of Paint Outs, CWA show winners, and Monthly Demos are on [www.facebook.com/californiawatercolor](http://www.facebook.com/californiawatercolor)