



November 2015

California WATERCOLOR Association

General Meeting • 7:30pm, Wednesday, November 18, 2015 • Shadelands Center, 111 N. Wiget Lane, Walnut Creek, CA

P.O. Box 4631
Walnut Creek, CA 94596

www.californiawatercolor.org
email: info@californiawatercolor.org

contents



- 1-2**
October Guest Artist
- 3**
From the President
- 4**
CWA Workshops
- 5**
Show News
- 6**
Member News
- 7**
CWA 46th National
- 8**
Directors, Staff,
& Committees
Workshop Corner
- 9-10**
Dear Elizabeth
- 11**
Sponsorships
Show News
- 12**
Plein Air Corner
- 13-15**
Outreach
- 16**
Calendar

November Guest Artist Linda Erfle



For the demonstration at the November general meeting, Linda Erfle will illustrate how to begin a painting with momentum and attempt to maintain that energy throughout. To aid her, she will begin by using the technique of painting wet-into-wet, or wet-into-damp, over the entire surface of the paper. Linda considers this approach to be one of the most important lessons she took away from a workshop with Cheng Khee Chee in Pleasanton, back in 1999.

Linda and husband, Bob, enjoy living in the foothills of the Sierra Nevada Mountains, east of Placerville, with family nearby. Art is not her only passion - cooking, gardening and masonry rockwork are additional creative outlets.

Possessing a life-long interest in art she has had the opportunity to seriously focus on painting since the early 90's, applying



watercolor or oil to render paintings in a representational style and exploring the essence of her subjects through the unifying elements of value, shape, edges and color - striving to convey how truly extraordinary the ordinary is which surrounds us.

Linda is a signature member of the National Watercolor Society and Watercolor West.

Watercolor Artist magazine will feature an article by Linda for their "Creativity Workshop" column in December of this year.

continued on page 2



Linda Erfle continued from page 1

Other publications that include her work are:

- Splash 17, by Northlight, 2016
- Splash 16, by Northlight, 2015
- Splash 15, by Northlight, 2014
- Splash 14, by Northlight, 2013
- Splash 11, by Northlight, 2010
- Watercolor Magazine, Winter 2007
- A Painters Guide to Design and Composition, by Margot Schulzke, 2006
- 100 Ways to Paint Still Life & Florals, by International Artists 2005
- International Artists Magazine, issue #24-April/May 2002
- The Best of Flower Painting, by Northlight Publications, 1997

Major exhibitions include:

- California Watercolor Association 45th Annual – 2015 (ColArt Americas Award)
- Watercolor West 46th Annual – 2014 (Signature Membership)
- American Watercolor Society 147th Annual – 2014
- California Watercolor Association 43nd Annual – 2013
- Watercolor West 43rd Annual – 2011
- Watercolor West 42nd Annual – 2010
- National Watercolor Society 89th Annual – 2009
- American Watercolor Society 141st Annual – 2008
- National Watercolor Society 86th Annual – 2006 (WW award & Signature Membership)

Linda looks forward to meeting all on November 18.

Website: lindaerfle.net





from the president

CWA Wants You!

The 2016 nominating committee is looking for members who would like to give back to CWA!

The nominating committee members are:

Juanita Hagberg
Georganne Zaro
Carol Husslein

The board positions open for 2016 are:

Co-Vice President/Membership (1)
Director of National Exhibition
Members At-Large (2)

Current Co-Vice President/Membership, Sue Johnston, is looking for someone to partner with for 2016. She is ready, willing and able to teach you the ropes.

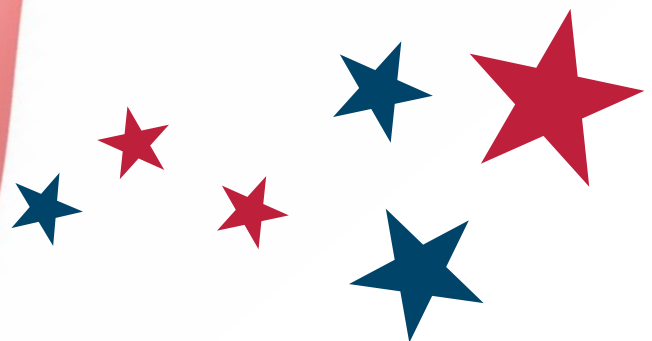
Ruth Miller has been our Director of National Exhibition for three years. It is time someone else took over this position. Ruth has some very good ideas on how to divide the National Exhibition position into manageable portions so the upcoming director does not have to “eat the watermelon whole.” She can’t wait to share her ideas with you!

Last but not least, our Members At-Large positions are a way for you to get your feet wet and learn how CWA works. In this position, you assist the board where needed and act as a liaison between members and the board. At-Large members often join the board the following year. Our 2015 At-Large board members could not do that due to schedule conflicts and commute issues.

Our board meetings for 2016 will be held on the first Tuesday of the month, January – May and July – November. No meetings in June or December unless the board deems necessary. The meeting is at the Ygnacio Valley Library in Walnut Creek from 7-9pm.

CWA is an organization run by volunteers.
We need YOU!

Sincerely,
Carol Husslein



The CWA workshop committee is pleased to announce the



2016 Watercolor Workshop Series

California Watercolor Association



Keiko Tanabe

5 Days | February 15-19

Watercolor: Keep It Simple and Strong | All Levels

CWA Members \$595

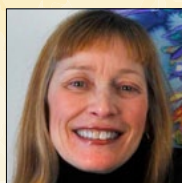


Bev Jozwiak

3 Days | March 16-18

Painting Life with Life | All Levels

CWA Members \$395

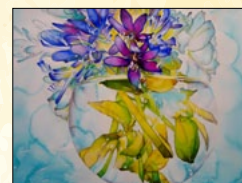


Carol Carter

4 Days | April 19-22

Watercolor from the Heart | All Levels

CWA Members \$495



Frank Eber

4 Days | May 17-20

Atmospheric Landscape in Watercolor | All Levels *

CWA Members \$495

(*Students should have an understanding of the watercolor medium)

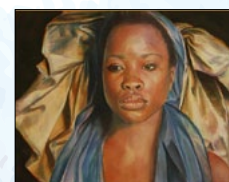


Jean Pederson

5 Days | September 19-23

Faces and Figures in Water Media | Intermediate/Advanced

CWA Members \$595



Stan Miller

4 Days | October 18 - 21

Romantic Realism/Portrait and Landscape in Watercolor | Intermediate/Advanced

CWA Members \$495



Registrations available online now. For information, contact our new registrar, Sally Noble, at registrar@californiawatercolor.org. Hope to see you in a 2016 workshop!

The Workshop Team: Wendy Oliver and Phyllis Brady, Co-Directors; Sally Noble, Registrar; Anne Jacobson, Publicity



newsletter deadline info

The deadline for placing items
in the December newsletter is the
15th of November.

Send articles and photos by disk,
email, fax or in writing to:

Patricia Rosa

newsletter@californiawatercolor.org
5499 Wilke Dr.
Concord, CA 94521
eFax: 413.375.1851

membership/ data manager

Mail all changes of address,
phone number and email to:

Anne Jacobson

cwa.data@gmail.com
c/o CWA P.O. Box 4631
Walnut Creek, CA 94596

monthly meetings

Meetings are held the third
Wednesday of each month
(except June and December)
at 7:30pm,

Shadelands Center

111 N. Wiget Lane
Walnut Creek, CA

(NW corner of Wiget Lane and
Ygnacio Valley Road).

cwa workshop info

Wendy Oliver

925.280.1944

June Hunt

510.520.3802

Anne Jacobson

510.339.6916

e-newsletter info

To receive this newsletter
electronically please send a note to
our Data Manager with the email
address at which you wish
to receive the newsletter.

show news

“interPlay” at Blackhawk Gallery

Through November 29th. New artworks by members include paintings, drawings, sculptures, ceramics, photographs, and wearable art.

3416 Blackhawk Plaza Circle, Danville, CA

For info: (925) 648-8023 or www.BlackhawkGallery.org.

“Chaos” National Juried Exhibition 2016 - at Arc Gallery

Arc Gallery is seeking works that depict chaos or cause chaos in the viewer. What does chaos mean to you?

DEADLINE: February 21, 2016

EXHIBITION DATES: May 7-June 25, 2016

CATEGORIES ACCEPTED: Sculpture, painting, drawing, photo, printmaking, ceramics, assemblage, collage, mixed media, fiber art, artist book

VENUE: Arc Gallery, 1246 Folsom St, San Francisco 94103

JUROR: Annette Schutz, ArtHaus Gallery, San Francisco, CA

JUROR'S AWARD: A Juror's Award ribbon, certificate and \$250 will be presented to each of the three works that express the most imaginative interpretation of the theme.

1246 Folsom Street, San Francisco, CA

For info: (415) 298-7969 or www.arc-sf.com.

FALLBROOK ART CENTER CALL FOR ENTRIES

7th Annual Signature American Watermedia Exhibition

Presented with the travel exhibition from the 95th annual National Watercolor Society International Exhibition in our 2016 World of Watercolor

DEADLINE: November 20, 2015

JUROR & JUDGE FOR AWARDS: John Salminen, NWS, AWS.DF

AWARDS: \$10,000 in Cash & Merchandise Awards

SELECTION: Up to 90 works will be selected for the show

SHOW DATES: February 6-March 20, 2016

103 South Main at Alvarado, Fallbrook, CA

For info: (760) 728-1414, info@fallbrookartcenter.org or www.fallbrookartcenter.org.

Save the dates of November 13-15 for OLAS (Old Library Art Studios)

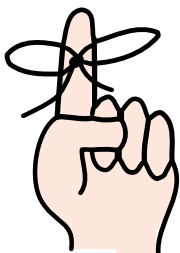
Annual Autumn Art Studio Tour Auburn Art Walk

Visit five artist's studios all at one location: Sandy Delehanty, watercolor, oil painting; Gerda Francesca, clay sculpture, mixed media; Paula Amerine, acrylic, oil and mixed media; Thien Dao, clay sculpture, mixed media; Merridee Smith, dyes on silk, felt, Keith Smith, Guest Artist, batik.

175 Almond Street, Auburn, CA

For info: (916) 652-4624 or sandydelehanty@yahoo.com.

continued on page 9



Plan ahead!

Submissions for the newsletter must be received by the 15th of the month prior to publication!

December Newsletter Deadline is November 15th

Send to newsletter@californiawatercolor.org

member news



Last Connection 1 - Trust by Ally Benbrook

Ally Benbrook's painting "Last Connection 1 - Trust" was juried into the Shenzhen International Watercolor Biennial 2015-2016, and she will be travelling to China for the week-long festivities in Shenzhen. There were 7,800 entries with 230 paintings chosen, including only 40 from the United States. In addition, during 2015, she has earned signature status with 5 watercolor societies: WW, PWCS, MSWS, WSA, and RRWS.



Julie Limberg has twenty watercolor paintings exhibited at the Ygnacio Valley, 2661 Oak Grove Road, Walnut Creek. There will be a reception at the library on Thursday, Nov. 5, from 6:30 to 8:00pm.

The paintings are a mix of subjects, though mostly local and foreign landscapes. The paintings will be exhibited until December 30, during regular library hours.

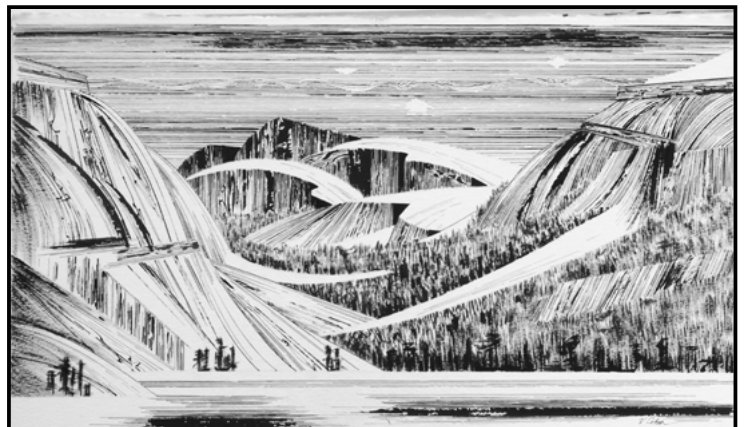
Robin Purcell's, AWS, NWS, Painting "After the Fire VIII" has been accepted to the American Impressionists Society 16th Annual Exhibit in Scottsdale Arizona at the Trailside Galleries, October 1 to the 29th. This is one of a series of 10 paintings Purcell completed in the year after the Morgan Fire on Mount Diablo.



After the Fire VIII by Robin Purcell



David Savellano and Qian Gao are having a "Two person Watercolor Exhibition" in Lindsay Dirx Brown Gallery, San Ramon (community center). More than 40 recent paintings are displaying in the gallery from November 2 - 29, 2015.



Glacial Reality by Valerie P. Cohen

Valerie P. Cohen's, CWA, SDWS is juried into CWA's 46th National Exhibition. "Glacial Reality," Ink and Watercolor, 17" x 30", Valerie P. Cohen



CWA 46th National Exhibition

**Congratulations to the accepted artists
for the CWA 46th Exhibition!**

Adams	<i>Sugar Plum</i>	Keith	<i>Reflecting Amber Hues</i>
Adkison	<i>The Exhibit</i>	Kempe	<i>Portofino Holiday</i>
Athanas	<i>Fantasy</i>	Killeen	<i>Cactus Abstract</i>
Ayers	<i>I Need Repairing</i>	Lacki	<i>Watching Paint Dry</i>
Baker	<i>Naked Ladies</i>	MacDiarmid	<i>Zen II</i>
Ballard	<i>Sun Washed Cactus</i>	Marshall	<i>Foggy Morning</i>
Barrero	<i>China Town</i>		<i>Newport Bay</i>
Bechtold	<i>Mathias</i>	McCormack	<i>Chromodynamics in a Shallow Space</i>
Belleville	<i>Lunch with Icarus</i>		<i>Time Shift</i>
Bidigar	<i>Chopin Pianist</i>	Mitchell	
Breines	<i>Tangerines in White</i>	Mothershed	<i>Monastery Beach, Carmel</i>
	<i>Carton with Hand Towels</i>	Near	<i>Google Goggles</i>
Broad	<i>Emeryville</i>	Neill	<i>Balloon Gathering</i>
Brown	<i>Chocolat</i>	Nelson	<i>Night Life</i>
Carlisle	<i>Zuni Crossroads</i>	Ng	<i>Boat Quay en Plein Air</i>
Cheney-Parr	<i>Loreley Castle on the Rhine</i>	Nichols	<i>Quorra by the Gate</i>
		Purcell	<i>Summit From Curry Point</i>
Chien	<i>Sunshine in NYC</i>	Rafter	<i>Holding Back</i>
Chiofalo	<i>Trio</i>	Reardon	<i>Gubbio</i>
Cohen	<i>Glacial Reality</i>	Rider	<i>Retired</i>
Daily-Birnbaum	<i>The French Connection</i>	Rogone	<i>Strawberry Glass</i>
Davidson	<i>Honflour</i>	Rouse	<i>Second Chance</i>
Dispenziere	<i>The Play of Light III</i>	Routledge	<i>Beach Crew</i>
Eesley	<i>Marvelous Hydrangea</i>	Santos	<i>Crossing 133</i>
Erickson	<i>Twist Shout</i>	Savellano	<i>Perugia Vista</i>
Evans	<i>El Matador</i>	Schaller	<i>Santa Monica Pier</i>
Even	<i>Full Bloom</i>	Shawn	<i>High Summer Dreams</i>
Fairmont	<i>Don't Fence Me In</i>	Shin	<i>Rose I</i>
Frey	<i>Almond Blossoms</i>	Shitole	<i>The Companion</i>
Frye	<i>My Way</i>	Smith	<i>Rousillion</i>
Gao	<i>Walking Street</i>	Staub	<i>Cornered</i>
Greer	<i>May Peace Be With You</i>	Stolz	<i>Snow Creek</i>
Gross	<i>Ryans Rocks at Point Lobos</i>	Swenson	<i>Roof Tops Tower</i>
Harper	<i>The Orange Sweater</i>	Tang	<i>NYC Morning Light</i>
Hook	<i>Stadium Series</i>	Tapp	<i>The Dock Workers' Office</i>
	<i>Off Season</i>	Tikhomirov	<i>Night Diamonds</i>
Hosa	<i>Backyard Las Cruces, NM</i>	Vodden	<i>Shadows Moved Over Her Young Face</i>
Howell	<i>In Mornings Light</i>		
Huang	<i>Orchid Melody</i>	Walters	<i>Oporto Fishermen</i>
Hunter	<i>Braided Bounty</i>	Wang	<i>A Nomadic Childhood</i>
James	<i>Geometry</i>	Wear	<i>Cruising the Shallows</i>
Jones	<i>Lennonside Butcher</i>	Yoerg	<i>The Dam</i>
Jozwiak	<i>Hoops</i>	Zaro-Eddy	<i>Island of Brac</i>
Keary	<i>Sea Quest</i>		



board of directors

<i>president</i>	Carol Husslein 925.935.6779
<i>co-vice presidents/membership</i>	Sue Johnston 510.531.5471 Robert Davidson 510.552.4924
<i>national exhibition</i>	Ruth Miller 925.631.6673
<i>co-chair california shows</i>	Liz Johnston 925.988.0450 Joan Alexander
<i>co-directors of programs</i>	Marilyn Miller 925.631.6673 Betsy Trtek 925.825.4371
<i>secretary</i>	Leslie Wilson 925.935.7529
<i>budget director</i>	Iretta Hunter 925.330.2988
<i>communications director</i>	Yvonne Lee
<i>co-directors of workshops</i>	Wendy Oliver 925.280.1944 Phyllis Brady 925.855.8532
<i>workshops assistants</i>	registrar: Sally Noble publicity: Anne Jacobson 510.339.6916
<i>co-directors of outreach</i>	Sheila Cain 510.845.0863 Victoria Bianco 925.687.8675
<i>members at large</i>	Susan Scolnick Dmitry Grudsky

staff

<i>membership/data manager</i>	Anne Jacobson
<i>newsletter editor</i>	Patricia Rosa
<i>bookkeeper</i>	Melissa Alva
<i>audio/visual set up</i>	Unfilled

volunteer committees

<i>community outreach</i>	Sheila Cain Victoria Bianco Geroganne Eddy-Zaro Marianne Elliott
<i>mail distribution</i>	Iretta Hunter
<i>hospitality</i>	Sandra Morea Susan Scolnick
<i>treasurer assistants</i>	Annette Hodtwalker
<i>co-video librarians</i>	Charlotte Morris Terrie Moore
<i>plein air</i>	Samantha McNally Andrea Baron
<i>panel rental</i>	Barb Bochenek* Pam Howett
<i>cwa webmaster</i>	Efrain Ibarra

*Chair of committee

workshop corner

Don Andrews Watercolor Figure's Workshop:

November 21-22, 2015

Cost: \$225 Live model

Location: Hampton Inn and Suites Folsom, CA

Contact: Barbara Otey at barbotey@comcast.net

Make checks payable to Barbara Otey
and mail to 418 Williams Street, Folsom CA

David Savellano

Combine art and travel to Northern Costa Brava and Barcelona, Spain sponsored by French Escapade Tours on May 2 - 9, 2016. We will be based in the picturesque fishing village of Calella de Palafrugell and stay in a wonderful beachfront hotel. Workshop instructor David Savellano will teach travel sketching and plein air watercolor painting. Each day David will give a morning sketching demonstration (ink and watercolor) and an afternoon watercolor painting demonstration followed by one-on-one coaching. All levels welcome. Workshop Fee: \$2,990 per person if signed up before Nov. 30, 2015; \$3,190 after Nov. 30, 2015. David will hold a free 2 hour travel sketching and informational session on October 17, 2015 in Alameda, CA. To reserve a space for Oct. 17, send RSVP email to: eastshoreart@comcast.net.

Contact Info: Jackie Grandchamps, Owner of French Escapade at:
contact@frenchescapade.com or www.frenchescapade.com

Sketching and Hiking the Nakasendo Way with Karen Frey

Are you considering your next great adventure? Perhaps this is the one you've been searching for. Karen Frey will be leading a sketching and hiking tour of the Nakasendo Way in Japan. The workshop is scheduled for October 3 - 11, 2016. Participants will hike up to 9.3 miles in a day, carrying their own painting gear. An additional small pack will be allowed each person and will be transported separately. We will hike one day allowing quick sketching opportunities, and painting the next. Accommodations, breakfasts and dinners will be included in the fee, as well as a tour guide / interpreter. The approximate cost, including airfare, is \$4500. This will be both a mentally and physically challenging experience.

For more information call Karen at (510) 652-9837,
or email her at blumule@att.net.

Dear Elizabeth...

Questions and answers about watercolor art

Send your watercolor questions to ejohns5513@aol.com

Risky Business

Dear Reader,

The November column is the third and last in a series based on the Risky Business member show held at John Muir Aspen Surgery center from August 30 through October 9. The show was based on a challenge to artists to try something new. To date, I have interviewed about half of the artists who entered this innovative show with the goal of learning more about their strategies and techniques. I am sorry that I could not interview every single Risky Business artist, as all of the entries were interesting to see. Thanks to artists Denise Campana, Betsy Trtek, Sal Valencia, and Leslie Wilson who shared their stories for the November column. I asked the same questions of each artist: What new approach did you try? How did you make sense of or reflect on the new painting? What new practices might you take forward to your next paintings?

What new approach did you try for the Risky Business show?



Slopes of Mount by Diable-Denise Campana, watercolor paints on paper

Denise: The new approach was that I put molding paste to create a little texture to the paper. I enjoyed the interaction with the watercolor, paper and molding paste.



Gold Country by Betsy Trtek, watercolor paints on paper

Betsy: I based my painting (Gold Country) on a small plein air painting that I had completed at Murphy's in 2013. My goal was to create a larger painting on a half sheet that projected spontaneity. The risky aspect: I tried some large bold, brushstrokes. I also painted three smaller studies. The first two were muddy. I tried very vivid colors in the third study. It was somewhat garish. The painting I entered was toned down. The original plein air painting had a feeling of a tree morphing into a flock of birds. I lost that effect in the final entry. But some of the light is nice.



Impact by Sal Valencia, waterbased media on paper

Sal: I used a full sheet of watercolor paper with batik dies. I squirt the dyes on the paper. I did not use bushes instead; I used a squeegee, like I was cleaning windows. That was my new approach.

I have a background in abstract painting that goes way back, (my approach to painting) is just how I feel when I approach the piece of paper. I was getting bored with my regular watercolors, which are the plein air approach



California Symphony by Leslie Wilson, watercolor paints on paper

Leslie: I am not sure that I have changed my painting processes very much, although the abstract was one of the first that I have ever done. I followed a different process in that I did not do a drawing or use any source material. I did not have any plans as I developed it, I just worked on the image as it emerged. I thought about the elements and principles of design and how the eye would move around the paper. For example, I might make a soft area and then keep an edge hard. Or I would try and see how the diversity of the shapes was developing in order to make decisions as I continued on with the process.

When I came to the place where the painting did not need anything else, then I was finished. I actually started the project as a demo in one of my classes. I wanted to teach students how to implement variety in their paintings using the elements and principles of design. I stressed avoiding too much sameness, similar shapes, similar colors, and similar edges. I was trying to avoid a boring painting by thinking about how to make compelling decisions about how the eye would move through the painting.

How did you make sense of or reflect on the new ways of painting?

Betsy: I would try to push the vivid colors as far as I could, add more sense of depth, a stronger focal point, and stronger visual harmony. The birds might return as well.

Denise: I will definitely try this again. I enjoy experimenting with the watercolor.

Sal: I want to challenge myself to move forward. I was already going in a new direction with the dyes and (found) they are just like watercolor only more pigment. I have 8 or 9 of these pigment based paintings completed. I am doing a whole series and plan to enter one in the national show.

Leslie: I did another painting using the same approach. I shut my eyes, after loading a brush with color and water; I just shut my eyes and made a brushstroke on the paper. From that I built the first shape and then developed further. The painting was developed from a single brushstroke by applying the principles of design.

What new practices might you take forward to your next paintings?

Sal: As a painter, who has been doing watercolors for a long time, I pay attention to what others are doing, and my goal for a long time, has always been to step out of the box and try something new.

So much of our personalities go into painting. A lot of people are satisfied with doing the same flower paintings, and I always think that we are always growing. The minute I stop growing, it is time to put the paints away. Hey tell me when my paintings start looking bad and then I will retire.

I had 3 or 4 of these paintings with the dyes that I was not happy with, so now I am working them like a collage. I put one painting on top of the other, and I cut pieces out of them. I fit them together like a puzzle and I tape them from the back.

Betsy: Create more preliminary pencil sketches, value studies, and side studies of difficult areas. Simplify towards abstraction, without losing a sense of place.

Leslie: I will carry the new practices forward in my continuing process of learning more about design and composition, whether a realistic or semi-realistic, or totally abstract image. The merit of a painting depends on how successful the artist is in applying the elements and principles of designs. As I go forward, I am always going to be learning more about those applications to make my paintings more compelling.

Denise: Again, I was very happy to receive this recognition

Final comments from Elizabeth...

I saw a range of experimentation in the responses to Risky Business. Some artists worked with different techniques and approaches to the media that might include different materials or ways of applying paint. Others changed the development process either adding or deducting from habitual approaches. Still others used different subject matter or tried for abstractions for the first time. Some artists experimented with the balance between control and randomness. I found the processes very interesting however the innovation was developed or conceived. I wish to thank everyone who was willing to share their experiences through interviews and discussions. I am hoping the stories encourage more artists to enter the California shows, which will expand next year to offer more opportunities.

sponsorships

The CWA newsletter is accepting ads from anyone who would like to be a sponsor of CWA. The newsletter is emailed monthly to all of our members. It is a very effective way to reach a large audience of artists. All CWA artists paint with watercolors, but not exclusively. Many members also paint in oils, acrylic and pastels.

We are offering the following sponsor packages that reflect available advertising space. All ads, except Classified, run for a minimum of 3 months and are payable in advance. A 10% discount is available to CWA members, members also get classified ads for free. Deadline for insertion is the 10th of each month prior to publication (ie, Feb. 10 for the Mar. newsletter).

Formats accepted are digital or camera-ready artwork. Images should be scanned at 300 dpi. File format preferred is PDF, but we can accept JPG, TIFF, EPS files. All ads will appear in black and white in the print version, and in color in the email version.

Contact Patricia Rosa at newsletter@californiawatercolor.org for further information.

sponsor levels

Distinguished Donor

Full Page/7.5 x 10
3 months: \$750
12 months: \$3000

Benefactor

Half Page/7.5 x 5
3 months: \$450
12 months: \$1800

Fellowship

Third Page/7.5 x 3.25
3 months: \$360
12 months: \$1440

Patron

Quarter Page/3.75 x 5 (vert)
3 months: \$240
12 months: \$960

Friend

Eighth Page/3.75 x 2.5 (hrz)
3 months: \$180
12 months: \$720

Classified

text only: approximately 400 characters, including spaces. \$50/month (free to CWA members and non-profit organizations)

show news

continued from page 5

Sacramento Fine Arts, First Call to Artists

All Media - All Ages – 2016 Animal House, The Exhibit

January 5-30, 2016. It's a ZOO out there!

ONLINE ENTRY: Enter online now through November 30, 2015, midnight. www.sacfinearts.org/entry. You may also enter by mailing in cd, application and check to SFAC 11th Annual Juried Fine Art Exhibition of Animal Themed Artworks. JUDGES: Painting, drawing, all 2D art: Abigail VanCannon; Sculpture, 3D art and youth categories: Chris Thompson; Photography: Michele McCormick.

5330 Gibbons Dr., Carmichael, CA

For info: sfac2@sacfinearts.org.

Sebastopol Center for the Arts Watermedia Exhibition

January 8 - February 7, 2016 . Open to all artists residing in California, we are calling for paintings not exceeding 400 sq. in. - frame included - in watermedia on paper (not canvas). Acceptable media are watercolor, acrylic, gouache, casein and egg tempera. Minor amounts of other media e.g. ink, pastel, graphite, may be used.

SUBMISSIONS DUE: December 7, 2015, 3-6 pm

282 South High Street, Sebastopol, CA

For info: (707) 829-4797 or www.sebarts.org

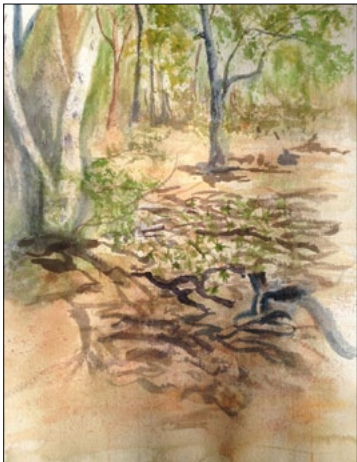
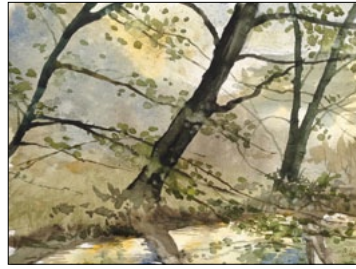
Winging It — Birds and Croatian Landscapes

New work by Floy Zittin and Friends. Exhibit runs November 3-28, 2015. Reception to meet the artist Friday, November 6, 2015, 5-8PM (First Friday) at the gallery. Gallery hours: M-Sa 11AM-5PM, Sun 11AM-3PM.

Viewpoints Gallery

315 State Street, Los Altos, CA.

For info: (650) 941-5789 or www.viewpointsgallery.com.



A Good Month for Plein Air Painting

Two locales enticed a large group of painters in October: Borges Ranch in Walnut Creek and Sycamore Grove park in Livermore. Settling down to paint in the gorgeous early fall weather were Samantha McNally, Carolyn McGovern, Theresa Lo, Juanita Hagberg, Chad Hunter, Betsy Trtek, Craig Moline, Sue Kleiman, Virginia Grewen, Andrea Baron, and Brian Rusnak.

By the time you read this article, the last paint out at Tilden Park in Berkeley will have occurred, which only means one thing—it's time to start thinking of where you'd like CWA to paint next year. Send your ideas to the 2016 plein air chairs, Samantha McNally and Theresa Lo. They'll be making up the schedule in the next few months.



OUTREACH

VETERANS ADMINISTRATION

OAKLAND

A pilot Outreach was held on September 9, 2015 at Outpatient Art Therapy. Sue Johnston and Sheila Cain introduced 5 veterans to a dvd biography of the life & works of J.M.W. Turner, painted a limited palette watercolor painting and had a mini art show of our work. We each spoke about our work and the vets shared their journals plus where and when they had served for the U.S.A. We acknowledged their service. It was a win win.

You CWA members in Oakland/Berkeley **Join in!** We're growing.



Come Volunteer

email outreach@californiawatercolor.org



OUTREACH

MARTINEZ V.A.

*California Watercolor Association in collaboration
with the Martinez VA Recreation Therapy Department*



Veteran's Day: Nov. 11th

Watercolor Art Show

Wednesday November 11, 2015

10:00 am - 12:00 pm

Where

Martinez Veterans Administration
The Center for Rehabilitation
and Extended Care
150 Muir Road
Martinez, CA 94553

Public Parking

North side Muir Rd.
Across the street from 150 Muir Rd.
shuttles provided

Featuring:

- ⇒ watercolor paintings by the Martinez Veterans
- ⇒ a watercolor painting demonstration with the veterans
- ⇒ live music with TBD
- ⇒ light refreshments



Join OUTREACH of CWA in
honoring our Service men & women.



Volunteer:
www.outreach@californiawatercolor.org



OUTREACH

ALAMEDA COUNTY FAIR

Dear Sheila Cain and the California Watercolor Association, Thank you so much for choosing me to be awarded the best watercolor grades 6-8 at the Alameda County Fair this year. I am very thankful to everyone at the California Watercolor Association. I hope to enter in the future and receive this great honor again.

This achievement was very special to me and I am so lucky to have been awarded this. I thank everyone at The California Watercolor Association again and I hope to be a candidate for your prizes again.
Best Regards,
Kailey Ornelas
Alameda County Fair, 2015



Kailey Ornelas's, "Painting" category 7th - 8th grade



CWA 2015/16 CALENDAR

2015 MEETINGS & DEMOS

November 18 (UPDATE) Linda Erfle

December **NO MEETING**

2016 MEETINGS & DEMOS

January 20 John Muir Laws

February 17 Kieko Tanabe

March 16 Bev Jozwiak

April 20 Carol Carter

May 18 Frank Eber

June **NO MEETING**

July 20 Michael Reardon

August 17 Myrna Wacknov

September 21 Jean Pederson

October 19 Stan Miller

November 16 Nancy Collins

December **NO MEETING**

2016 CWA WORKSHOPS

February 15-19 Keiko Tanabe

March 16-18 Bev Jozwiak

April 19-22 Carol Carter

May 17 - 20 Frank Eber

September 19-23 Jean Pederson

October 18-21 Stan Miller

2016 CWA PLEIN AIR DAYS

Watch for details for the
2016 Planning Meeting

www.californiawatercolor.org
on the plein air page.



Photos of Paint Outs, CWA show winners, and Monthly Demos are on www.facebook.com/californiawatercolor