



Plein Air — Tao House, Danville

Saturday, June 17, 2023, 10:00 am to 2:00 pm



At the Eugene O'Neill National Historic Site (★), we will be guests of the Eugene O'Neill Foundation, Tao House and the National Park Service. It was at Tao House where O'Neill found the peace and quiet to write his late masterpieces, including *A Moon for the Misbegotten*, *The Iceman Cometh*, and *Long Day's Journey Into Night*. Take a self-guided tour of the house and see O'Neill's study and his player-piano. No painting or eating indoors, but there is plenty to explore on the grounds. You can see the Old Barn, where in September *Long Day's Journey* was performed during the 20th anniversary of the Eugene O'Neill Festival. Have your brown-bag lunch at the picnic tables and paint views of Mount Diablo, the Las Trampas hills, the nut orchard, the courtyard garden, cows grazing nearby, and even the gravesite of O'Neill's Dalmatian. Bring a bag lunch and we can get together at 1:00 pm to review paintings and have lunch. Water, rest rooms and picnic tables are available. Rain cancels. For more information, go to www.eugeneoneill.org.

Parking and Shuttle Information:

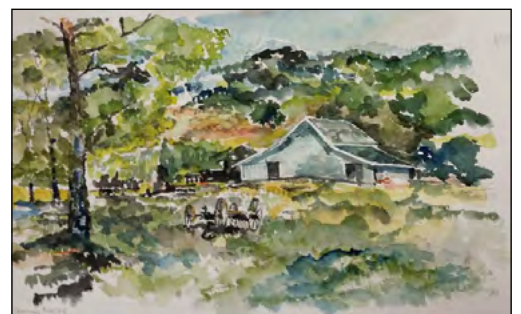
To get to the site, catch the NPS shuttle in front of the Museum of the San Ramon Valley (★), 205 Railroad Ave., Danville, CA 94526. Park free in the large lot next to the museum. Saturday shuttle pick-up times at museum: 10:15 am, 12:15 pm, and 2:15 pm. For your return: last shuttle at 3:30 pm.

Park site is on a private road, visitors will be shuttled up to the park site from the museum.

Directions to Danville:

From the West: Highway 24 toward Walnut Creek, merge onto 680 in San Jose direction, take the El Cerro exit into Danville, continue west on El Cerro, then a left turn onto Danville Blvd. Immediately after San Ramon Valley High School, take a right onto Railroad Ave. On the right in a few blocks you will come to the museum (cross street is Prospect Ave.) and the parking lot.

From the East: Highway 24 toward Walnut Creek, merge onto 680 in San Jose direction, take the El Cerro exit as described above.



Watercolor by Chuck Dorsett



 Click for Google Map to the Railroad Museum.

Questions?

Contact JoAnn McMahon,
Plein Air Coordinator
Email: joannm1@mac.com or
pleinair@californiawatercolor.org
Cell: (510) 435-9763