

CWA 2017 Watercolor Workshop Series



John Salminen

Realism through Design

February 13-17, 5 Days, Intermediate/Advanced

Award-winning artist John Salminen will kick off our 2017 workshop season with his workshop, *Realism through Design*. In this workshop, John will share his approach to painting the urban scene in watercolor. John will help participants in all aspects of painting a representational cityscape or town scene – choosing the subject, adding mood and creating emotional content, lighting the scene for dramatic effect, using photo reference in a meaningful way and most importantly, strengthening and enhancing representational painting through design. The workshop will include demonstrations, critiques and lots of one-on-one individual help. If you are new to painting cityscapes or are an experienced urban painter, this workshop will be an invaluable opportunity for new insights.

Location: East of San Francisco, Cal State East Bay.

Non-Members \$750, Members \$695.

Jeannie Vodden

Translucent Watercolor Portraits

March 15-18, 4 Days, All Levels

Living in the foothills of the Northern Sierra Nevada Mountains, Jeannie Vodden dedicates her time to expressing her love and passion for art in painting, drawing, teaching and the continuing study of both art and philosophy. She is a versatile painter of portraits, still life, floral, landscape and fantasy, most often with watercolor. "My desire is to bring to my work the imagination and curiosity which is so often found in children... And to combine that sense of wonder with an experienced artist's hand."

Location: East of San Francisco, Cal State East Bay.

Non-Members \$550, Members \$495.

Birgit O'Connor

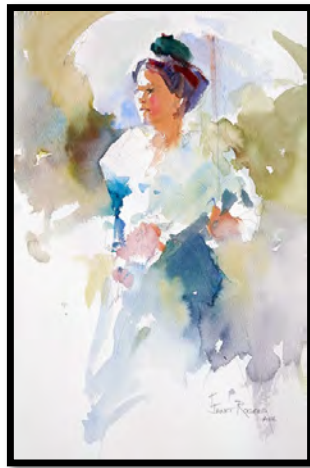
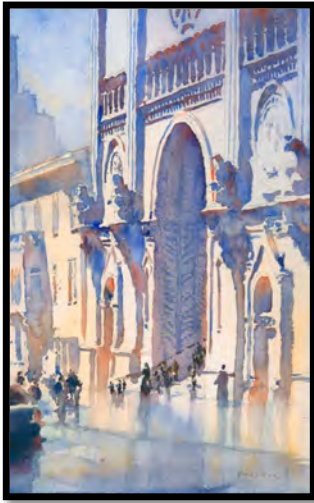
Fearless Flowers

May 15-18, 4 Days, Advanced Beginners & Up

A self-taught watercolor artist, Birgit O'Connor specializes in florals and landscapes, and has developed interesting techniques for painting rocks and sand. Her award-winning work has been recognized and published in over 24 national and international artist publications, including International Artist Magazine. In her workshop, Birgit will guide you step by step; share how she studies her subject, and her techniques for simplifying a flower and finding the WOW factor that creates dramatic paintings. You will learn how to blend and mix color to give the illusion of depth by using a limited palette. Advanced beginners and up are welcome in this workshop.

Location: East of San Francisco, Cal State East Bay.

Non-Members \$550, Members \$495.



Michael Reardon

Watercolor Techniques

July 21-22 & August 25-26, 2 Days, Advanced Beginner & Up

California native Michael Reardon is a signature member of AWS, NWS, Watercolor West, and our own CWA. He is also an avid plein air artist who has been painting in watercolor for over 25 years, and an architectural illustrator for over 30 years. In this workshop, Michael will share information from his latest book, *Watercolor Techniques*, which hit the shelves this past spring. He will share some of his insights into painting and how to enjoy it. Through demonstrations and hands-on painting, Michael will show ways to simplify and create dynamic compositions, work quickly and decisively, and capture the essence of a scene convincingly. He will cover the use of a limited palette, dynamic color mixing, and the use of light and value to describe form.

Location: San Francisco Bay Area, Cal State East Bay.

Non-Members \$330, Members \$275.

Janet Rogers

Expressive Watercolors: Flowers, Faces and Figures

October 16-19, 4 days, Advanced Beginners & Up

Fresh flowers in the studio will be the inspiration for the beginning of this dynamic workshop – progressing to faces and figures. Through a series of “fun” painting exercises, students will develop a more loose and natural approach – giving them an opportunity to be more spontaneous and expressive in their paintings. We will move into painting people, learning how to express translucent flesh tones, while focusing on the gesture of the person. Painting children will also be covered as well as an approach to quickly interpret the figure. Although we will be working primarily with photographs, we may have a chance to work from a model...so bring your camera! Some students may want to paint just figures or just flowers, although the demonstrations and instruction are geared to beginning with flowers and ending with faces and figures.

Location: San Francisco Bay Area, Cal State East Bay.

Non-Members \$595, Members \$550.

2017 CWA WORKSHOP INFORMATION

If registering for 2 or more workshops online at the same time, a discount of 10% per workshop will be applied automatically. If using a printed form, the Registrar will arrange the discount

Membership \$45/year. Questions? Contact Registrar Sally Noble: registrar@californiawatercolor.org.

Preferred Registration & Payment Method:

Register & pay on-line: www.californiawatercolor.org/.

CWA uses PayPal to process our payments. At the PayPal site, you may use your credit card or pay via a PayPal account.

CWA Members: Login first to receive discounted member rate, select **Workshops Tab**, and then desired workshop.

Non-Members: Select **Workshops Tab**, and scroll to workshop.

Alternate Registration & Payment Method:

Pay by Check: Use this form and send with check payable to California Watercolor Association, and mail to Sally Noble, Registrar, 1341 Leisure Lane #2, Walnut Creek, CA 94596-0631.

Terms & Conditions and Cancellation Policy:

If you have paid in full and need to cancel 6+ weeks prior to the workshop, a full refund will be given less the **\$75 non-refundable fee** per workshop start date; after 6 weeks, no refunds will be given. For more complete information, please see our **Terms & Conditions and Cancellation Policy on our website**, www.californiawatercolor.org, under the **Workshops** tab.

2017 CWA REGISTRATION FORM

Name		
Address		
City	State	Zip
Day Phone	Night Phone	
Email		

X	Artist	Days	Date	CWA Mbrs	NonCWA
	John Salminen	5	Feb 13 - 17	\$695	\$750
	Jeannie Vodden	4	Mar 15 - 18	\$495	\$550
	Birgit O'Connor	4	May 15 -18	\$495	\$550
	Michael Reardon	2	July 21 - 22	\$275	\$330
	Michael Reardon	2	Aug 25 - 26	\$275	\$330
	Janet Rogers	4	Oct 16 - 19	\$550	\$595

Mail form & check payable to the California Watercolor Association to Sally Noble, 1341 Leisure Lane #2, Walnut Creek CA 94596-0631.

[] I am sending a **non-refundable** deposit check in the amount of \$_____ (\$75 per workshop) or full payment of \$_____. Cancellations 6+ weeks in advance eligible for a refund less \$75 deposit. The balance is due 60 days in advance.

I am: ___ CWA member ___ Non-Member. ___ I wish to become a member by adding the annual \$45 membership fee.

How did you hear about the workshop? _____

I have read and accepted the CWA's Terms & Conditions and Cancellation Policy and agree not to hold CWA or any instructor responsible for any injury or loss related to workshops.

Signature _____ Date _____