



California WATERCOLOR Association

September 2011

P.O. Box 4631
Walnut Creek, CA 94596

www.californiawatercolor.org
email: info@californiawatercolor.org

contents

2
From the President

3
CWA Workshops

4
Member News

5
Workshop Corner

6
Show News,
Silent Auction

7
Alameda Library
Show Prospectus

8
Directors,
Committees,
Staff,
Plain Air Corner

9
Outreach News,
Sponsorships

10
Sponsorships,
42nd National
Exhibit Committee
Update

11
Plain Air Paint Out
Prospectus

12
Calendar,
Help Wanted

General Meeting • 7:30 pm, Wednesday, September 21, 2011 • Shadelands Center, 111 N. Wiget Lane, Walnut Creek, CA

September Guest Artist Cheng-Khee Chee



“What inspires me to paint is my strong inner world’s subjective response to the outer world’s objective reality. My subjective response is influenced by my diverse East-West experiences, tradition, knowledge, and personal cultivation.” Thus, as an artist, Cheng Khee Chee, our September guest artist, has explored and experimented with ways to synthesize the concepts and processes of both the East and West traditions, integrating many styles from traditional to nonobjective. He states, “My creative process is strongly influenced by Taoist philosophy, finding the most natural and effortless way to express the essence of a specific subject for which I have deep feelings. The synthesis of the outer and inner world becomes the inspirational basis and contents of my work. The design and craftsmanship form the process for my expression.”

Chee has an impressive resume, including being an Associate Professor Emeritus of the University of Minnesota, a Dolphin Fellow of the American Watercolor Society, a signature member of the National Watercolor Society, and a member of the Transparent Watercolor Society of America (Master Status), the Watercolor USA Honor Society and many others. He is listed in Who’s Who in America, Who’s Who in American Art, Who’s Who in American Education, and Dictionary of World Chinese Artists Achievements. He has been represented in numerous national juried exhibitions and captured over 200 honors. His solo exhibitions include the Tweed Museum of Art of the University of Minnesota, Duluth, 1982; China traveling exhibition, 1987; Singapore Art Museum, 1997; and Bloomington Art Center Inez Greenberg Gallery Inaugural Exhibition, 2003. His publications include *The Watercolor World of*

Cheng-Khee Chee (book 1997), *The Work of Cheng-Khee Chee* (instructional manual 2003), *Old Turtle* (illustration 1992), *Swing Around the Sun* (illustration 2003), *Noel* (illustration 2005), and numerous contributions to books and magazines. He was featured in the *Artist’s Magazine* (December 1997), *Watercolor Magic* (summer 2000) and *Watercolor Magazine* (An American Artist Publication, winter 2002). In 2005, the Creative Catalysts Productions of Oregon released a 6-volume instructional DVD set based on his workshop.

In 2007, Chee coordinated with the Jiangsu Watercolor Research Institute in Nanjing, China to organize the first Invitational Exhibition of Contemporary International Watermedia Masters. 68 artists representing 13 countries worldwide were included. The exhibition was held in Nanjing from November 19 through December 2, 2007, and later traveled to other cities.

Chee was the recipient of the 1994 University of Minnesota system-wide University College Distinguished Teaching Award and the 1994 University of Minnesota, Duluth Campus Chancellor’s Distinguished Services Award. In 2004 the Duluth Depot Foundation honored him with the Art and Culture Community Enrichment Award. In 2008 his Alma Mater Nanyang Technological University in Singapore honored him the Alumni Achievement Award. In 2009 the University of Minnesota, Duluth School of Fine Arts honored him the membership of the society of Prometheans, recognizing his outstanding artistic accomplishments.

A popular workshop instructor and national show juror, Chee’s breakthroughs in concepts and processes have greatly influenced the direction of watermedia painting. He describes his approach to watercolor painting as “a dynamic process and an effort to harmonize opposite elements: yin and yang, intuition and contemplation, emotion and reasoning, incident and intention, subjectivity and objectivity, imagination and reality, abstraction and realism.” He adds that, “The end result is the visual realization of my inner being that I hope will communicate on a universal and timeless level.”

Plan to join us for Chee’s demonstration at the September meeting; it will be a very interesting one, given his deeply spiritual approach to his art and impressive technical skills.

newsletter deadline info

The deadline for placing items in the newsletter is the 15th of each month prior to publication.

Send articles and photos by disk, email, fax or in writing to:

Patricia Rosa

newsletter@californiawatercolor.org

5499 Wilke Dr.

Concord, CA 94521

Ph: 925.672.3052

eFax: 413 375.1851

membership/ data manager

Mail all changes of address, phone number and email to:

Anne Jacobson

cwa.data@gmail.com

c/o CWA P.O. Box 4631

Walnut Creek, CA 94596

monthly meetings

Meetings are held the third Wednesday of each month (except June and December) at 7:30 pm,

Shadelands Center

111 N. Wiget Lane

Walnut Creek, CA

(NW corner of Wiget Lane and

Ygnacio Valley Road).

cwa workshop info

Wendy Oliver

925.280.1944

Susan Lenoir

925.482.4900

June Hunt

510.525.0965

cwa gallery

Gallery Concord

1765 Galindo

Concord, CA

925.691.6140

Hours:

Thursday -Sunday, 11:00 - 4:00 pm

Free parking behind the Gallery,
accessible only from Clayton Road

(just west of Galindo)

www.galleryconcord.com

e-newsletter info

To receive this newsletter electronically (and in color) please send a note to our Data Manager with the email address at which you wish to receive the newsletter. You will then no longer receive it on paper in the mail, but will receive it via email.

from the president

If Not Now, Then When?

August 13, 2011

Members are the most important part of our organization. Without them, there's little reason for CWA to exist. Thanks to the major efforts by our Director of Membership, Sue Johnston and our Membership / Data Manager, Anne Jacobson, our numbers have grown over the past few years and now stand at 750. For that we are grateful. More members means more energy, more ideas, and more growth for all of us.

But strong membership numbers alone won't guarantee the continued health of our organization or any organization. A few years ago I had the dubious honor of being asked to play in a Dixieland band for the last meeting of a venerable jazz club in Alameda. Why was it the last meeting I wondered. They seemed to have lots of members and attendees at the meeting. Their problem was that not enough of the members were willing to serve on the board. The current members were burning out and didn't want to continue carrying the organizational load. So, the club folded.

For a number of years I have been the treasurer and webmaster for another jazz club, the New Orleans Jazz Club of Northern California. We are also facing the problem that too few members will accept the call to join our board and help run the club. We've been beating the bushes, but haven't found any new volunteers. Our board is beginning to wonder if we'll end up like the Alameda club, and have to turn out the lights in the not-too-distant future.

Your CWA Board is beginning to wonder if we will end up like the Alameda jazz club. At the moment, there are five current board members who will continue to serve in 2012. We are not aware of anyone else interested in joining the board, which consists of ten positions. A quorum is five board members so it will be very difficult for such a small board to continue providing the workshops, outreach, programs and meetings that make CWA such a valuable organization. Our non-profit status cannot be maintained without these activities.

I didn't expect such a challenging situation when I stepped up to the plate in January. Perhaps my contribution as president for this year will be to keep our attention focused on this important issue.

In my July letter I asked you to consider volunteering to help CWA in whatever way you can. As of mid August, I have heard very little response to that plea. Enough said?



Bruce Stangeland by Leslie Wilson

*Thanks,
Bruce Stangeland*

workshop corner

Kathleen Conover "Chaos to Order"

October 17 - 21 (All levels)

About her workshop, Kathleen says the following: This week's focus is on strengthening your compositional skills from wherever you are in painting experience. You will bring your paintings from colorful and textured "chaos" to "order" with good design (see definitions below). I teach with daily demonstrations, lead you through design-strengthening exercises and share new painting techniques (including gesso and acrylic mediums). You will work independently each day and have some fun, too. Goals: Understand and implement Design Principles and Elements; create strong compositions and designs; and paint from a plan (your design) and without a plan (intuitively).



Kathleen's passions cover a range of subject matter, as shown by the four series on her website: "Life Cycles" utilizes floral images to express cycles of life, death, and life; "The Industrial Evolution" series is about the changes America is undergoing in its struggling technological and manufacturing industries and is inspired by travels throughout the U.S., but, most specifically, by the Marquette, Michigan iron ore docks (one of these paintings has been selected by AWS for its traveling exhibition currently touring the US); "Frozen Crystal" series interprets nature using frozen paint crystals; and "Contemporary Design" series of abstracts inspired by interactions with the environment.

Kathleen provides the following definitions related to her workshop: **Chaos-** is the exciting and/or interesting, often confusing, beginning of a painting that captures a particular mood, energy, inspiration, texture or other "magic" that is difficult to introduce in your work at a later stage of development.

Order- transforms the chaos of a great "start" into a successful painting through the use of Design Principles and Elements.

Personal Imagery/ Style-is often defined:

1. MARKS: repeated strokes, colors, shapes
2. SYMBOLS: objects of meaning, recurring attractions, dreams. Images with meaning become your symbols and can develop into series of unique work.
3. CONTENT is what your "person" brings to the subject.

\$395 for CWA members.



Registration is still available for this last workshop of 2011!



Cheng-Khee Chee "Watercolor: Synthesizing East & West"

**September 19 - 23
(All levels)**

WAIT LIST

Each day, Cheng-Khee will teach/demo a different concept/technique (traditional, saturated wet, improvisational, crinkling, marbling and monoprinting), and then work individually with students as they apply the concept to their own works, using their own reference material. The focus will be on process, not product.

\$395 for CWA members.

member news



Pike Street by Christopher Wynn

Christopher Wynn will be highlighted as a featured artist in the upcoming October issue of, "The widely available magazine "Watercolor Artist" (available in bookstores in September). The piece is entitled "Escape Artist" and describes his travels circumventing the globe to paint watercolors. He recently was accepted as a Signature Member into the Missouri Watercolor Association. Also, Christopher was chosen to be included in the forthcoming hard-bound book, "The Best of the Best",

by Kennedy Publishing, a source book for "art collectors, art galleries, and embassies" featuring 100 or so American artists.

Dick Green, CWA had paintings accepted into San Diego International and Watercolor West in Brea, CA.

David Savellano, CWA, NWS will be exhibiting paintings in the En Plein Air Alameda and Beyond exhibit at the Frank Bette Center for the Arts 1601 Paru Street, Alameda, CA 94501. The exhibit runs from August 5-October 1, 2011 and features paintings by artists who have participated in past Frank Bette Plein Air Paintouts. 510-523-6957 www.frankbettecenter.org.



Blue Door by David Savellano

J.P. Panter will have her studio open for the 24th Annual Napa Valley Open Studios Tour September 17-18, and 24-25, 2011. This annual event draws thousands of people to visit the professional working studios of artists living and working in Napa Valley. It is free and open to the public. Catalogs and information can be found at www.NapaValleyOpenStudios.org.

Banner Year for New Members! CWA is pleased to welcome 90 new members

Welcome to all our new members:

Rose Baker, Sally Corbett, Marilyn Cullen, Linda L. Curtis, Barbara Daniell, Dodie Davis, Patty Davis, JoAnn Formia, Robert George, Jan Gilman, Douglas Greer, Carole Haan, James Kennedy, Pamela Keilson, Karen Kramer, Libby Lill, Larry Luitjens, Catherine McCargar, Jessica McCoy, Pia McKenna, Dino Mehaffie, Larry Murphy, John Nicolini, Molley O'Leary-Klier, Joe Aki Ouye, Saule Piktys, Ron Ranson, Margot Santolla, Robert Shaw, Bettina Sims, Stephen Sims, Francis Smith, Kay Smith, Nicki Smith, Susan Sohl, Nancy Sprague, Monie Thompson, Katherine Walter, Linda Ann Watson, Maureen Wheeler, Elena Wherry, Lucille Wilkes, Christopher Wynn, Barbara Yoerg, Floy Zittin

Linda Darsow Sutton, notorious earth fan, is going to have over 20 works of her art, mostly wildlife from 2 continents at the Orinda Library Auditorium Gallery in September 2011. Reception on September 10, 2011 3:30pm – 5:00pm with a live raptor friend as a guest, compliments of Native Bird Connections.

Pat Dispenziere was juried into the Carlsbad Oceanside Art League Annual Open Juried Fine Arts Award Show and won the Director's Award. The show is at the League's Gallery located at 300 Carlsbad Village Dr., Ste. 101, Carlsbad, CA from August 3-September 4, 2011. Pat's painting "Casablanca Mosque" was one of 80 paintings out of 613 juried by Cheng-Khee Chee into the 38th Annual Rocky Mountain National Watermedia exhibition to be held at the Foothills Art Center in Golden, Colorado from September 17-November 7, 2011.



Twisting Mountain by Robin Purcell

Robin Purcell's painting "Twisting Mountain" is on Exhibit in San Francisco at the California Historical Society until October 15, 2011. The Exhibition is part of the Centennial Celebration by the California Art Club. Please see Robinpurcellpaints.blogspot.com for more information.

Michael Reardon AWS, NWS, CWA has been accepted into the National Watercolor Society 91st Annual Exhibition. His painting, Lamayuru Chorten, was juried into the show. The show opens October 22, 2011 in the NWS headquarters in San Pedro.

Karen Powers is the featured artist in "Kaleidoscope", the Gallery Concord Fall 2011 Show from September 27-December 23, 2011 Please join us for an evening reception of art, music, wine and light refreshments on September 30, 2011 from 6:00pm-8:00pm at Gallery Concord, 1765 Galindo St., Concord CA. Info at www.galleryconcord.com.



Memories by Karen Powers

Congratulations!

New Master & Signature Members:

MCWA: Myrna Wacknov

CWA: Shelia Cain, Sandra Delehanty, Ric Dentinger, Robert McIntyre, Marilyn Miller, Tom Sallak, Susan Sohl, Marilyn Wear, Gail Zavala, Floy Zittin

Please note that Anne Jacobson, Membership/Data Manager has changed her email to cwa.data@gmail.com.

workshop corner workshops by members and others



Floral Abstract Watercolor Workshop by Ron & Sandy Ridley

Held at the Elk Grove Fine Art Center, 9080 Elk Grove Blvd., Elk Grove, CA 95624 on Oct. 15th, 2011 (Saturday) from 10:00am-1:00pm 916-685-5992. Fee is \$40 per student for class instruction and \$5 for materials. Participants will learn how to use color, shape and movement to create exciting floral compositions. You will experience painting without any rules: no drawing, and no idea of what the painting will develop into. Working intuitively will open your mind to a new creative world. We will drop salt, splash alcohol drops, and scrape flakes of watercolor pencils and crayons into our paintings. Class is limited to 10 students. For more information contact: Elk Grove Fine Art Center at 916-685-5992 or egfinearts@frontiernet.net.

Tony Couch Workshop

December 5-9, 2011, 9:00am-5:00pm
\$565.00

Paint/Golf/Swim Superb Suites
Location-the fabulous
Aliso Creek Inn & Golf Course
31106 South Coast Hwy.
Laguna Beach, CA 92651
\$99/night

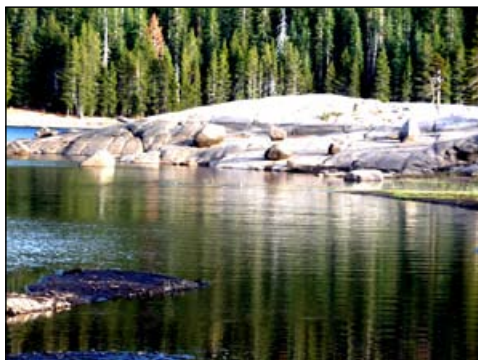
The quaint coastal arts community is home to seven miles of California's most picturesque Pacific coastline. The resort is across the street from the ocean. Dodie Davis 303-589-4495/
Dodie@DodieDavis.com



Tom Jones Plein Air Workshop

Zion National Park, Utah
Dates: September 30-October 6, 2011
Workshop Dates: October 1- October 5, 2011
Price \$1,199 per person

Includes: 6 nights accommodations, 5 day workshop and a private farewell dinner. Airfare is not included. Upgraded accommodations available. \$200 deposit due to hold you space. Final payment due August 1, 2011. Non painting guests are always welcome. For additional details and registration information. Contact Betty at Perfect Destinations: 928-541-1449 (Pacific Time) Email Perfectdestinations@earthlink.net



Lake Alpine Women's Journaling and Painting Retreat

Elaine Frenett and Jean Warren join together to teach the second annual visual art journaling retreat from September 11 - 16, 2011 at Lake Alpine Resort, near Bear Valley, CA. Imagine the Sierras' crisp, clean mountain air inviting us to hike and explore, along with our watercolor journals, the shimmering lake's surroundings where Miwok rocks line the shore. Come play and discover where days are fully packed, yet gently paced and filled with creativity. This is an ideal retreat for spirited women who love words, art, journaling and the energy of other women. For more information: www.visualartjournaling.wordpress.com

Mira M. White

Fall 2011 Teaching Schedule

Acrylics & Oils: Open Studio Workshop

Sept. 13-Nov., 15, Tues. 1:15-4:15

Walnut Creek

Color With Soft Pastels

Session 1: Sept. 13-Nov. 1, Tues. 6:30-9:30pm

Session 2 : Nov. 8- Dec. 13, Tues. 6:30-9:30pm

Oakland

Drawing Class: Explorations

(Drawing with Color)

Sept. 15-Nov. 17, Thurs. 9:00am-12noon

Walnut Creek

Driven To Abstraction (Mixed Media)

Sept. 19-Nov. 28, Mon. 7:00-10:00pm

Lafayette

Figure Drawing/Painting (Beg/Cont)

Session 1: Sept. 17-Nov. 5, Sat. 9:30-12:30 pm

Session 2: Nov. 19-Dec. 17, Sat. 9:30-12:30pm

Oakland

Mix Those Media! (Dry & Wet Color Media)

Sept. 16-Nov. 18, Fri. 9:00-12:00noon

Walnut Creek

Painter's Workshop: Oils

Session 1: Sept. 12-Oct. 31, Mon. 6:30-9:30pm

Session 2: Nov.7- Dec. 12, Mon. 6:30-9:30pm

Oakland

Watercolor: (All levels)

Session 1: Sept. 14-Nov. 2, Wed. 6:30-9:30pm

Session 2: Nov.9-Dec. 14, Wed. 6:30-9:30pm

Oakland

Watercolor: Loosening Up! (Continuing)

Sept. 12-Nov. 21, Mon. 9:30am-12:30pm

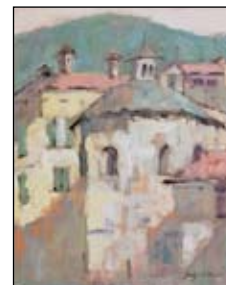
Lafayette

Class Details and Fall 2011 Workshop information at miraMwhite@earthlink.net
www.miraMwhite.com

Georgia Mansur

The Watermill at Posara

A special week-long painting course in watercolors, acrylics and oils. May 26-June 2, 2012. Stay in stylish bedrooms in elegant buildings around the sunlit courtyard. Leisurely breakfasts and mouth-watering meals. Everything is included in the cost of your holiday at the watermill with Georgia: tuition, accommodation, pre-dinner aperitifs, all meals and all local transportation. You get to Pisa, and they do the rest.



Big discounts will be given to those that book before Christmas this year!

Daniel Smith watercolours 'Georgia Mansur Palette' is currently being made in Seattle and will be out soon at stores and online.

There's more about the watermill and the courses at www.watermill.net/painting-holidays or you can get further details from Bill or Lois: info@watermill.net, or at www.georgiamansur.com.

show news

Louisiana Art and Artists' Guild 42nd Annual River Road Show

The deadline for the 42nd Annual River Road Show is approaching. This show is a national juried exhibition sponsored by the Louisiana Art and Artists' Guild with cash prizes of \$3000. Entries are being received until September 16, 2011. Entry fee is \$40 for three entries and \$5 for each additional submission up to 10. All United States artists 18 years and older are invited to submit any original two-dimensional art except photography or digitally-created/enhanced works. The exhibition will be juried and judged by Pam Ingalls, renowned artist and instructor. The actual exhibition will be held December 5, 2011– January 27, 2012 at the Louisiana State Archives building in Baton Rouge, LA.

The Prospectus and pictures of the 2010 are available at www.laag-site.org/River_Road_Show.html.

Direct questions to Gary Drinkwater at 225-485-8884 or laagbr@laag-site.org.



Silent Auction!

Full-size French Style Field

Easel by Jullian.

In slightly used, almost new condition, this wonderful wood easel was donated by Don Harvie to benefit CWA and the 42nd National Exhibition. On display at the general meetings for silent auction bidding. Winner to be announced on September 21, 2011. Enter your (tax-deductible) bid at the general meeting, and keep watch to keep ahead!



Painting Under the Influence?

Thirteen local artists can testify to the joys and progress of creating art under the influence of award-winning artist and teacher Carol Maddox of Pleasanton.

A show of their work and that of their instructor, titled "Under the Influence... Painting with Carol Maddox," will highlight the October 1–31, 2011 exhibit at the Livermore Library. Each artist will present two to three water media paintings, primarily watercolors. In addition, the painters will display their individual—and distinct—interpretations of a single photo of a northern California countryside.

A reception with the artists and their instructor will be held at the library on Sunday, October 2, 2011 from 3:00pm to 5:00pm. Refreshments will be served, and visitors will have a chance to visit with the artists. Many of the artists are professionals

in their own right, and some of their work will be for sale.

Carol Maddox was awarded the Gold Medal of Honor in 2004 at the American Watercolor Society's 137th International Exhibition. Again this year, her entry was granted an award, and the painting is on tour across the United States for one year. A graduate of California College of the Arts, she exhibits regularly with the American Watercolor Society, National Watercolor Society, and California Watercolor Association; she has attained signature membership in all three. Maddox has lived and exhibited in Europe, and returns to conduct workshops in Italy, Belgium, and France.

"My work has moved away from replicating subjects to saying less about a scene—and working more from imagination. I encourage my students to take chances, and explore water media with enthusiasm and freedom," she says. Maddox has been instructing in the Valley for many years. Most of her students have been studying painting with her a long time.

Painters participating in the exhibit will be: Dodie Arterburn, Eileen Butcher, Arline Dust, Marianne Foote, Carol Gerich, Linda Huggins, Jo Ann Koopman, Myra Latkin, Annette Mack, Marisa Ocasio, Ann Peters, Lisa Scarborough, and Gloria Thompson.

"Landscape 610", Carol Maddox, currently on tour with the 2011 American Watercolor Society's Traveling Exhibit.



Photos of Paint Outs, CWA show winners, & Monthly Demos are on www.facebook.com/californiawatercolor

Join Us At The Next Paint Out September 17 at Treasure Island

For details, go to:
www.californiawatercolor.org
on the calendar page.





Alameda Free Library

NEW WORKS* EXHIBIT

October 2 – 29, 2011

1550 Oak Street Alameda, CA 94501 (510) 747-7777

Library Hours: Mon. 12:00pm–8:00pm, Tues. – Thurs. 10:00am – 8:00pm,
Fri. – Sat. 10:00am – 5:00pm, Sun. 1:00pm – 5:00pm

THEME:

New Works* ~ Exhibit will show new works only.

**PAINTING/S
DROP OFF:**

Sunday, October 2nd, 10:00 to 12:00 noon.

JUROR:

David Savellano, CWA

AWARDS:

First Place \$100.00, Second Place \$75.00, Third Place \$50.00 and
Honorable Mention Ribbons.

ENTRIES:

New Works* only. Up to 2 paintings may be submitted. Framed Painting may not be smaller than 16" x 20" or larger than 48" x 50". Original, new* water media on paper (Yupo accepted). No copies or class work. Paintings must be framed in metal or wood, covered with Plexiglas, wired and ready to hang. No saw tooth, clamps or screw eyes. Flat brackets required on wood frames. No cardboard or masking tape. No wide (3+inches) or Rococo frames. White or off-white mats only. Alameda Free Library has determined unsuitable for hanging any nudes or any subject which could be construed as being of a religious or political nature.

LABELS:

Labels can be printed from www.californiawatercolor.org, click forms on the drop down menu. Fill in labels and attach to upper left corner on back of work. Cut below first dotted line and mail with Check to CWA and SASE (self addressed stamped envelope) Lynda Moore 137 Suffield Ave., San Anselmo, CA 94960.

**ENTRY
DEADLINE:**

Postmarked September 25, 2011.

FEES:

\$10.00 members entry fee for each painting.

Reception:

Wednesday October 12th 6:00pm – 8:00pm Wine Served.

INSURANCE:

Your paintings will be handled with the best of care; however, CWA and its volunteers assume no responsibility for theft, loss or damage of any kind. Insurance is the sole responsibility of the artist. A release form is signed with your entry.

SALES:

All sales will be through the artist. There will be no early removals during the show. The artist is responsible to CWA for 25% of sales (15% Outreach and 10% building fund).

CONTACT/S:

Lynda Moore h(415) 454-4027 c(415) 860-7221 CWA, Director of California Exhibits.

END OF SHOW:

Pickup paintings and sign out on Sunday October 30, 2011, 12:00 - 1:00pm.

***New works determined by the artist as recently painted (within last year) and never been exhibited.**

board of directors

president **Bruce Stangeland** 510.526.9075
vice president **Eileen Libby** 510.237.8181
director california exhibits **Lynda Moore** 415.454.4027
director of programs **Pamela Miller** 925.288.9900
secretary **Leslie Wilson** 925.935.7529
budget director **Marilyn Miller** 925.631.6673
director of communications **Samantha McNally** 415.828.4991
directors of workshops **Wendy Oliver** 925.280.1944
Susan Lenoir 925.482.4900
June Hunt 510.525.0965 asst: Alexis Milea
director of outreach **Nan Lovington** 925. 930.6503
asst: FROgard Butler
director of membership **Sue Johnston** 510.531.5471

volunteer committees

national exhibition Eileen Libby
gallery concord co-directors Pablo Villicaña Lara and Carol Jurasin
gallery concord treasurer Gladys Schaible
gallery concord publicity Qian Gao
area representatives Joyce Leopardo*(San Jose)
David Broad (San Rafael)
Sally Cataldo (Santa Rosa)
Carolyn Cappello (Penn Valley)
Gary Foll (Oregon)
James Gleeson (San Francisco)
Donna Gamel (Emeryville)
Georgia Herrick (Modesto)
Alvin Joe (Foster City)
Ara Leites (Santa Cruz)
Carol Maddox (Pleasanton)
David Peterson (Sacramento)
Judy Rowe and Carolyn Warm Sun (Oakland)
Mary Spivey (Berkeley)
Sal Valencia (Pittsburg)
Pablo Villicaña Lara (Concord)
Betty Turnquist (Walnut Creek)
Qian Gao (San Ramon)
Myrna Wacknov (Foster City)
Ron Ridley (Elk Grove)
community outreach Carol Smith, Helene Yu-June Rice,
Mona Rivers-Vasquez, Jack Gautreaux,
Charlotte Huntley
mail distribution Sue Johnston
hospitality Phyllis Annee-Wecker, assistant: position open
greeter Donna Gamel
treasurer assistants Gladys Schaible, Annette Hodtwalker
video library Charlotte Morris*, Cathy Riggs*
photographer Rollando Barrero
panel rental Barb Bochenek*, Pam Howett
cwa webmaster Bruce Stangeland

staff

membership/data manager Anne Jacobson
newsletter editor Patricia Rosa
accountant Kathy Vigil
audio/visual set up Stephen Abst
outreach FROgard Butler
*Chair of Committee

plein air corner



Quinn's Lighthouse Paint-out

It was a beautiful day for a paint out at Quinn's Lighthouse in Oakland. There were eleven CWA painters who attended including: Mary Spivey, Georganne Zaro, Peg Robinson, Alvin Joe, Leslie Wilson, Susan Lenoir, Susan Hilgendorf, Samantha McNally, David Savellano and Lynda Moore. So much to paint; the lighthouse, boats, Victorian houses and much more. The weather was terrific - comfortable temperatures and no wind, and there were lots of passersby who were impressed with our paintings. The September CWA paint-out will be at Treasure Island - go to www.californiawatercolor.org for the schedule and details of our monthly paint-outs. All members welcome!

Thanks, Leslie Wilson

CWA Outreach

Volunteers Needed for the 42nd Show

For September Outreach is in need of volunteers at the Marin Art and Garden Center on the following Fridays: September 16, September 23, September 30 and October 7. We need four volunteers for each Friday, two from 10:00am-12:00 noon and two from 1:00pm-3:00pm. Your job description will be to set up for the art demos during those times.

Please contact outreach@californiawatercolor.org if you are willing to help out. Without you we can not function. Thank you in advance for your generosity of time.



Photos by Cheryl Reynolds

Fourth Annual Beaver Festival

Outreach Activity for August was the Fourth Annual Beaver Festival in Martinez. CWA's Outreach Program was represented by FROgard at the Worth A Dam Booth. It was here that 400 children made colorful Beaver Tails and learned that watercolor paints are not the only water medium - Acrylic paint works well and is bright as it is applied to many surfaces. The children enjoyed wearing their Beaver Tails during the festivities as they learned about the wonderful animals living in the Alhambra Creek - right in their own back yards. Nature is alive and well in Martinez, and so is art!

Position Open! Outreach Program Rep

FROgard will no longer be our Outreach Program Rep in 2012 and CWA is looking for a replacement. There is a stipend of \$1,500 for this job. Please contact outreach at outreach@californiawatercolor.org if you are interested in this paid position. It is fun, rewarding, and keeps you young.



Photo by Walter Crew and Leslie Norgan (EBAG members)

East Bay Artists Guild

On Sunday, August 14, FROgard Butler taught the 20 attendees to the East Bay Artists Guild meeting the difference between a tight and a loose painting. FRO is a local artist, member of EBAG and Outreach Coordinator for the California Watercolor Association. Brushes, watercolor paints, watercolor paper and all required supplies were provided. Hands-on techniques were taught to the other artists through the medium of watercolor. Painting along with FRO, members of the guild and guests learned 8 ways of using watercolor to get different results.

Fun was had by all 20 in attendance - no one was afraid to experiment.

The eight techniques included:

- Graduated Wash
- Salt
- Lifting
- Bubble Wrap
- Sponge
- Splatter
- Dry Brush
- Wet into Wet



Not only was the presentation informative, especially to those artists present that are not painters, but it was also a lot of fun. FRO is a highly energetic and skilled instructor. Even more impressive was the creativity show by the other artists in doing this series of simple exercises.

To Volunteer, contact outreach@californiawatercolor.org

sponsorships

The CWA newsletter is accepting ads from anyone who would like to be a sponsor of CWA. The newsletter is sent out monthly to all of our members. It is a very effective way to reach a large audience of artists. All CWA artists paint with watercolors, but not exclusively. Many members also paint in oils, acrylic and pastels.

We are offering the following sponsor packages that reflect available advertising space. All ads, except Classified, run for a minimum of 3 months and are payable in advance. A 10% discount is available to CWA members, members also get classified ads for free. Deadline for insertion is the 10th of each month prior to publication (ie, February 10 for the March newsletter).

Formats accepted are digital or camera-ready artwork. Images should be scanned at 300 dpi. File format preferred is PDF, but we can accept JPG, TIFF, EPS files. All ads will appear in black and white in the print version, and in color in the email version.

Contact Patricia Rosa at newsletter@californiawatercolor.org or (925) 672-3052 for further information.

sponsor levels

Distinguished Donor

Full Page/7.5 x 10
3 months: \$750
12 months: \$3000

Benefactor

Half Page/7.5 x 5
3 months: \$450
12 months: \$1800

Fellowship

Third Page/7.5 x 3.25
3 months: \$360
12 months: \$1440

Patron

Quarter Page/3.75 x 5 (vert)
3 months: \$240
12 months: \$960

Friend

Eighth Page/3.75 x 2.5 (hrz)
3 months: \$180
12 months: \$720

Classified

text only: approximately 400 characters, including spaces. \$50/month (free to CWA members and non-profit organizations)



42nd National Exhibition Committee Update

El Mercado by Erich Fisher

It's a great pleasure to announce that the catalog for the CWA 42nd National Exhibition has gone to press, and will soon be delivered to each entrant and every member. There were a number of drafts, several revisions, and many eyes upon all the pages to find the inevitable errors and make corrections. Special appreciation goes to Graphics Designer Patricia Rosa in her first catalog for CWA, and to Patrick Hyde and his staff at Hyde Printing, whose professional guidance in the process was fundamental to its success. When you get your copy, enjoy seeing the images and prize-winners chosen by the juror, and then make plans to come in person between September 8 and October 9. There is nothing like the real paintings!

We continue to appreciate the MSA members who have come forward help make this a fabulous artistic event. Some of them are Marcia Higgins, MSA Board President with her email alerts, and Mary Anne Hanretty for her traditional flower arrangement, plus Catherine Moreno, who has offered her public relations expertise for 42nd Exhibition promotion. An exceptional appreciation goes to Judy Samborski and Marcia Kent, who generously have offered their to coordinate and install the artwork to its best advantage.

Mark your calendar and sign up for the Plein Air Paint-Out on Saturday, October 1st, once again managed by David Savellano and Karen Mills. The Marin Art and Garden Center is a favored destination for classes and artists to record their version of the lawns, buildings, and water features on this beautiful, secluded, expanse. Details are in the prospectus included with this newsletter and on our website. Volunteers are still needed for this event:

Artists and Awards Reception September 18: set-up, servers, bar tenders, clean-up.
Contact Susan Hilgendorf at hilgenc@juno.com.

Outreach Fridays: September 16, 23, 30, and Oct 7 for Morning and Afternoon session assistance. Contact FROgard Butler at frogard2000@yahoo.com

Hope to see you on September 18, 1:00PM TO 4:00pm for the Artists and Awards Reception. There will be no 42nd National committee meeting in September.

*Eileen Libby, Director 42nd National Exhibition
California Watercolor Association*



Saturday, October 1, 2011

10am to 3pm

Marin Art and Garden Center (MAGC)
at the Marin Society of Artists Gallery
30 Sir Francis Drake Blvd. in Ross, CA.

CWA 42nd National Exhibition

Plein Air Paint Out at MAGC

Open to all artists working in any medium (non- CWA artists are invited to participate)

Sponsored by the California Watercolor Association

\$15 Pre-registration by Credit card payment through Paypal up to 09/26/11, Monday:
Go to www.californiawatercolor.org and click online registration on the Exhibition Calendar.

\$15 On-site registration by check payment at MAGC on Saturday 10/1/11 between 9:00am to 10:00am

A Combination of CASH and MERCHANDISE PRIZES

First Place.....	\$100.00 value
Second Place.....	\$75.00 value
Third Place.....	\$50.00 value
People's Choice Award.....	\$75.00 value

Rules:

9:00am to 10:00am – REGISTRATION (canvas, paper, etc. will be registered prior to painting)

Pre-registered participants go to the registration table at the Marin Society of Artists Gallery to register your paper or canvas and receive your packet.

Participants who register on 10/1/11, the day of the event, go to the registration table at the Marin Society of Artists Gallery to pay fees, register your paper or canvas and receive a on-site packet.

10:00am to 2:00pm – PAINT

Select a subject and paint any scene visible from the grounds of MAGC using any style or medium.

2:00pm to 2:15pm – DISPLAY in the tented area near the Marin Society of Artists Gallery.

Each artist may exhibit one completed work in the display area. Do not mat or frame work until after the judging is completed. Work may be displayed on an easel or stand.

2:15pm to 2:30pm – VOTE

Participants will vote for 1st, 2nd, 3rd place awards using the ballot provided. You cannot vote for yourself.

The "People's Choice Award" will be decided by the viewing public

3:00pm – AWARDS PRESENTATION

3:00pm to 4:00pm – EXHIBIT THE WORKS



CALIFORNIA
WATERCOLOR
ASSOCIATION Box 4631 • Walnut Creek, CA 94596-0631

Nonprofit Org.
U.S. Postage
PAID
Concord, CA
Permit No. 720

Return Service Requested

2011 Calendar

MEETINGS & DEMOS

September 21 Cheng-Khee Chee
October 19 Kathleen Conover
November 16 Barry Levin
December 3 Holiday Party
at Gallery Concord 1pm-3pm

WORKSHOPS

September 19 - 23 Cheng-Khee Chee
October 17 - 21 Kathleen Conover

MEMBER SHOWS

October 2 - 29 Alameda Public Library
Watch this space for more shows to be added.

42ND NATIONAL SHOW

September 8 - October 9, 2011
Plein Air Paint Out October 1, 2011

CWA PLEIN AIR PAINT OUTS

10 am to 1 pm.
September 17 Treasure Island
October 15 Viansa Winery
November 19 China Camp
See www.californiawatercolor.org for details.

HELP WANTED

Budget Director:

Open in September 2011

President:

Open in 2012

Vice President/National Director:

Open in 2012

Director of Programs:

Open in 2012

Director of Outreach:

Open in 2012

Outreach Assistant (stipend of \$1,500):

Open in 2012

Plan ahead! Submissions for the newsletter must be received by the 15th of the month
prior to publication! Send to Patricia Rosa (see page 2).