



# Community Outreach — Oakland Veterans

## Experimenting with Edge and Flat Stamping à la Bud Shackleford



Diana's Japanese Temple



Matboard and cardboard tools



Stamps on sample test paper



This month's gathering was a blast! Instead of just paint brushes, we made marks using sponges, edges of 300 lb. watercolor paper, corrugated cardboard, a credit card, bubble wrap, and any manner of items that many would consider rubbish. We brushed thick paint onto a tool, then pressed it onto the paper.

To begin everyone worked on a test sheet. Seeing what shapes and effects we could achieve and liked. The edge marks were very clear and decisive, but could be blurred by stamping onto wet paper and shifting or scraping with the tool. Then we transitioned to a quarter-sheet watercolor paper and drew the composition we wanted from the source featuring cactus, a hacienda and mountains. With that agreed upon, we all relaxed.

It was a very engaging process and hard to stop playing around. Just one participant almost finished her piece. She knew that she wouldn't be at the next session. She did an original twist to the subject matter. The cactus became pine trees and the hacienda became a Japanese temple. It had a whole different feel. We all enjoyed this session and the new possibilities it opened up to us. I don't think that we'll be abandoning our brushes anytime soon, but the combination is intriguing. We left the group feeling lighthearted.

*Sheila Cain*

Co-Director, Community Outreach

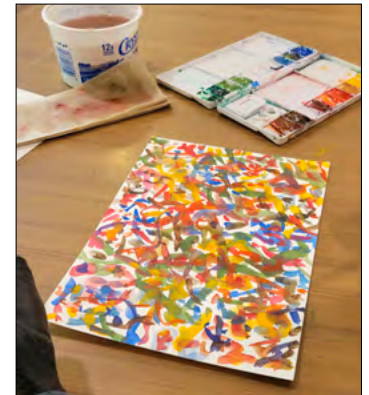
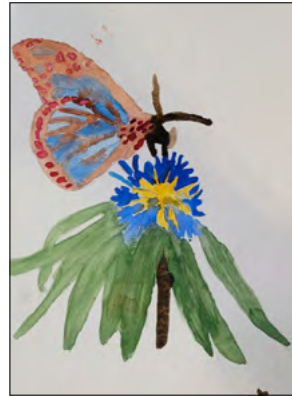


# Community Outreach — Martinez VA

## Painting from the Heart

The painters at the VA in Martinez are enjoying interpreting pencil sketches in watercolor, which is resulting in more focus and creativity. One painter created a piece reminiscent of Jackson Pollock.

*Maggie Metcalf &  
Darlyn Phillips*  
Community Outreach



**Call Maggie at  
(925) 899-9185  
to join us!**

## Signature Membership Status — How to Apply

To apply for Signature Membership, an associate member must submit a petition to the Board through the Membership Director via the **Contact Us** page. This petition should include a letter detailing participation in CWA activities and must be accompanied by copies of the "Service Hours Record," along with show flyers or acceptance notices if necessary. The applicant is responsible for providing documentation, and acceptance is subject to Board approval.

### Signature Membership (CWA)

To qualify for Signature Membership, an applicant must fulfill the following requirements:

- Be a member in good standing.
- Have acceptance into three CWA National/ International Exhibitions; OR
- Have acceptance into two CWA National/ International Exhibitions and completed a minimum of 60 volunteer hours.

For each service performed, a "Service Hours Record" should be filled out by the volunteer and signed by the individual overseeing the activity. This record documents the service provided.

- 60 Hours Per Year of Service: Board Members, Webmaster
- 30 Hours Per Year of Service: Hospitality Chair, Video Chair
- 10 Hours Per Year of Service: Show Chair

### Master Signature Membership (MCWA)

To qualify for Master Signature Membership, an applicant must fulfill the following requirements:

- Achieve acceptance in three CWA National/ International Exhibitions after acquiring initial Signature Membership.
- Petition the Membership Director using the **Contact Us** page, selecting "Membership Director" from the drop-down menu, and providing proof of acceptances in the form of show flyers, acceptance notices, or show catalog pages.

Signature members may use the initials "CWA" or "MCWA" after their signature on water-based media work if they desire. However, no member may use these initials until their petition has been granted by the Board. The use of these initials is contingent on continued membership with CWA.